

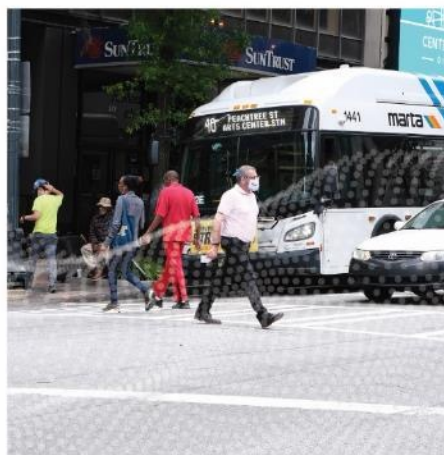


August 31, 2022

ATLANTA REGIONAL COMMISSION

Regional Safety Strategy

In Association with:



Agenda

- Executive Summary
- Economic Analysis
- Equity in Safety
- Evolution of Safety

2022 Atlanta Regional Commission

REGIONAL SAFETY STRATEGY

The roadway is a shared space, safety is a shared responsibility



Economic Analysis

Average Crash Costs by Severity

Severity	Crash Cost
K: fatal	\$16,374,467
A: suspected serious injury	\$988,918
B: suspected minor injury	\$326,938
C: possible injury	\$184,435
O: property damage only	\$18,816
KA: severe injury	\$3,600,900
KABC: all injury combined	\$393,287
KABCO: total crashes	\$117,559

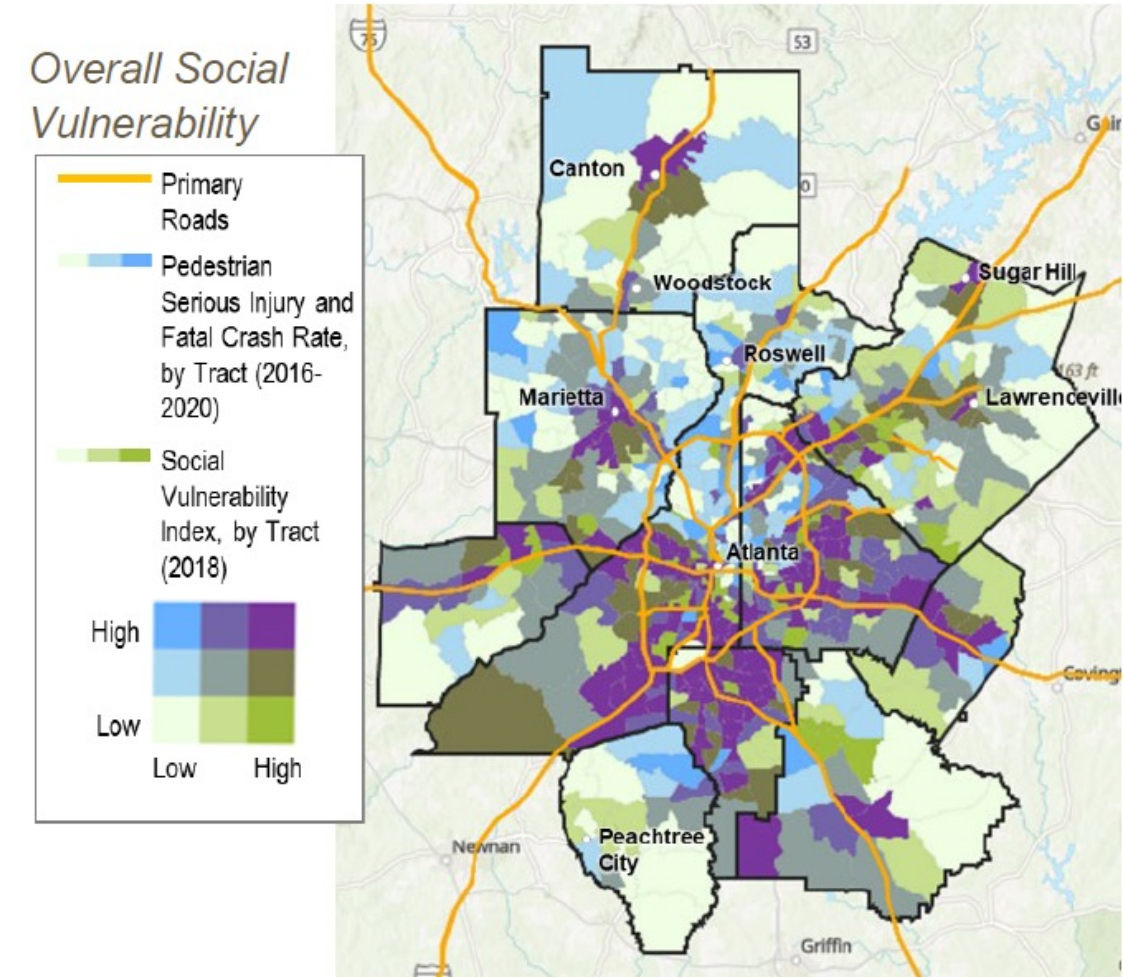
- Useful for:
 - Estimating regional economic impacts from crashes
 - Selecting preferred countermeasure(s)
 - Prioritizing projects within a program



Equity in Safety

- Deaths and serious injuries are not equitable across the region
- Low-income, minority, young, disabled, and elderly residents are disproportionately impacted
- Incorporated SVI work from GOHS

Figure 4. Bivariate Map of Serious Injury and Fatal Pedestrian Crash Rates (per 100,000 census tract population) and Social Vulnerability Index in the Atlanta Region, by Overall SVI and SVI Themes



Georgia Crash Outcomes Data Evaluation System. (2022, July). Examining Social Vulnerability and the Association with Pedestrian Crashes: 2016-2020 data. (Georgia Traffic Safety Facts). Atlanta, GA: Governor's Office of Highway Safety.

Evolution of Safety

To advance safety in the Region:

- Adopt a Safe System approach
- Focus on fatal and serious injury crashes
- Employ a proactive, data-informed approach
- Identify locations with highest potential for safety improvement
- Implement proven safety countermeasures
- Foster culture of collaboration and inclusion



A comprehensive,
data-informed
approach.



Steady incremental
investments guided
by Safe System
principles.

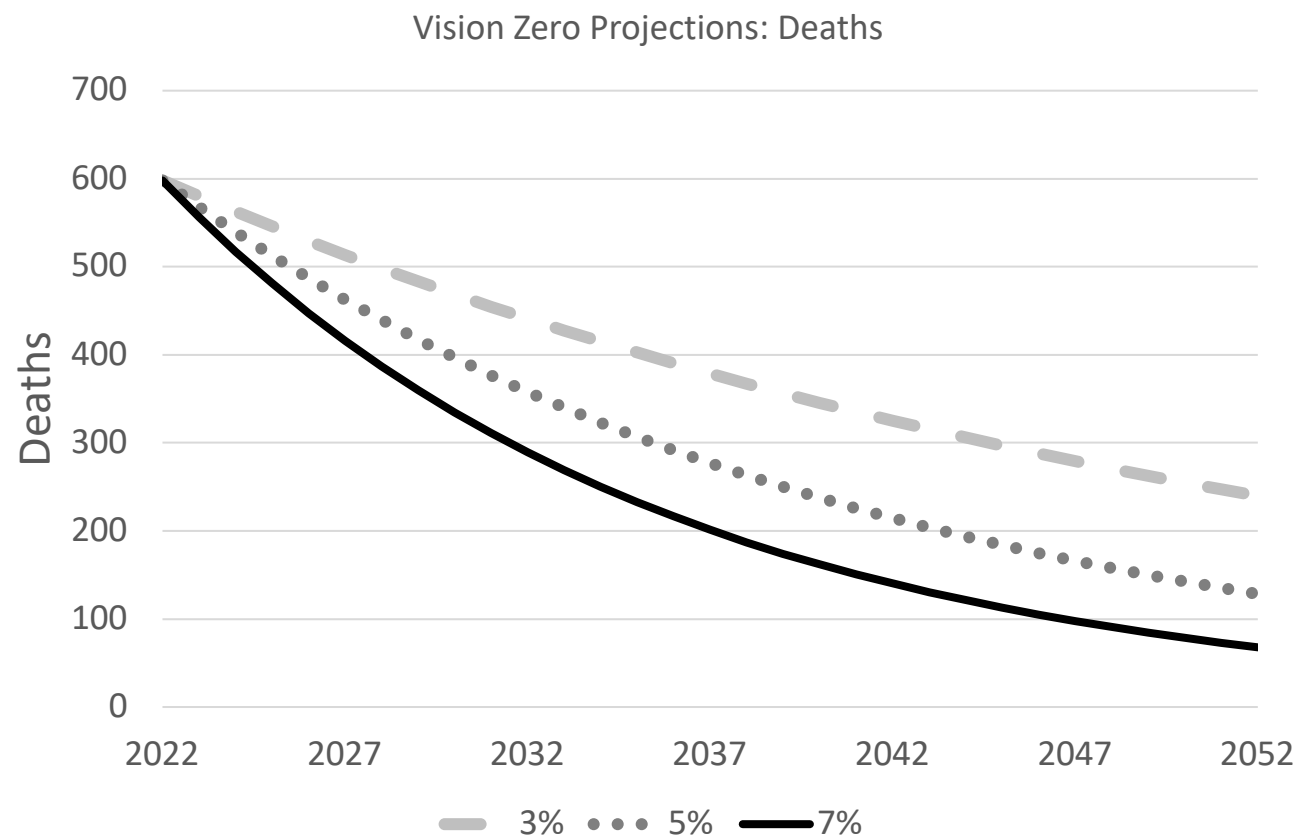


Targeted and
coordinated efforts
from all safety
stakeholders
throughout the
region.

Evolution of Safety

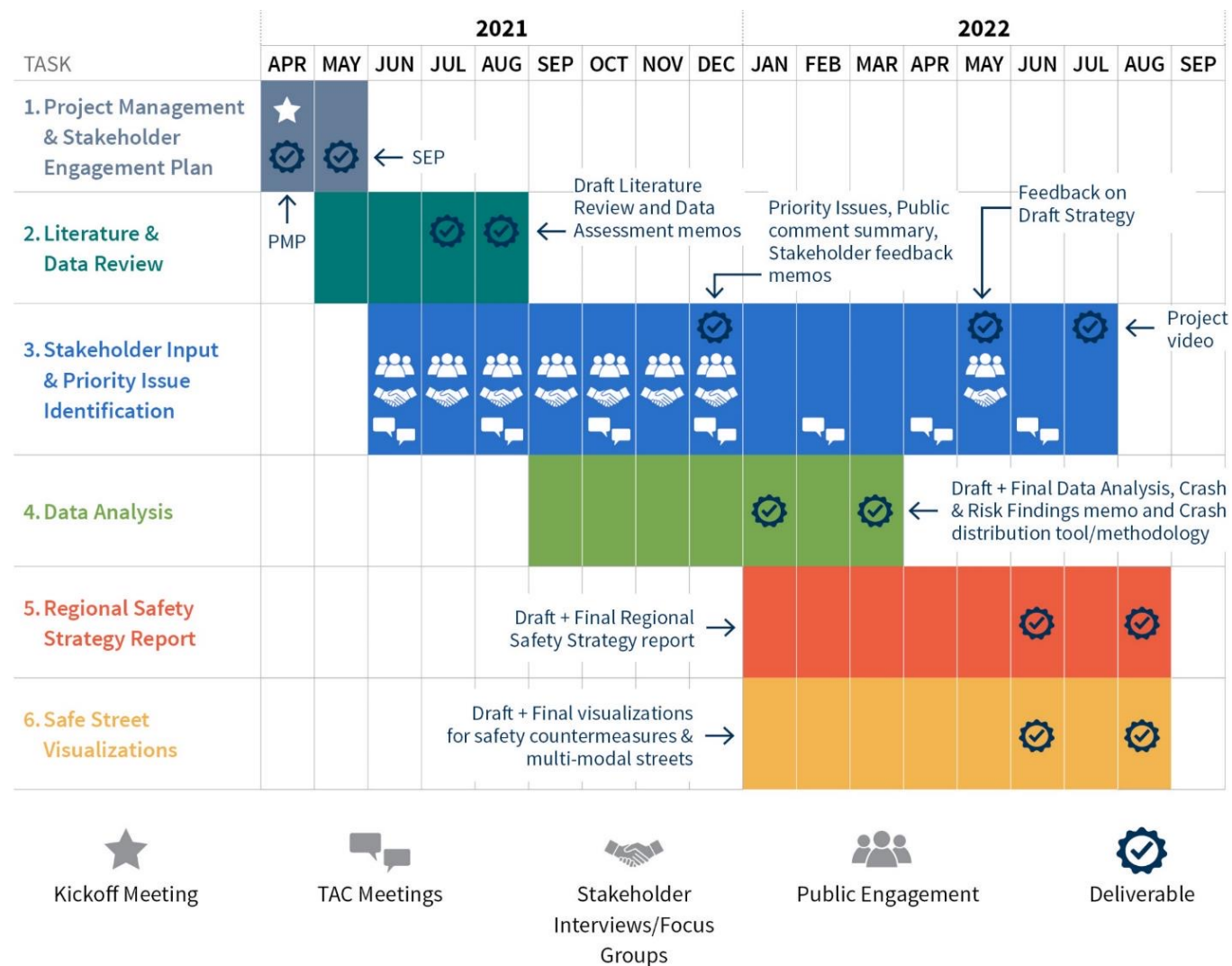
To advance the RSS:

- Use RSS to inform plans and programs
- Improve funding flexibility
- Enhance safety data capabilities
- Enhance safety analysis capabilities
- Solicit stakeholder feedback
- Update RSS

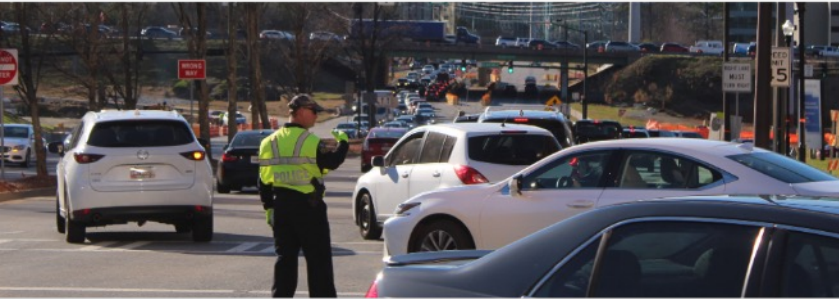
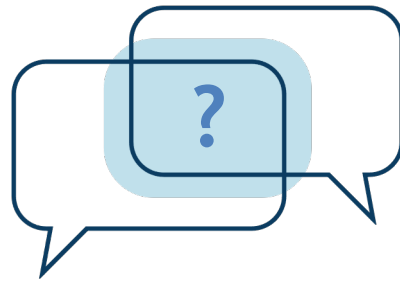


Schedule

- Draft Revisions and Layout (by 9/9)
- Stakeholder Review (9/12 – 9/23)
- Joint Board Meeting (9/14)
- Final Revisions (9/26 – 10/7)



Questions



Byron Rushing

RSS Project Manager

Atlanta Regional Commission

470-378-1628

brushing@atlantaregional.org

Tejas Kotak

RSS Deputy Project Manager

Atlanta Regional Commission

470-378-1560

Tkotak@atlantaregional.org