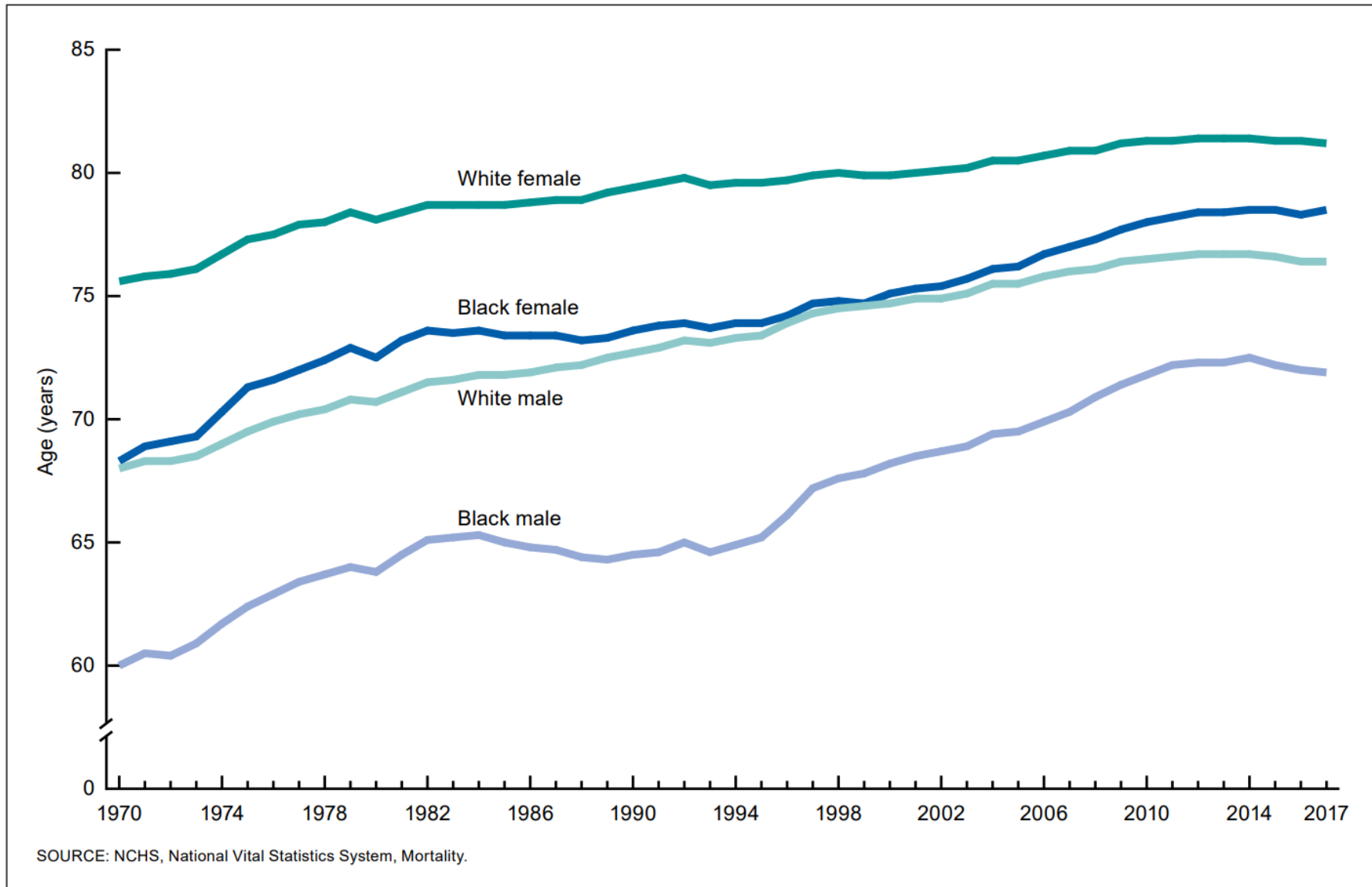


# Live Beyond Expectations

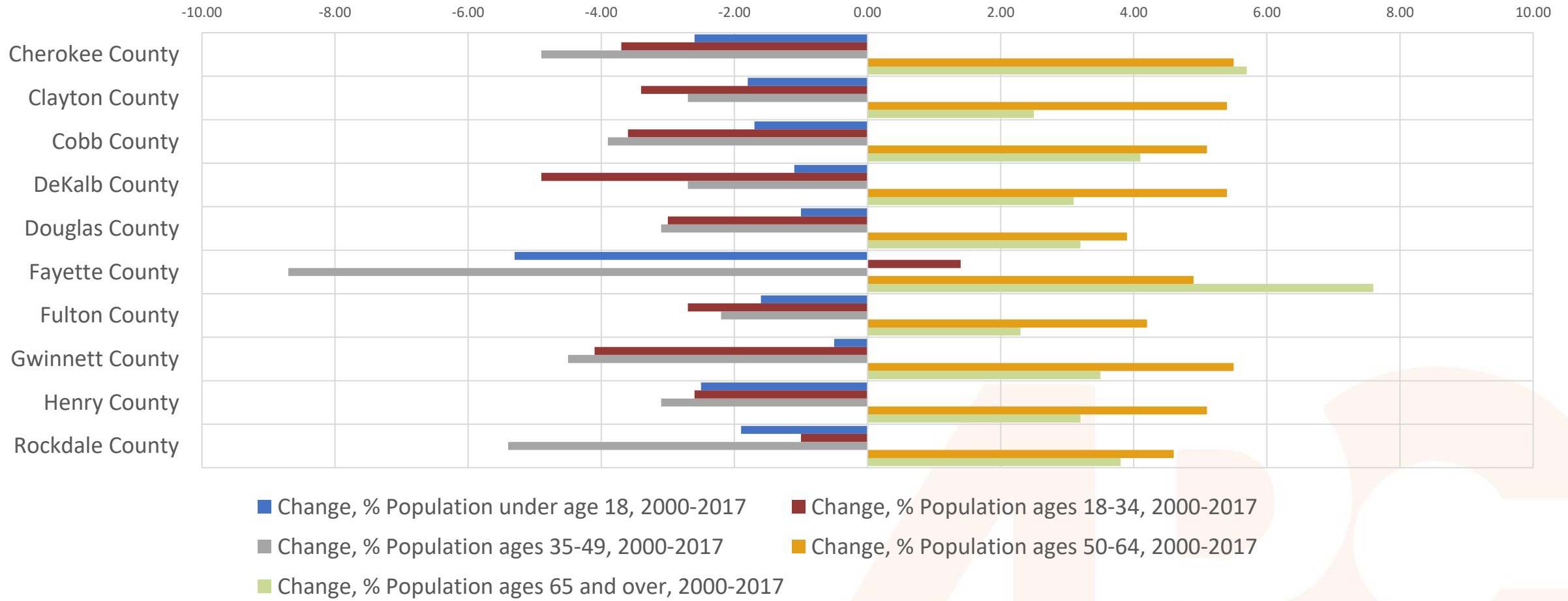
## 2020-2025



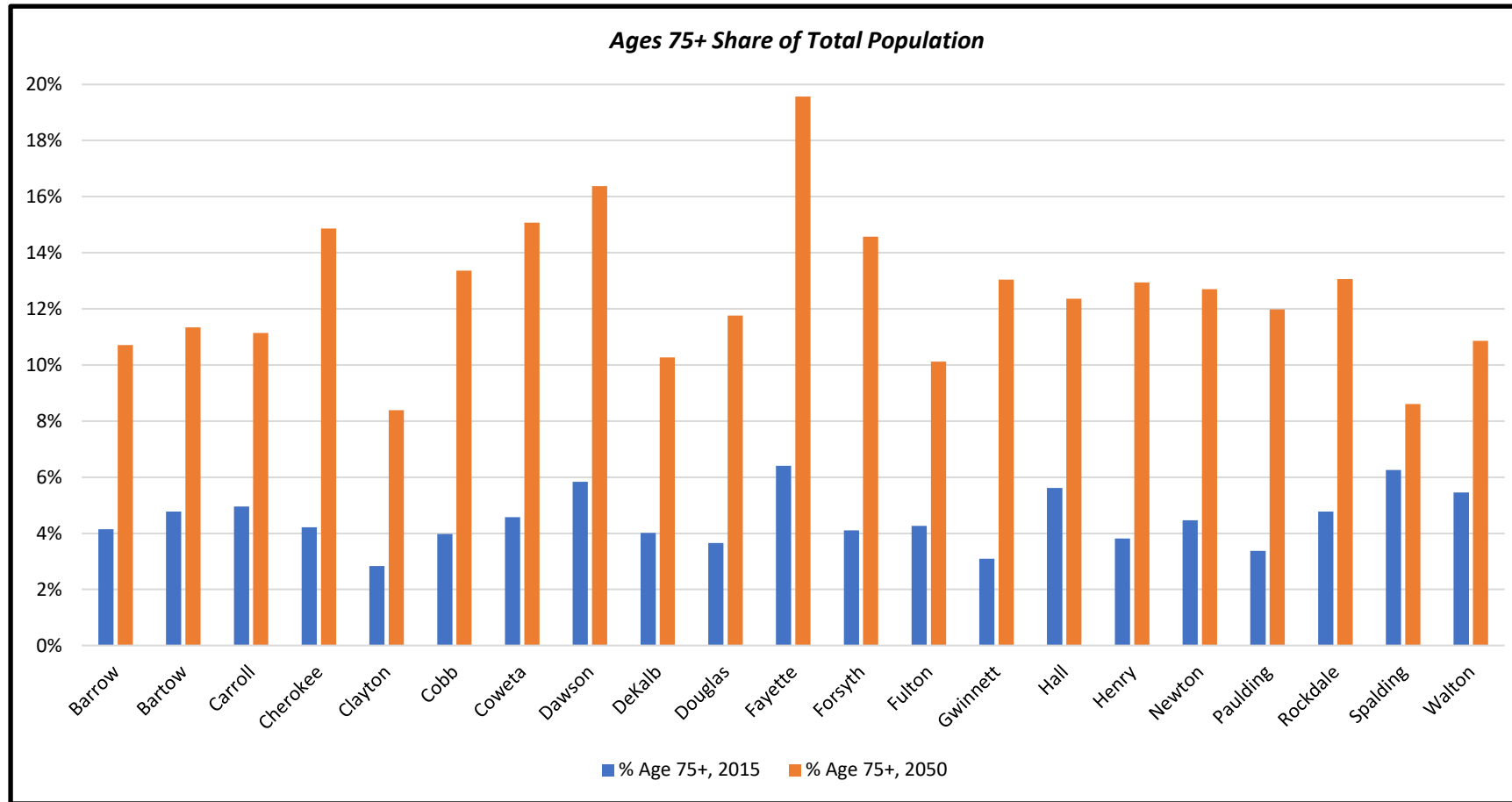
**Figure 1. Life expectancy at birth, by race and sex: United States, 1970–2017**

# Metro Atlanta Aging: By County

Change in the Share of Population by Age, 2000-2017



## Age Trends 2019 to 2050: Ages 75+



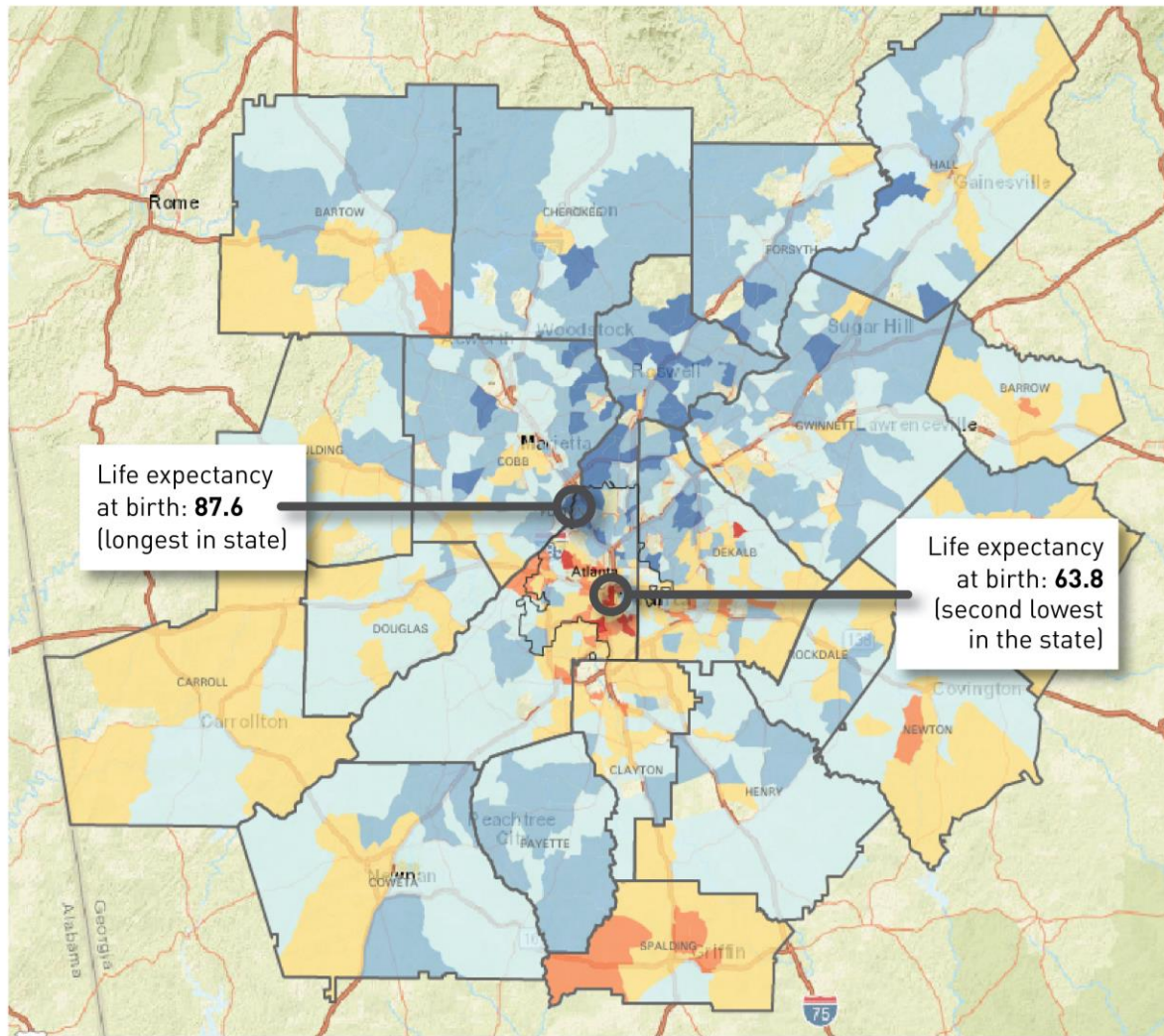
This chart shows how the share of the 75+ age cohort in each county is forecast to change, with all counties forecast to experience substantial increase in the share of this age cohort by 2050.



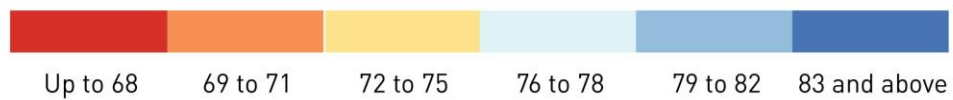


The future of  
metro  
Atlanta . . .

. . . Is aging!



**Life Expectancy at Birth**



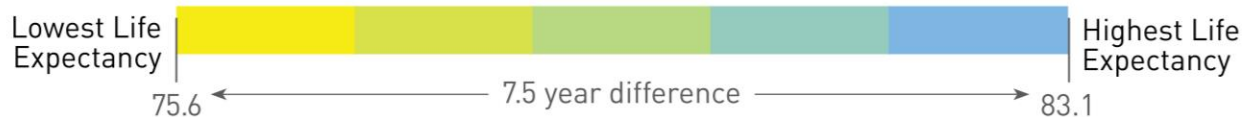
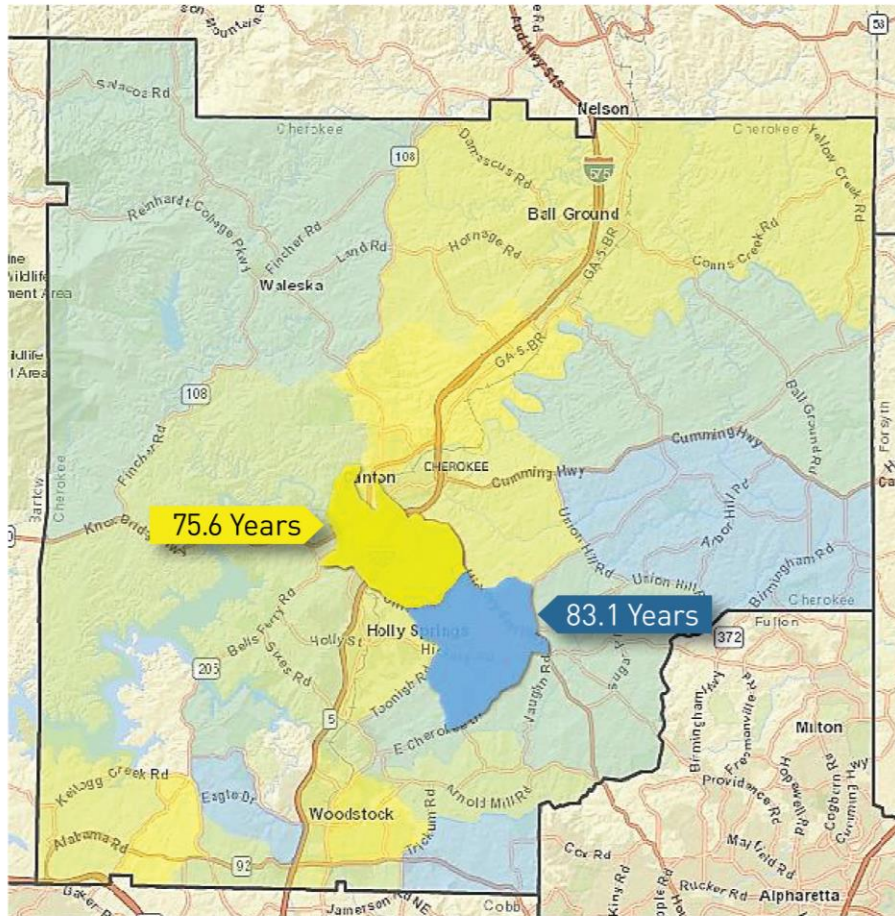
Source: U.S. Small-area Life Expectancy Estimates Project, 2010-2015

# ARC Regional Life Expectancy

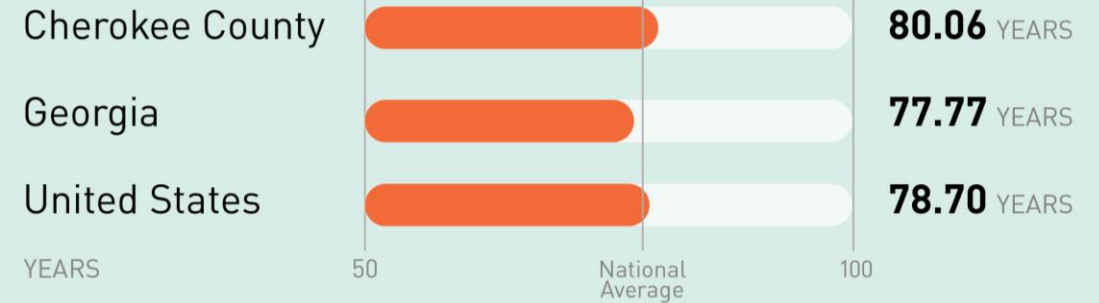




# Cherokee County



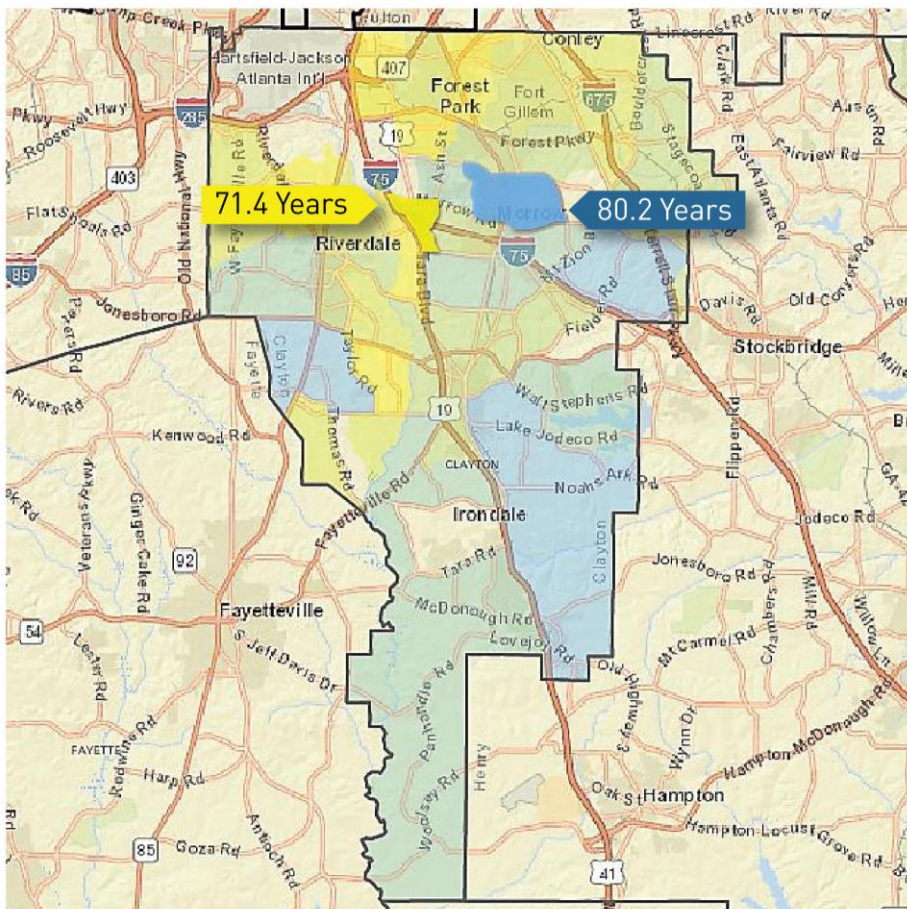
## Average Life Expectancy Comparison



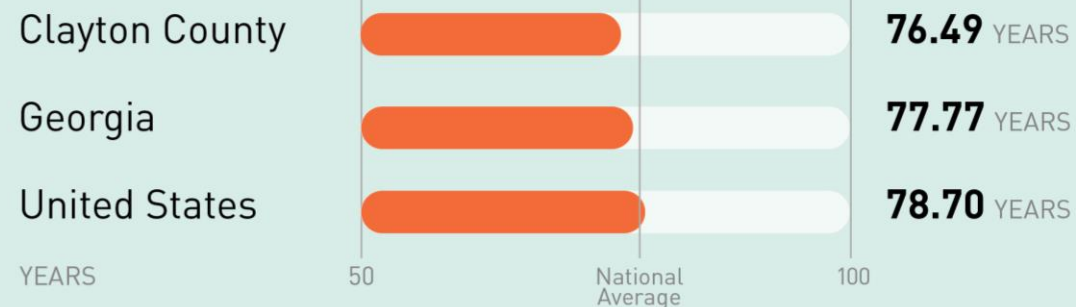
Sources: U.S. Small-area Life Expectancy Estimates Project, 2010-2015

Life Expectancy Bar Charts: Robert Wood Johnson Foundation Life Expectancy Tool, January 2020

# Clayton County

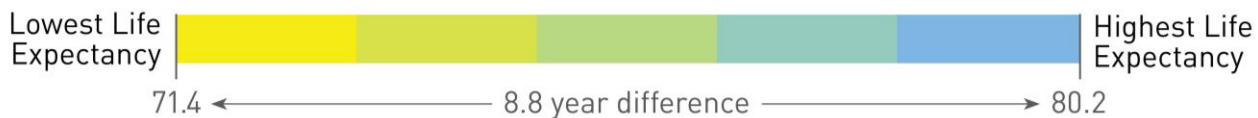


## Average Life Expectancy Comparison



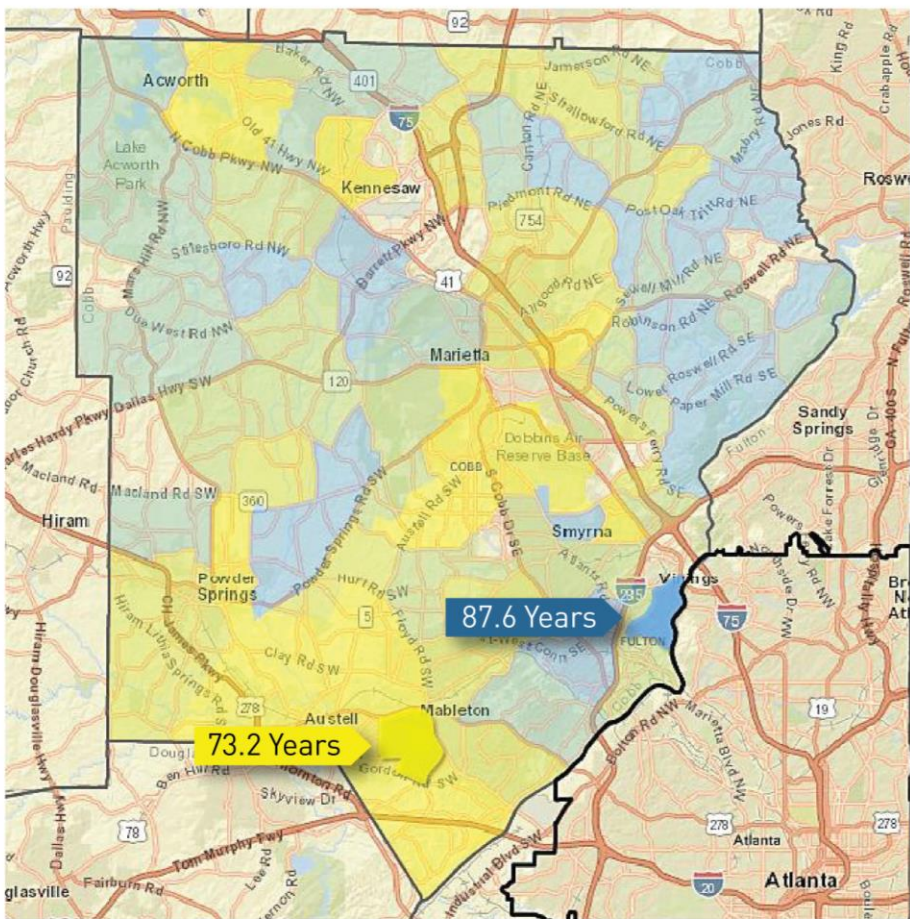
Sources: U.S. Small-area Life Expectancy Estimates Project, 2010-2015

Life Expectancy Bar Charts: Robert Wood Johnson Foundation Life Expectancy Tool, January 2020

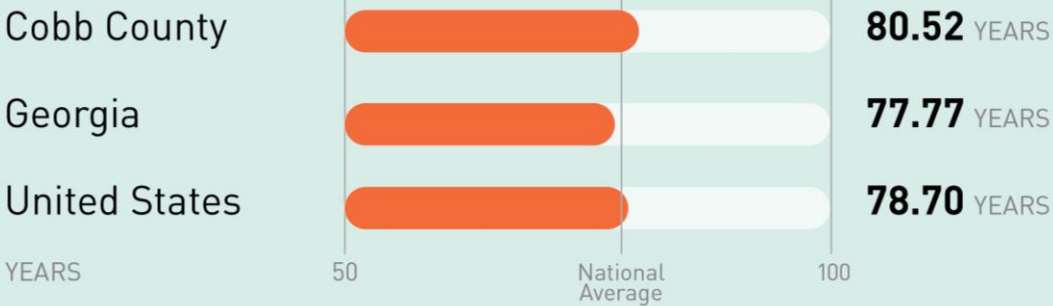




# Cobb County



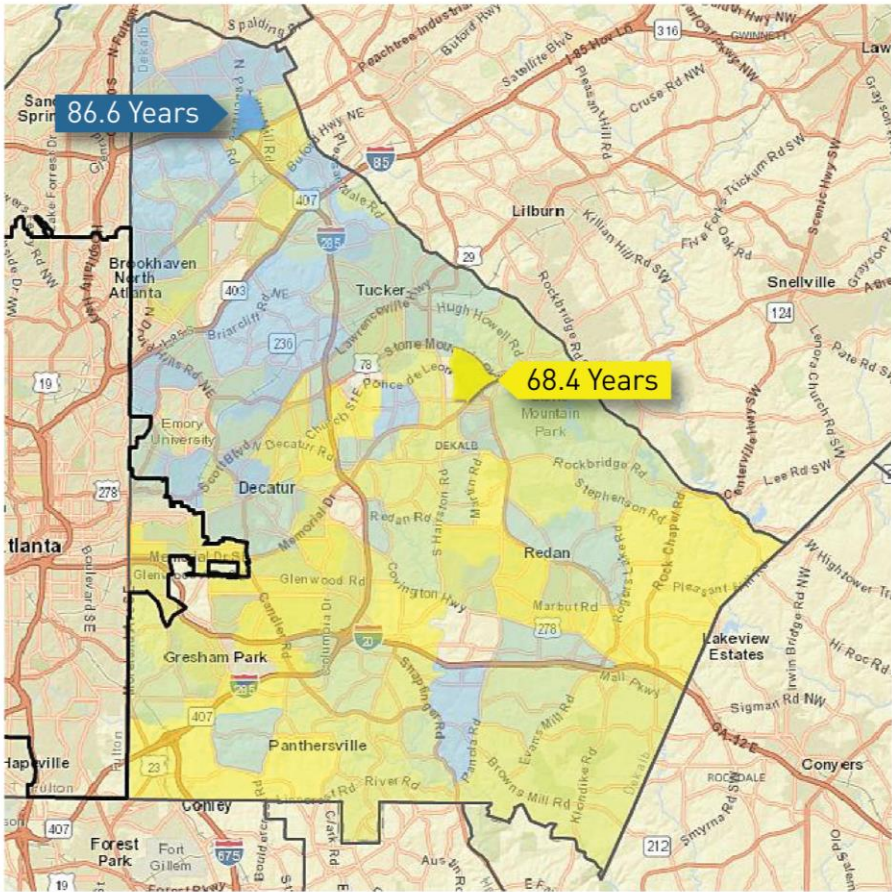
## Average Life Expectancy Comparison



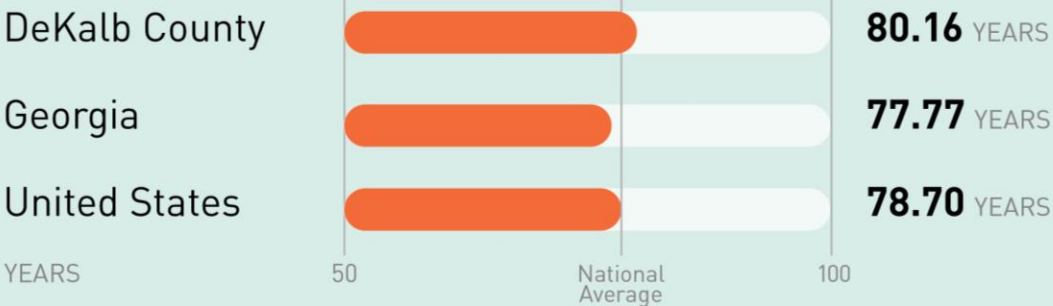
Sources: U.S. Small-area Life Expectancy Estimates Project, 2010-2015

Life Expectancy Bar Charts: Robert Wood Johnson Foundation Life Expectancy Tool, January 2020

# DeKalb County



## Average Life Expectancy Comparison



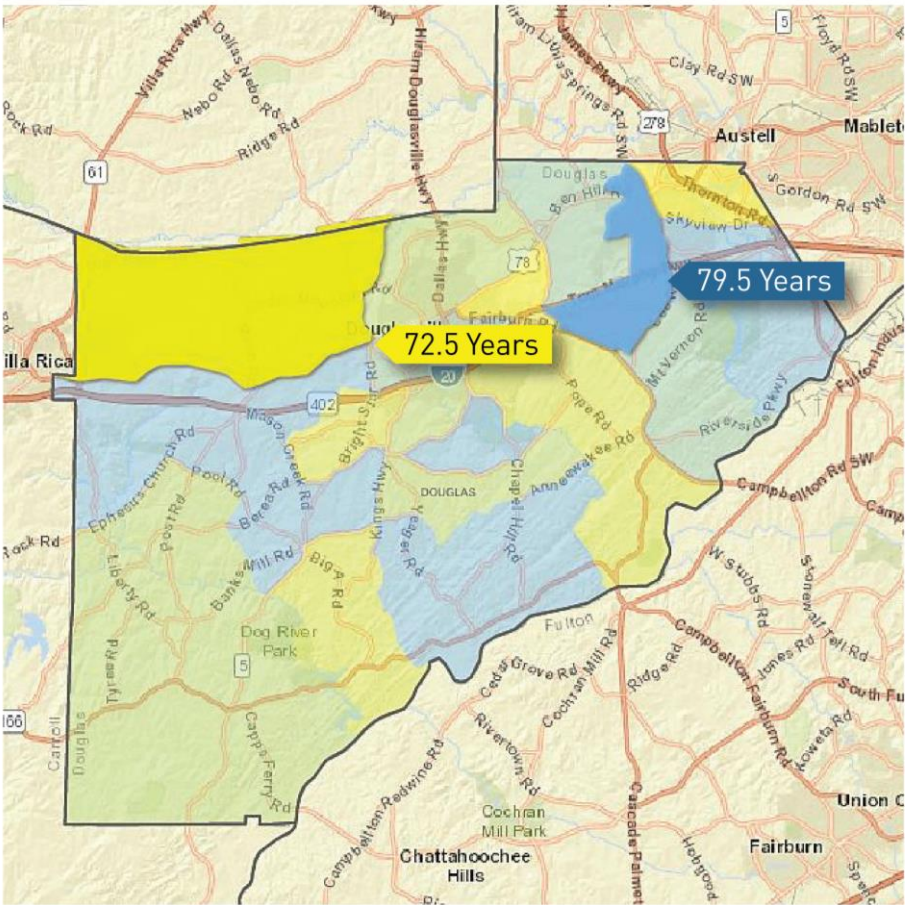
Sources: U.S. Small-area Life Expectancy Estimates Project, 2010-2015

Life Expectancy Bar Charts: Robert Wood Johnson Foundation Life Expectancy Tool, January 2020

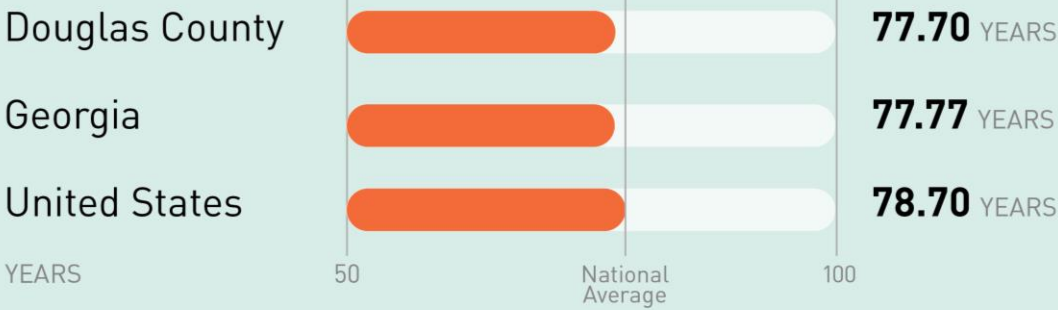




# Douglas County



## Average Life Expectancy Comparison



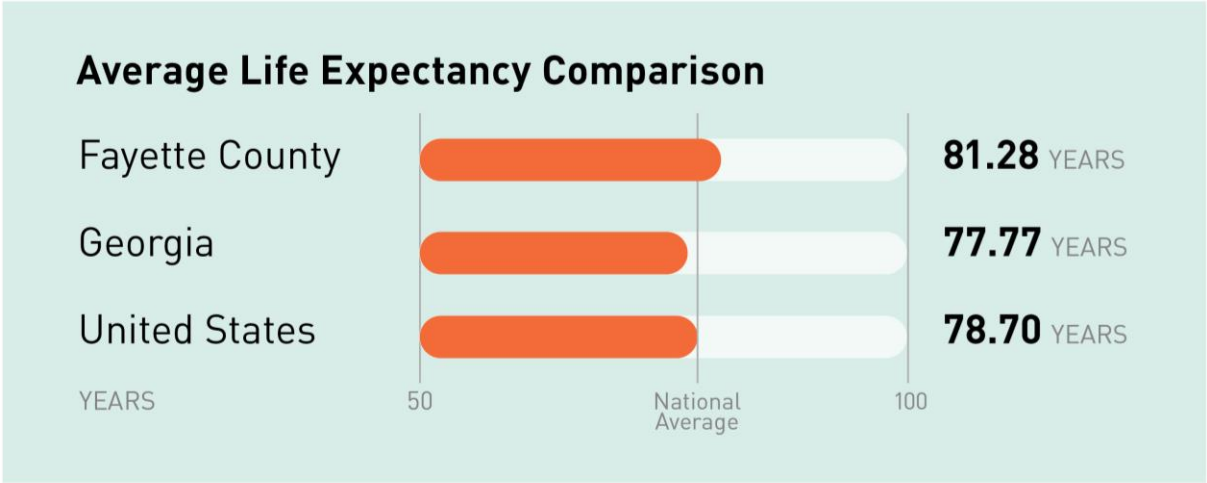
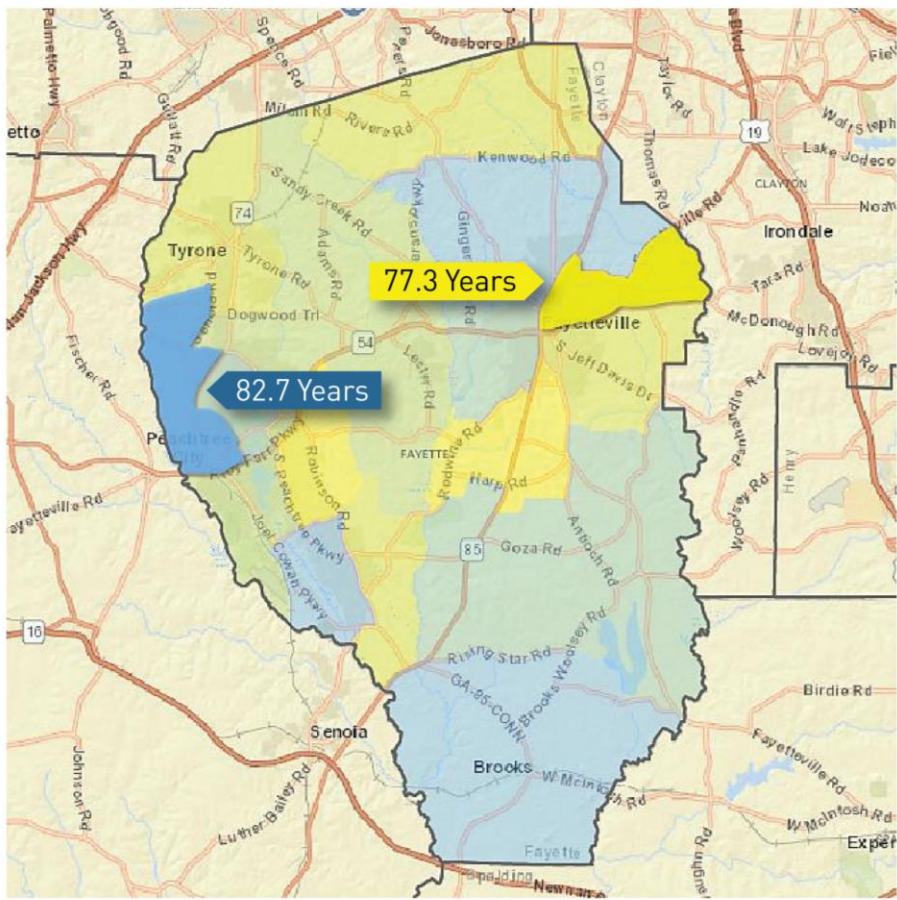
Sources: U.S. Small-area Life Expectancy Estimates Project, 2010-2015

Life Expectancy Bar Charts: Robert Wood Johnson Foundation Life Expectancy Tool, January 2020





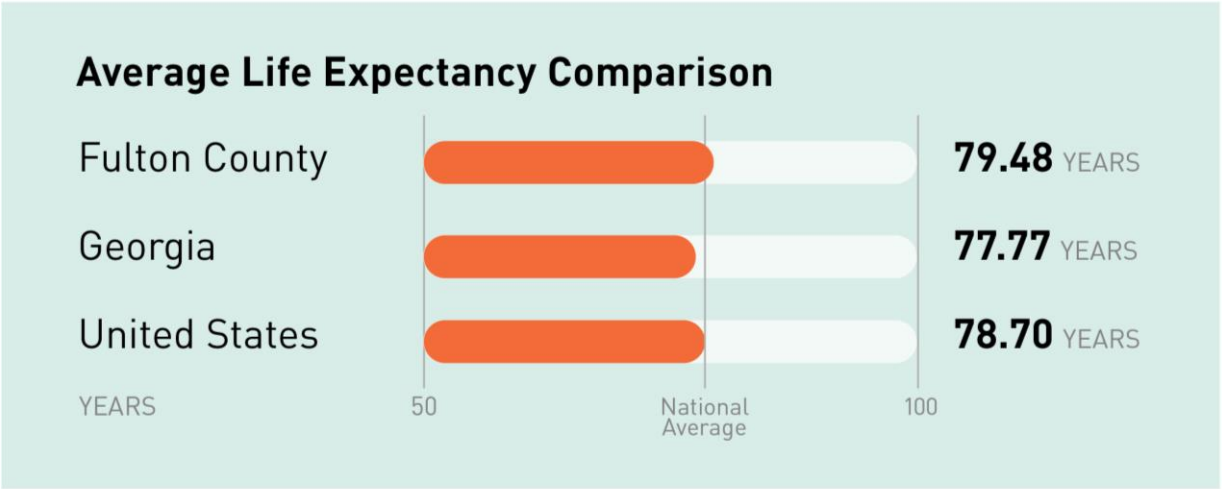
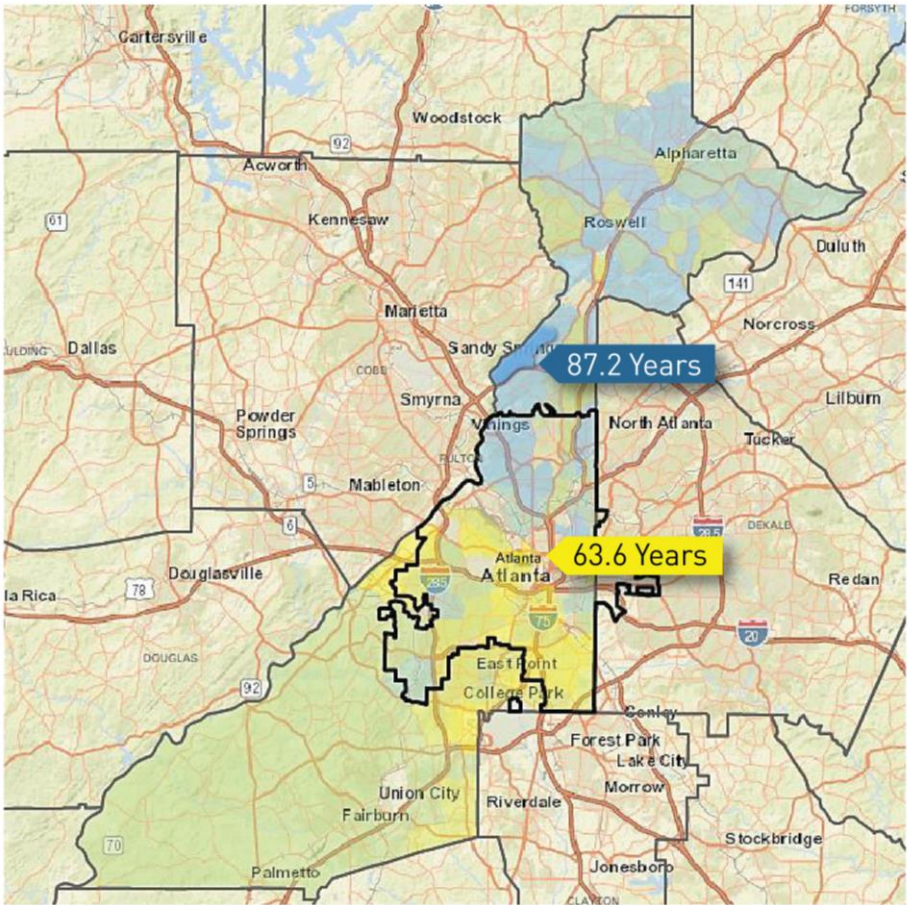
# Fayette County



Sources: U.S. Small-area Life Expectancy Estimates Project, 2010-2015  
Life Expectancy Bar Charts: Robert Wood Johnson Foundation Life Expectancy Tool, January 2020



# Fulton County

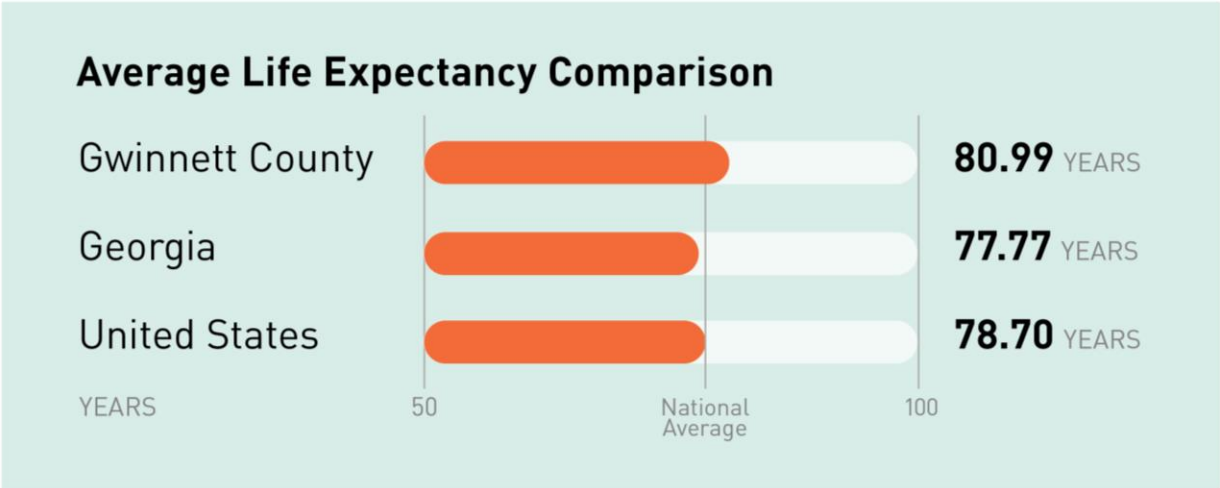
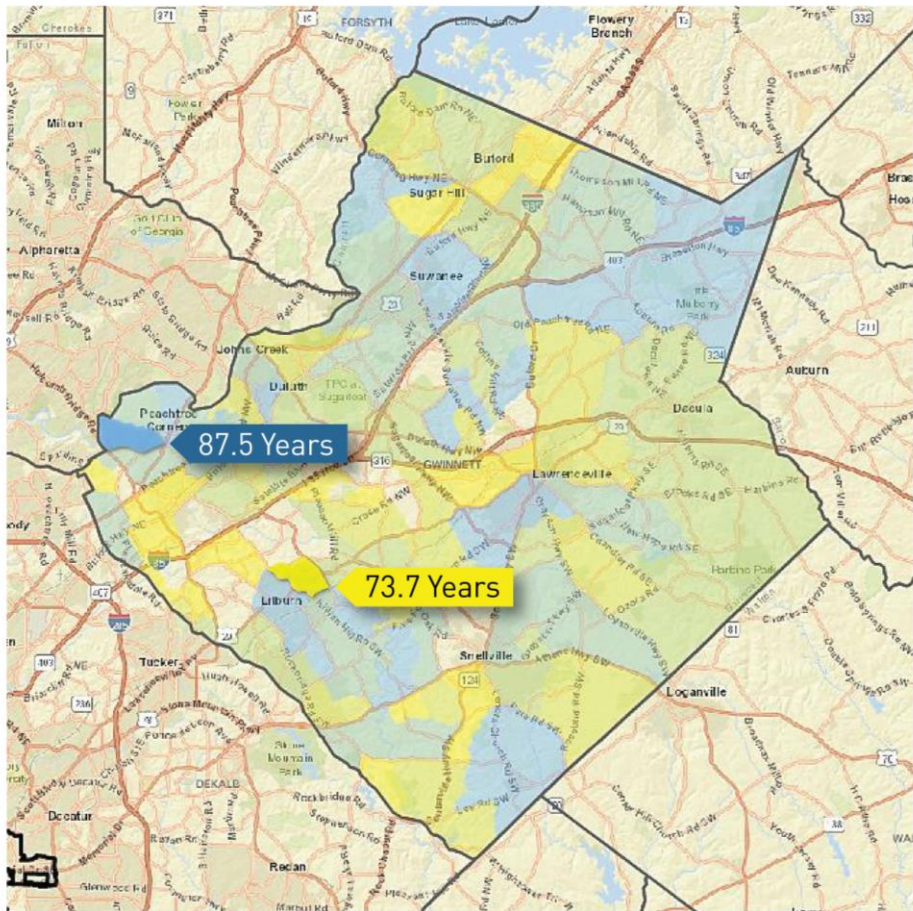


Sources: U.S. Small-area Life Expectancy Estimates Project, 2010-2015  
Life Expectancy Bar Charts: Robert Wood Johnson Foundation Life Expectancy Tool, January 2020





# Gwinnett County

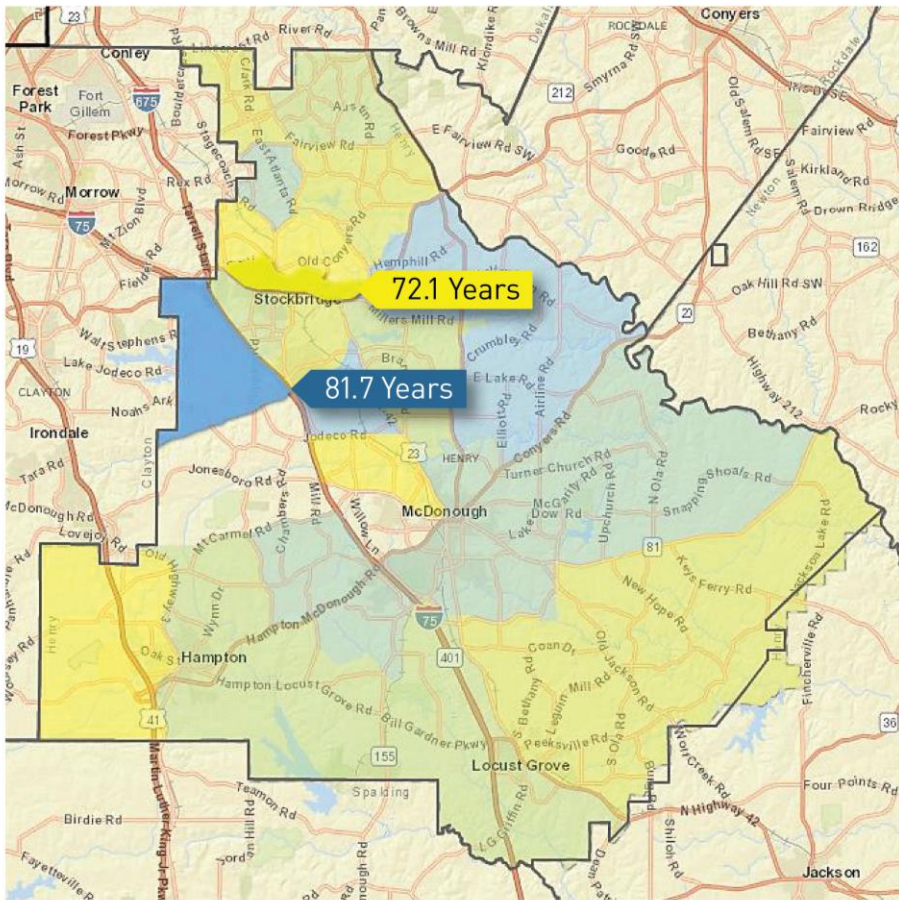


Sources: U.S. Small-area Life Expectancy Estimates Project, 2010-2015  
Life Expectancy Bar Charts: Robert Wood Johnson Foundation Life Expectancy Tool, January 2020

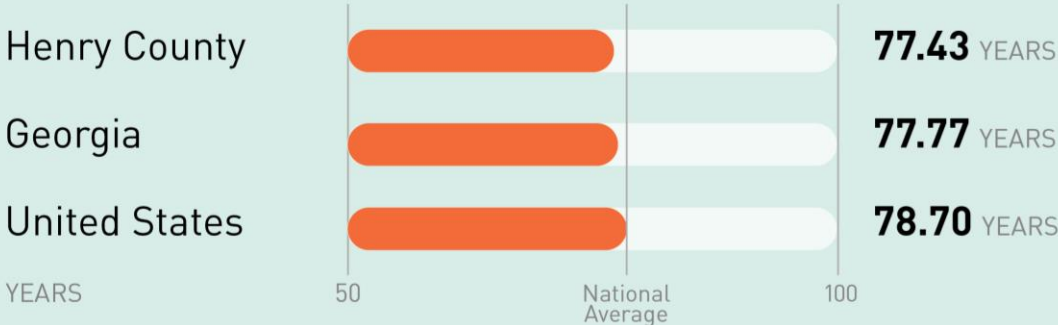




# Henry County



## Average Life Expectancy Comparison

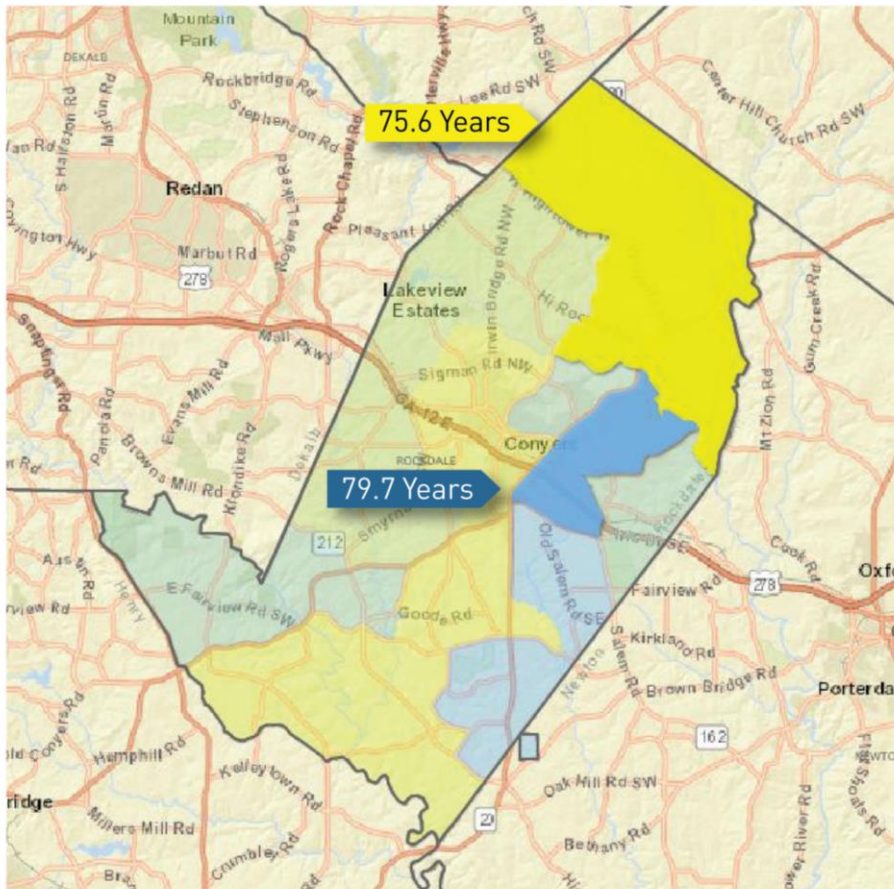


Sources: U.S. Small-area Life Expectancy Estimates Project, 2010-2015

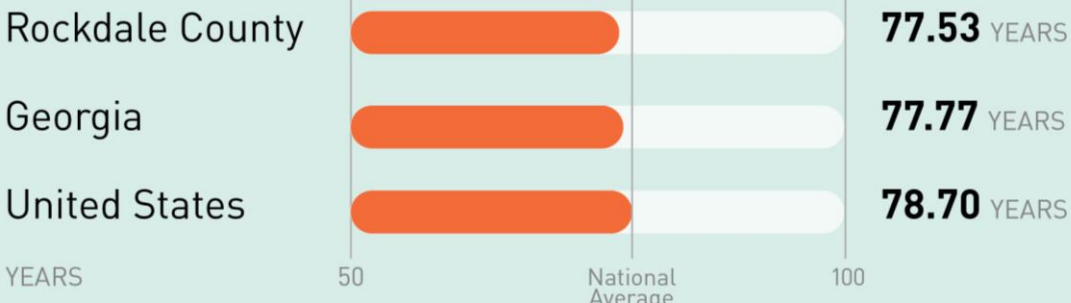
Life Expectancy Bar Charts: Robert Wood Johnson Foundation Life Expectancy Tool, January 2020



# Rockdale County

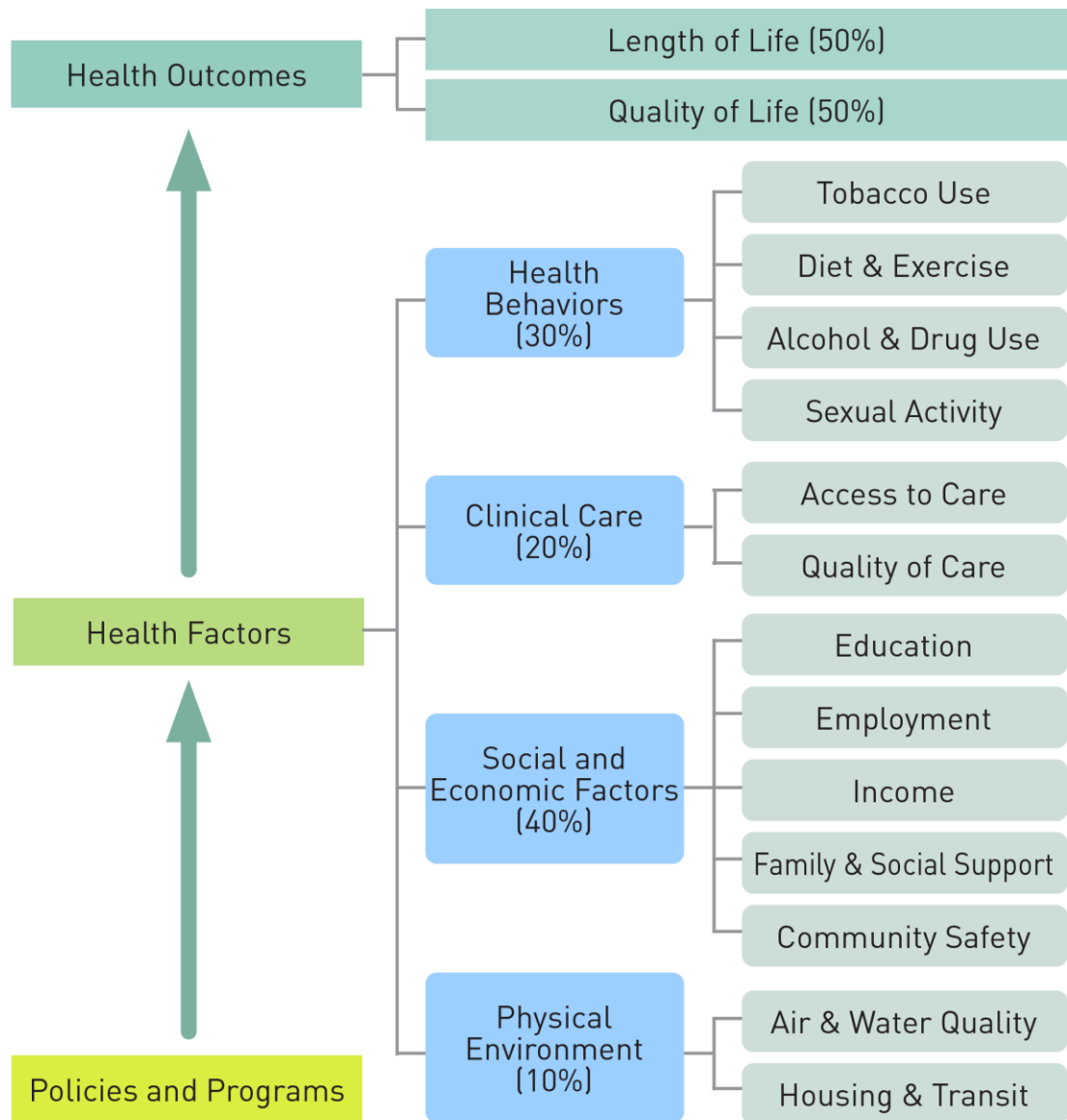


## Average Life Expectancy Comparison



Sources: U.S. Small-area Life Expectancy Estimates Project, 2010-2015

Life Expectancy Bar Charts: Robert Wood Johnson Foundation Life Expectancy Tool, January 2020



# County Health Rankings Model: Health Factors for How Well and Long We Live



**Live Beyond Expectations**  
Regional Strategic Plan Framework  
2020-2025



Helping people live longer, healthier lives in the Atlanta region

## The Goal:

During the next five years, ARC, lead by its Aging and Independence Services Group, will implement a strategic framework, designed to identify and address inequities that create disparities in life expectancy.



# Developing the Framework

- Gathered community and stakeholder insights
- Analyzed ARC's SOAR (Strengths, Opportunities, Aspirations, and (desired) Results)
- Developed a series of goals and objectives



## HEALTH FACTORS

Physical Activity  
Injuries  
Physical Disability  
Chronic Conditions and  
Illnesses

## BUILT/PHYSICAL ENVIRONMENT FACTORS

Air Quality  
Institutionization  
(e.g. Nursing Home)  
Safe, Affordable  
Accessible Housing

## LIFE EXPECTANCY

## SOCIOECONOMIC FACTORS

Racial Inequity  
Gender Inequity  
Education  
Socioeconomic Inequity  
Immigration

## BEHAVIORAL/MENTAL HEALTH FACTORS

Unintentional Poisonings/  
Substance Abuse  
Loneliness and Isolation  
Smoking  
Suicide





## Next steps

### Establish

Establish  
Strategic Plan  
Steering  
Committee

### Engage

Engage with  
community  
partners with  
aligned goals

### Create

Create outreach  
and  
communication  
avenues

### Select

Select  
appropriate  
evaluation  
measurements to  
track progress

### Identify

Identify key areas  
for focused  
efforts

# Questions?

