

Atlanta Regional Commission

Aging & Independence Services

2021 Annual Report, July 1, 2020-June 30, 2021



empowerline

empowerline.org (404) 463-3333



We are living longer, and the aging population is growing.

In 2019, around 822,300 people age 60 or older lived in the 10-county region—**that's 1 in 7 of us.**

By 2050, our 60+ population is expected to grow to 1.8 million, **or more than 1 in 4 of the residents of the 10-county region.**



Since participating in the program, I am very active – I walk two miles every day. I also started eating more vegetables and cook them with no salt. I have found other seasonings to use to make them taste better.

- Client of the diabetes coaching program

Providing services to maximize independence, health & well-being



39,880

MANAGING CARE HOURS
4,992 People Served

148,210

SUPPORTING CARE PARTNERS HOURS
1,075 People Served



1,099,324

HOME-DELIVERED MEALS
9,100 People Served

\$330,780

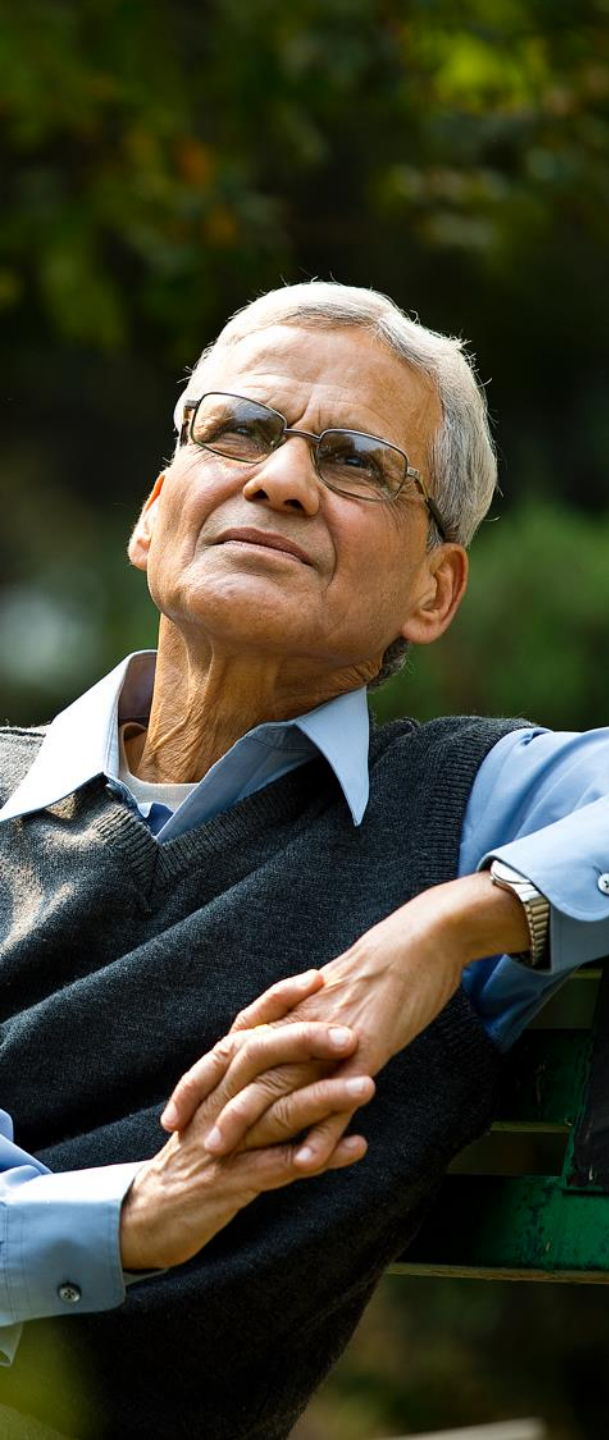
FINANCIAL HELP
2,025 People Served



7,660

LEGAL ASSISTANCE HOURS
522 People Served





New services for older adults

- **One2One Telephone Reassurance**
- **CARES Flex**
- **Home Modifications**
- **Empowerline Self Service**





37,261 people were served
through our interactive **Empowerline**
programs and services



18,893

people received counseling
from certified professionals



56,270

replies to requests for
assistance



17,090

people received home and
community-based services
such as meals, personal care,
and homemaking



60,597*

visits to empowerline.org for
information and referrals

*Missing data for December 4,
2020-January 4, 2021.



As someone whose family has benefited directly from our county's senior services program, I just wanted to say thank you to ARC for supporting it.

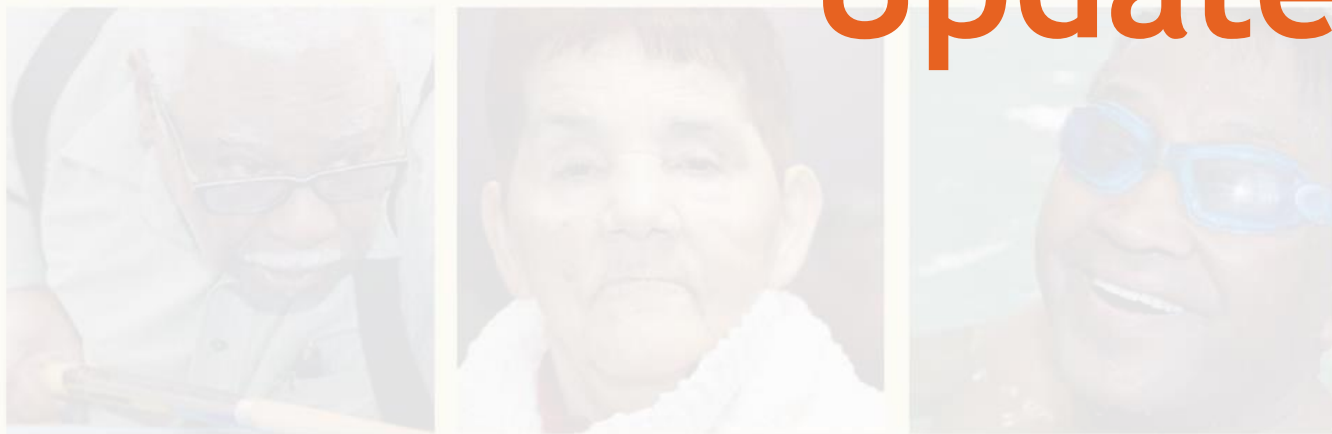
- Metro Atlanta resident

We funded services provided by:

Cherokee County Senior Services
Clayton County Senior Services
Cobb County Senior Services
DeKalb County Office of Aging
Douglas County Senior Services
Fayette Senior Services
Fulton County Department of Senior Services
Gwinnett County Senior Services
Henry County Senior Services
Rockdale County Senior Services
Atlanta Legal Aid Society
Center for Pan-Asian Community Services
Center for the Visually Impaired
Habitat for Humanity
House Proud
Innovative Solutions for Disadvantage and Disability
Jewish Family and Career Services
Latin American Association
Meals on Wheels Atlanta

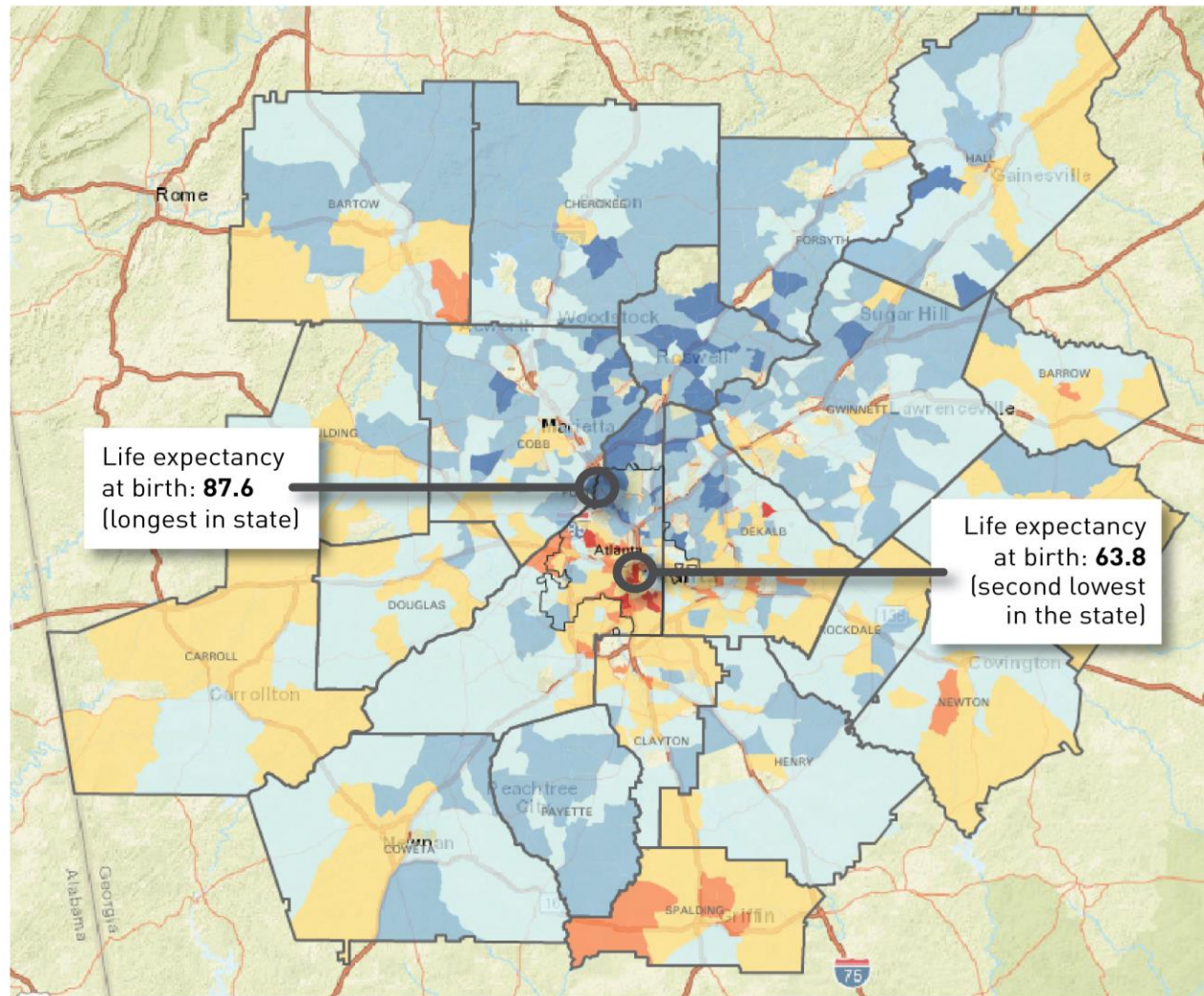


empowerline.org (404) 463-3333

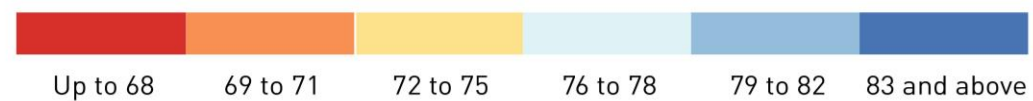


Live Beyond Expectations Regional Strategic Plan Update

ARC



Life Expectancy at Birth



Source: U.S. Small-area Life Expectancy Estimates Project, 2010-2015




The Goal:

ARC, led by its Aging and Independence Services Group, will implement a strategic framework, designed to identify and address inequities that create disparities in life expectancy.

[Live Beyond Expectations 2020-2025](#)

Live Beyond Expectations
Regional Strategic Plan Framework
2020-2025



Helping people live longer, healthier lives in the Atlanta region

ARC
Atlanta Regional Commission

empowerline

Progress to Date

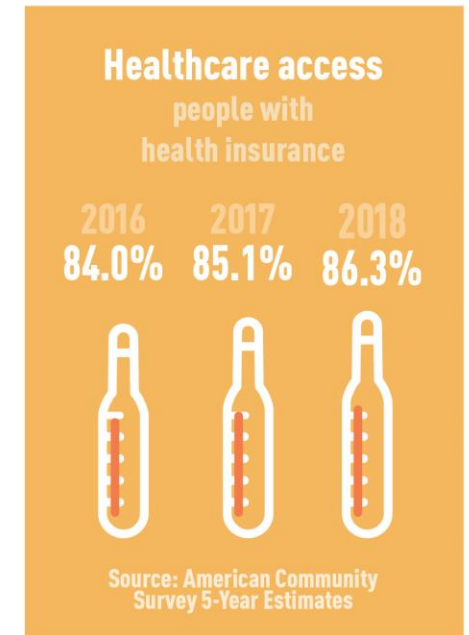
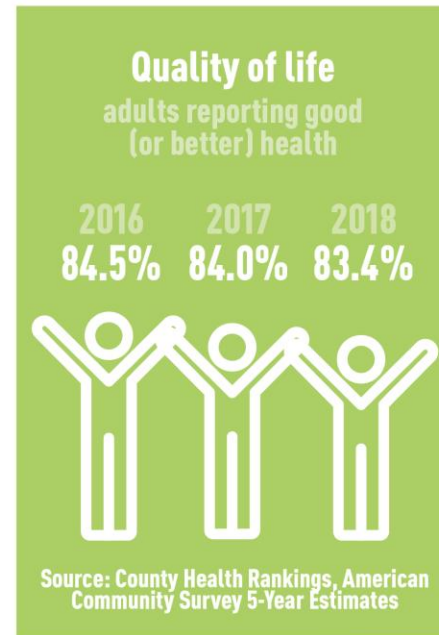
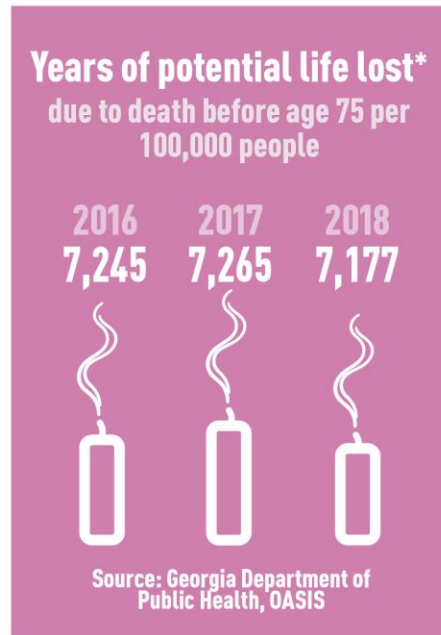
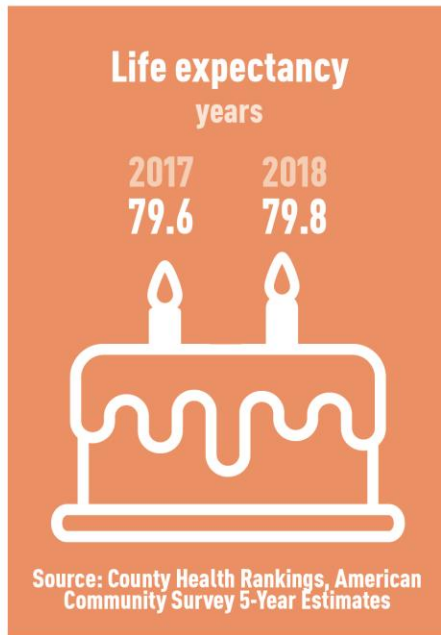
- Launched External Advisory Committee
- Developed Progress Tracker
- Developed County Snapshots
- Mapping clients served compared to communities of low-life expectancy
- Coordination with County-Based Agencies



External Advisory Committee Organizational Affiliations

- Community Foundation for Greater Atlanta
- Focused Community Strategies
- Georgia Division of Aging Services
- Georgia State University, Georgia Health Policy Center
- Grady Memorial Hospital
- Habitat for Humanity Atlanta
- Jessie Parker Williams Foundation
- MARTA
- Mercy Care
- Park Pride
- Partnership for Southern Equity
- Wellstar Health System
- Wholesome Wave Georgia

Tracking Factors that Affect Life Expectancy for Metro Atlanta Residents



*Years of Potential Life Lost (YPLL) before the age of 75 is a measure of premature death. The measure simply takes the difference between actual age of death and age 75. For example: If a person dies at age 65, that is 10 Years of Potential Life Lost. To account for population size at different geographic scales, we use the YPLL rate, which is the average sum of the Years of Potential Life Lost for 100,000 individuals.

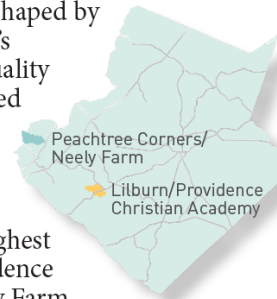


Life Expectancy in Gwinnett County

July 2021

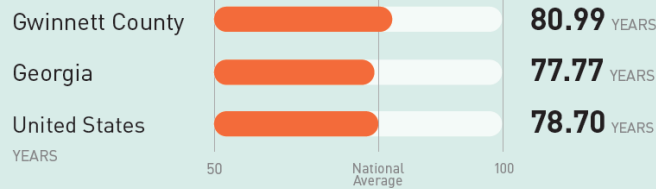
Across metro Atlanta, lifespans vary by as much as two decades or more based on geography. Life expectancy is shaped by numerous complex factors beyond an individual's control, such as access to food, sidewalks, and quality education. Many of these factors can be influenced by our work at ARC and that of our partners.

This document provides a snapshot of select social and economic characteristics that vary between the census tracts with the lowest and highest life expectancy Gwinnett County: Lilburn/Providence Christian Academy and Peachtree Corners/Neely Farm, respectively. Consideration of these factors can inform strategies that help to extend lifespans and improve quality of life.



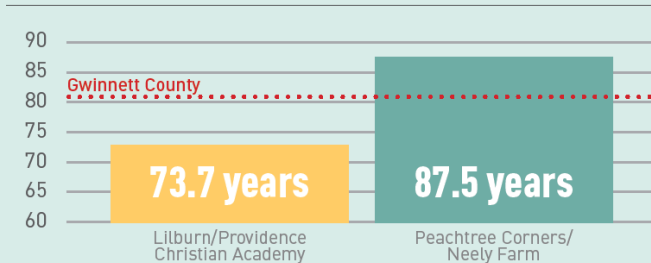
Two neighborhoods 6 miles apart where the average resident has a life expectancy difference of almost 14 years.

Average Life Expectancy Comparisons



Data Source: Robert Wood Johnson Foundation Life Expectancy Tool, January 2020

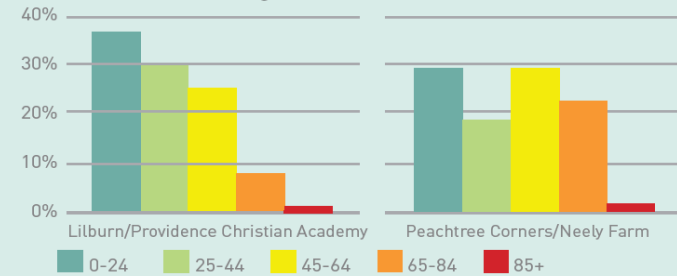
Life Expectancy in Gwinnett



Data Source: U.S. Small-area Life Expectancy Estimates Project, 2010-2015

Factors Affecting Life Expectancy in Gwinnett County

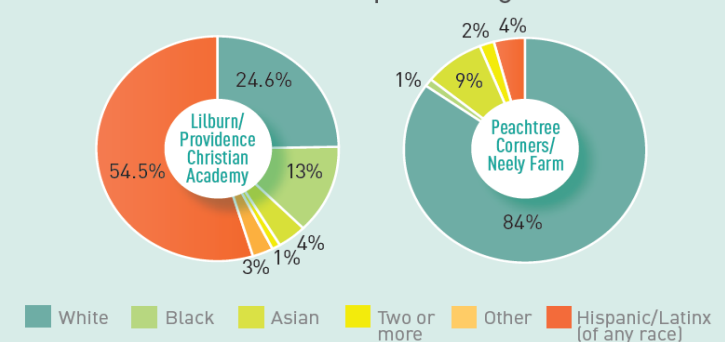
Age Distribution



Two-thirds of residents of the Lilburn-Providence Christian Academy tract are under 45, while about half of residents of Peachtree Corners/Neely Farm are 45 or older. The metro Atlanta region as a whole is more evenly distributed.

Data Source: US Census Bureau's American Community Survey (ACS) 5-Year Estimates, 2015-2019

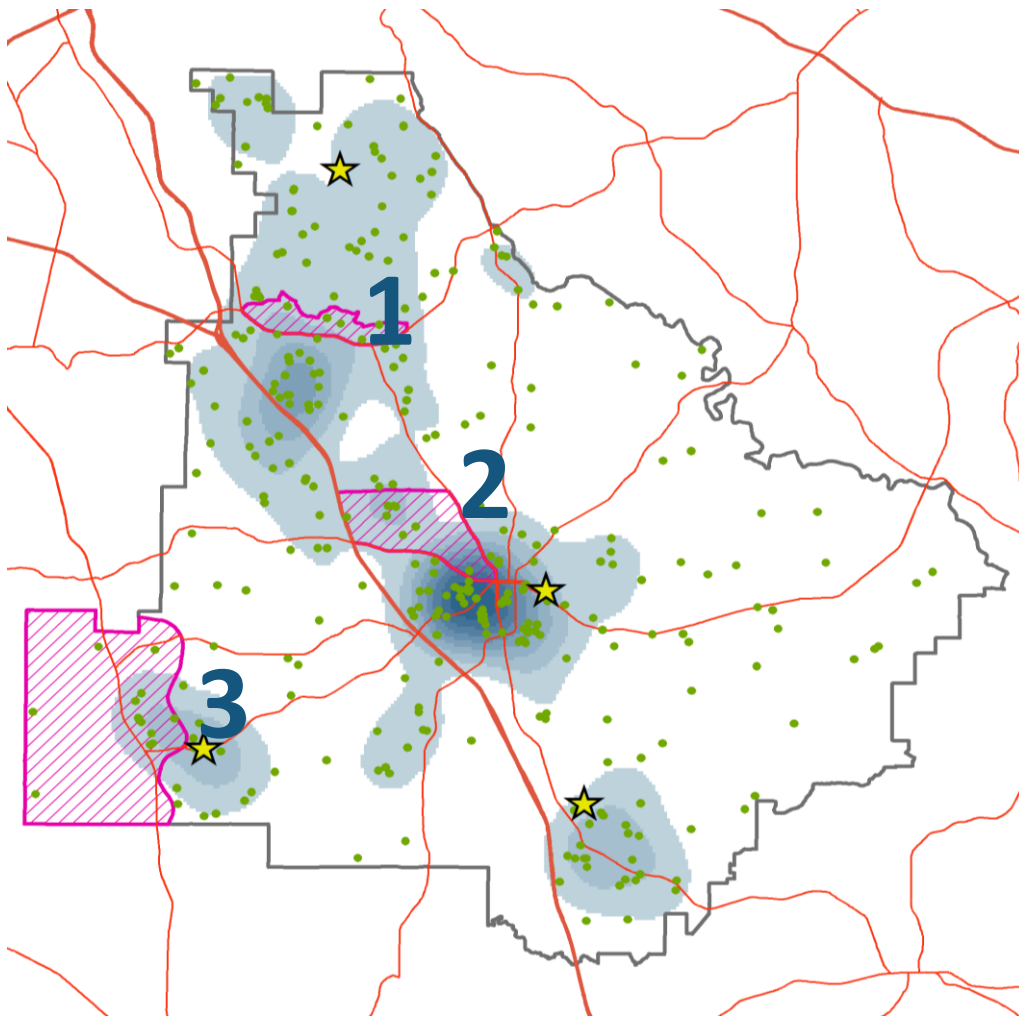
Race & Hispanic Origin



On average, with some minor exceptions, studies have shown that white individuals outlive other individuals at every age and level of education. Reasons for this discrepancy vary by individual, but in general, multiple factors are at play associated with systemic racism, including socioeconomic status and access to health care.

Data Source: US Census Bureau's American Community Survey (ACS) 5-Year Estimates, 2015-2019

Distribution of Aging Services Clients: Henry County



Legend

- One Provider Network Client
- Many Provider Network Clients
- ▨ Census Tract with Low Life Expectancy
- ★ Senior Center

- 37,433 people 60 years or older.
- Henry County Senior Services serves 376 clients* with ARC funds.

*Clients receiving Material Aid in FY21, Respite Care in FY21, Congregate Meals in FY20, Home Delivered Meals in FY21, Personal Care Services in FY21, Homemaker Services in FY21, or Transportation Services in FY20.

Data Sources: DAS Data System; ACS 2019 5-year Estimates

Next Steps

External Partners Collaboration

- Inventory partners and providers
 - ◆ What are the current strengths in focus communities?
 - ◆ What are the opportunities to collaborate?
- Identify additional resources to support work in focus communities

Community Engagement

- Place-based engagement in focus communities

