

Community Resources Committee VIRTUAL MEETING

Mark Mathews, Chair

Thursday, July 9th | 12:00 p.m.

[Join Microsoft Teams Meeting](#) → Click to join

Or Join by Phone by dialing:

470-419-6063

Conference ID: 331 279 714#

1. **Welcome, Acceptance of 03/12/2020 CRC Meeting Summary, Public Comment period** *Mark Mathews, Chair*
2. **Office Reintegration Plan Overview** *Mike Alexander, ARC*
Mike Alexander, Director for the Center for Livable Communities, will provide an overview of current office operations and the development of office reopening plans.
3. **Development of Regional Impact (DRI) program overview and update** *Greg Giuffrida, ARC*
Greg Giuffrida, DRI Program Manager, will provide an overview of the DRI program, summary of 2019 and 2020 development activity, and describe procedural changes in response to the COVID-19. One of ARC's state-mandated roles is to evaluate major development projects, also known as the Developments of Regional Impact (DRI) in the 10-county region.
4. **Neighborhood Nexus Initiatives in Support of COVID-19 Response** *Tommy Pearce, ARC*
Tommy Pearce, the Executive Director of Neighborhood Nexus, will provide an overview of the various analytical tools and dashboards built in support of organizations leading COVID-19 response and recovery efforts. Neighborhood Nexus is enabling mission-driven organizations across Metro Atlanta and the State of Georgia ask the right questions, use the best data, tell compelling stories, and make informed decisions.
5. **What we Know (Or Think We Know) About the Economic Impact of COVID-19** *Mike Carnathan, ARC*
Mike Carnathan, Manager of ARC's Research and Analytics Group, will discuss the economic impacts experienced by the region thus far due to COVID-19 as well as potential long-term economic vulnerabilities in the long-term.
6. **Other and Committee Introduced Topics** *Group*
7. **Announcements** *Chair*

Development of Regional Impact (DRI) update

- Overview of Georgia's Development of Regional Impact (DRI) law and ARC's role
- 2019 recap
- 2020 outlook
- Pandemic response
- Questions and discussion

Community Resources Committee

July 9, 2020

Greg Giuffrida

Plan Reviews Program Manager

ggiuffrida@atlantaregional.org

(470) 378-1531



Purpose of DRI Program



- Identify developments that may have impacts outside local jurisdictions
- Improve coordination among local governments and agencies on growth and development
- Assessing potential impacts of developments before conflicts arise

History of the DRI Program

- Required by 1989 Georgia Planning Act (O.C.G.A. 45-12-200, et seq., and 50-8-1, et seq.)
- Foundation for community and regional planning in Georgia:
*“**Coordinated and comprehensive planning** by all levels of government within the State of Georgia...”*
- Gives responsibility for statewide DRI program management to Georgia Department of Community Affairs (DCA)
- Emphasizes coordination with Regional Commissions (RCs) and local governments

What is GRTA's role?

- Georgia Regional Transportation Authority
- State-level authority to address mobility and air quality in metro Atlanta
- Empowered by state to conduct its own DRI reviews and require conditions of development to mitigate transportation impacts



What makes a DRI?

- When project exceeds thresholds that vary by location in ARC regional plan
- Lower threshold for Rural areas, higher for Core
- Can be large conventional developments or specific uses like quarries, cement plants, etc.
- DRI “triggered” by local action like rezoning, permits, etc.
- ARC determines whether it qualifies as DRI
- ARC determination begins a separate but parallel GRTA review

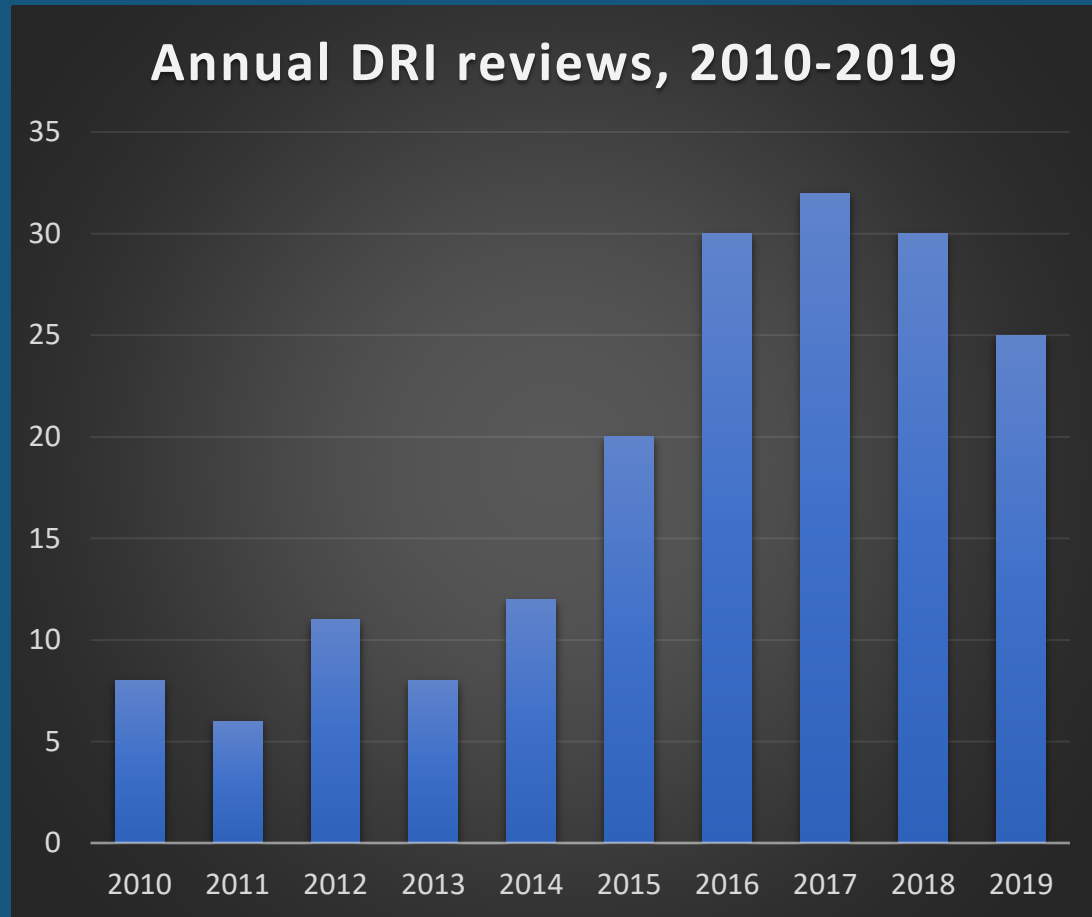
What makes a DRI?

Type	Typical threshold (varies from urban to rural)
Residential	500 units
Mixed-Use	500,000 square feet of all uses
Hospitals/health care	400 beds
Commercial	400,000 square feet
Office	500,000 square feet
Wholesale/distribution/industrial	500,000 square feet
Hotels	500 rooms

Other unique uses with potential impacts

Type	Typical threshold
Airports	New or runway extensions of 500+ feet
Attractions/recreation	1,500+ parking spaces, seating of 6,000+
Waste handling facility	Within 1 mile of public facility (river, school, park, etc.)
Quarry/asphalt/cement	Within 1 mile of public facility (river, school, park, etc.)
Truck stops	10+ diesel pumps or 20+ truck parking spaces
Corrections	300+ new beds or 375+ new peak-hour trips
Post-secondary schools	2,400+ new students or 25%+ expansion

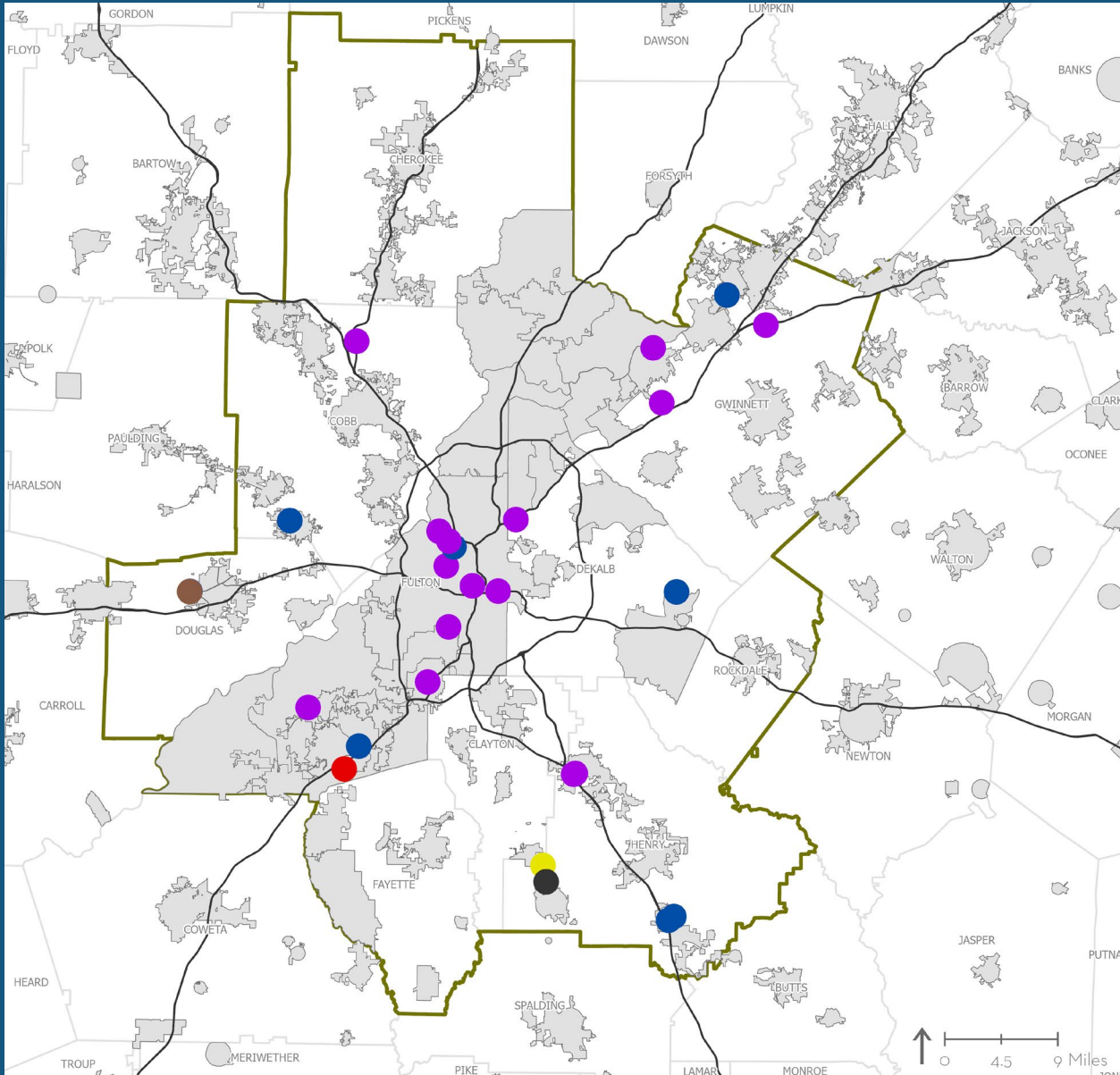
Recap of 2019 DRI reviews



25 projects reviewed

- Industrial: 6,695,826 sf
- Commercial: 2,215,463 sf
- Multifamily: 11,885 units
- Single-family: 1,754 units
(*attached + detached*)

2019 DRI reviews in Atlanta Region



- Mixed Use: 14
- Industrial/warehouse: 7
- Concrete Plant: 1
- Quarry: 1
- Residential-only: 1
- Truck Stop: 1

Highlighted project: Quarry Yards (DRI #2993)

- City of Atlanta
- MARTA Green Line
- Adjacent to future BeltLine Westside Trail and Proctor Creek Greenway Trail
- Opportunity Zone
- 2,321 residential units
- 300 hotel rooms
- 1,880,000 sf office
- 171,400 sf retail
- ARC comments: Much more attention to pedestrian connectivity needed; stream buffers need to be defined



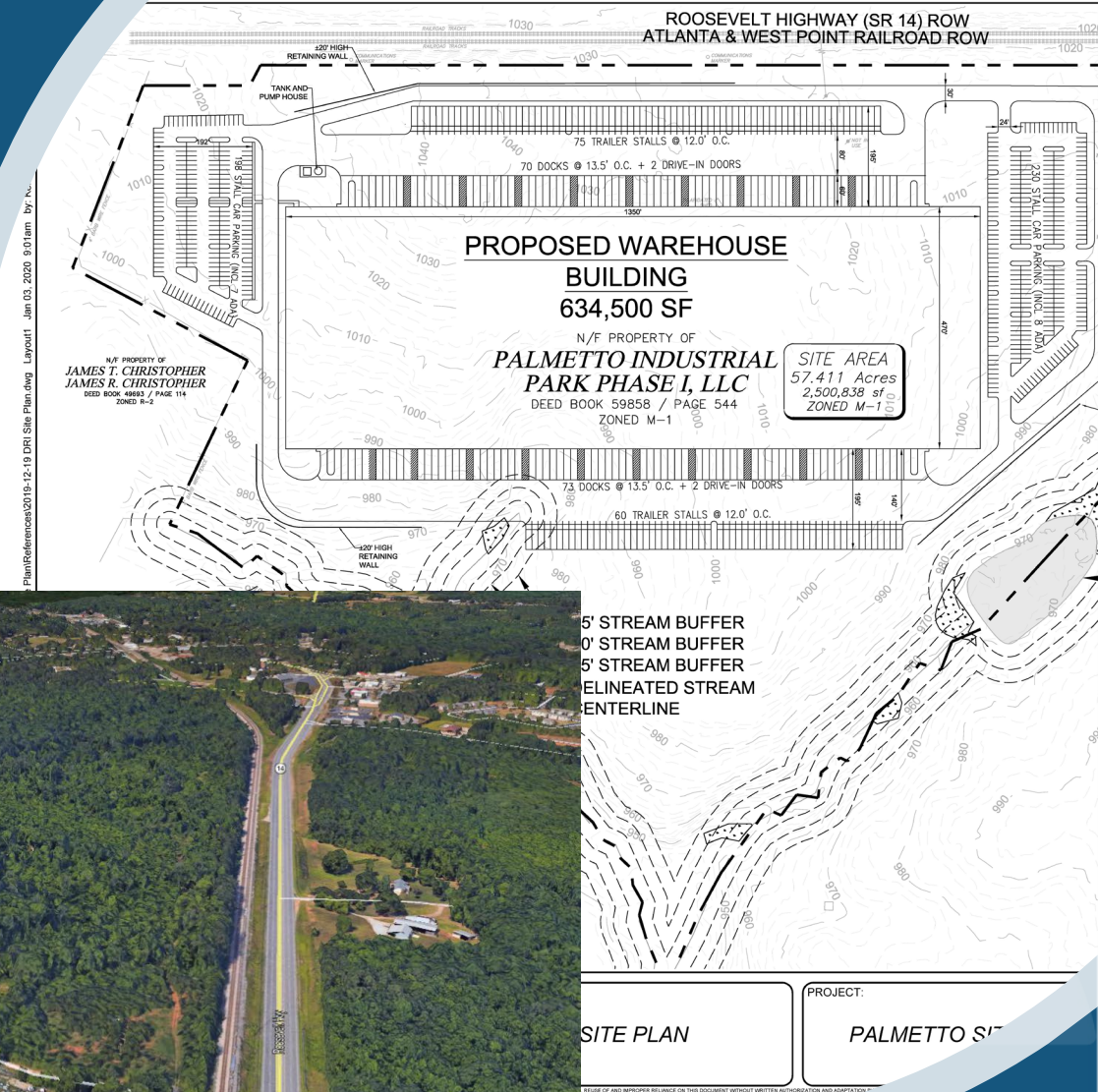
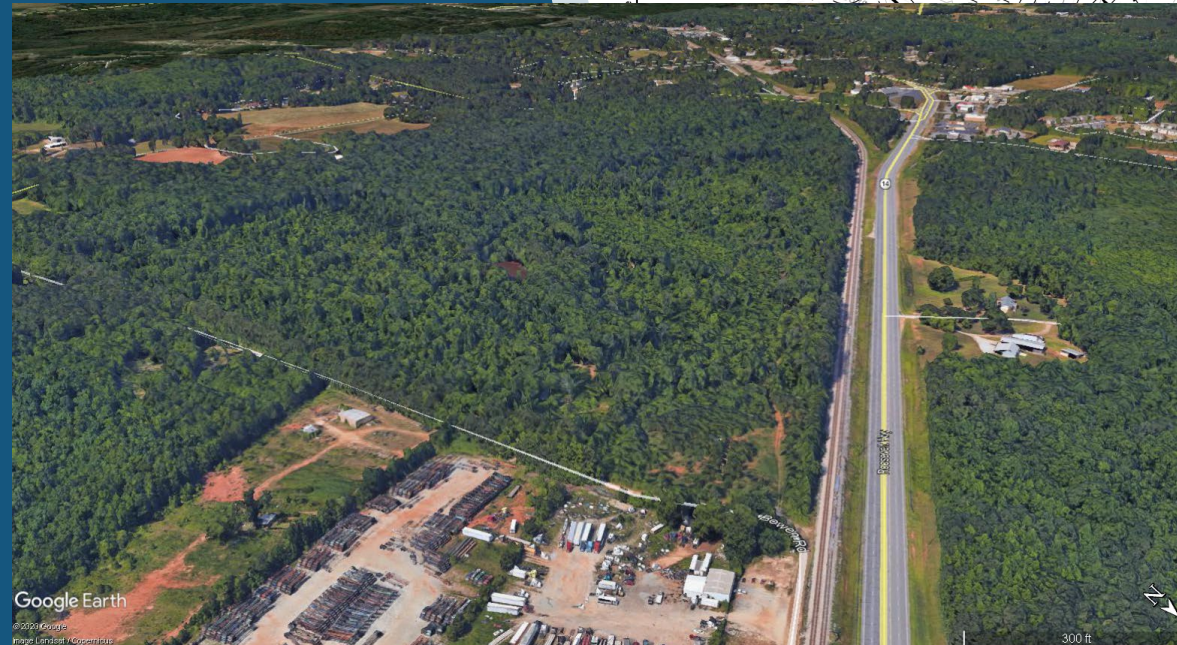


Highlighted project: Grove at Towne Center (DRI #3033)

- City of Snellville
- Mixed-use town center based on LCI plan
- 429 residential units
- 170,000 sf office/retail/community space
- Town green
- ARC comments: Consider conversion of one-way streets to two-way; add crosswalks and reduce curb radii to lower speeds; integrate with city trail plans

Highlighted project: Palmetto Site (DRI #3033)

- 634,500 SF distribution warehouse
- City of Palmetto
- ARC comments: Install pedestrian accommodation from nearby MARTA bus stops for future employees



2020 outlook

15 reviews complete/in progress
~10 pending

- Industrial: 17.2 million sf
- Commercial: 3.2 million sf
- Multifamily: 1,700 units
- Single-family: 1,980 units
(*attached + detached*)

- Big increase in warehouse/distribution, especially in western metro
- Slowdown in multifamily?
- COVID-19 effects still unknown. Some DRIs very long-term projects, so maybe not a factor
- We're still busy!

Remote DRI procedures for COVID-19

- In past, all Pre-Review meetings were hosted at ARC office
- March 12: Implemented new procedure for remote meetings. 10 hosted so far.
- Applicants must email required documents 2 business days before
- Because accurate traffic counts can't be collected at this time, applicants asked to gather recent data and make forecast
- GRTA, local government, and GDOT (if near state routes) must approve methodology

Questions?

For questions related to DRIs and other ARC Plan Review functions, please contact:

Greg Giuffrida (juh-FREE-duh)
Plan Reviews Program Manager
470-378-1531
ggiuffrida@atlantaregional.org

<https://atlantaregional.org/community-development/comprehensive-planning/developments-of-regional-impact/>



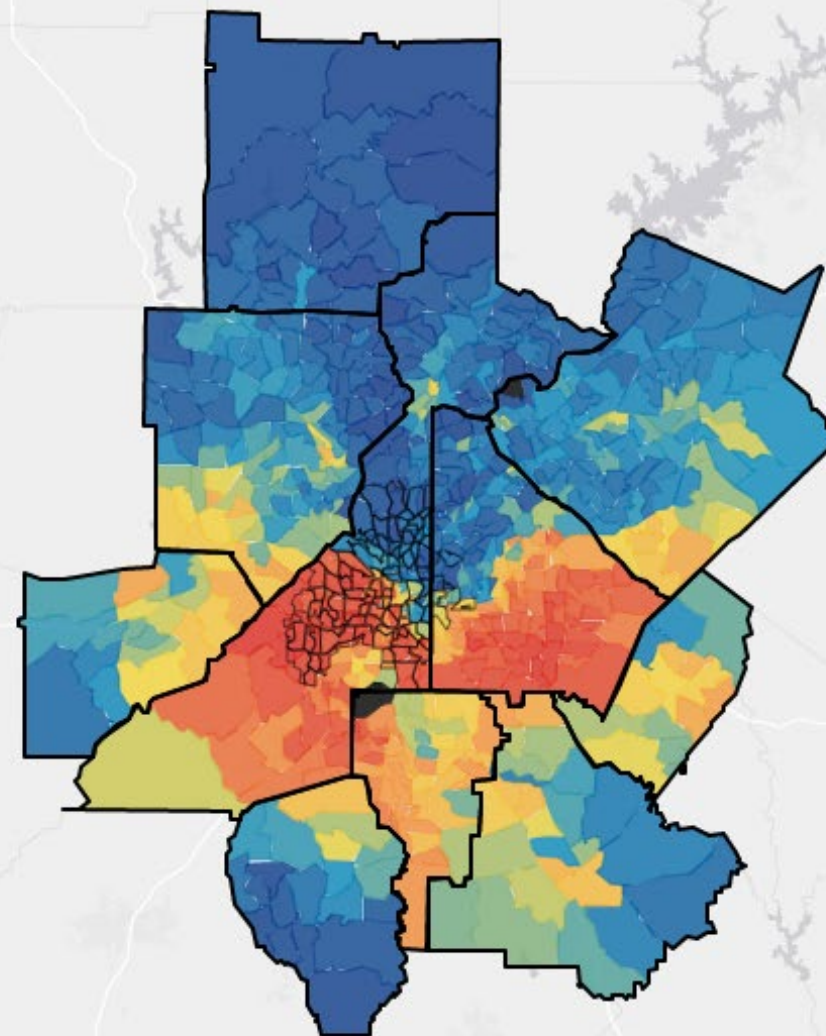
Airport City DRI #3063



**Align your services to
community needs with
stress-free data.**

Tommy Pearce, Executive Director
tpearce@atlantaregional.org

www.neighborhoodnexus.org



Neighborhood Nexus is a collaborative initiative with strong regional and national partners



Atlanta Regional Commission



NATIONAL
NEIGHBORHOOD
INDICATORS
PARTNERSHIP



United Way of
Greater Atlanta



Without community data and the know-how to leverage it, mission-driven organizations are...

- **limiting impact** and effectiveness
- risking **misalignment** of programs and community needs
- leaving **unfilled service gaps** for individuals and families
- **wasting funds and resources**

Neighborhood Nexus is solving this by enabling mission-driven organizations to more easily and confidently...



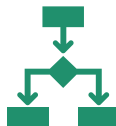
Ask the right questions



Use the best data



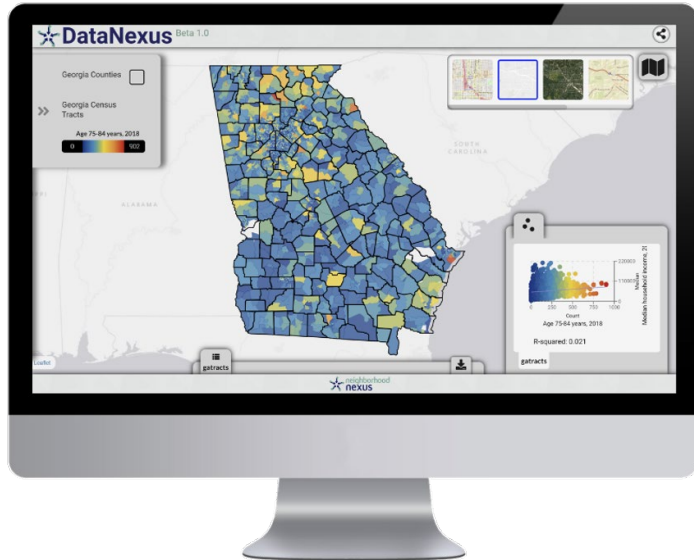
Tell compelling stories



Make informed decisions

Comprehensive Access

to thousands of indicators from dozens of sources and a free-to-use mapping and visualization platform



Custom Insights

and tailored tools for organizations looking to tell their story and/or make data-informed decisions



Data Fluency

programs to ensure organizations have the training and tools they need to maximize their impact



Since March...

Pandemic + Economic Crisis → Equity Movement

Crisis → Opportunity

- Responding to **countless data requests** from nonprofits and local governments across the state
- Launched a **covid page** with interactive maps, dashboards, and tools: neighborhoodnexus.org/covid19
- **Doubled our team**
- Redesigned and **rewrote our website** to increase accessibility to non-technical users
- Ramped up and published an entirely new data and **mapping platform**: neighborhoodnexus.org/maps
- Led a workgroup of GCN's coordinated Metro Atlanta Covid **Task Force**
- Had four **babies**
- Participated in **peer learning** among National Neighborhood Indicators Partnership members
- Contributed to approximately 20 **webinars**
- Continued and ramped up **project portfolio**
- Established new and deeper **partnerships**

Align your services to community needs with stress-free data

Empowering Georgia's mission-driven organizations to more easily and confidently ask the right questions, use the best data, tell compelling stories, and make informed decisions.

[Take me to the data →](#)[Scope a custom project](#)

COVID-19

The current health and economic crisis is unprecedented. We're focused on actionable data and insights to guide your response. [View our COVID-19 resources here.](#)

How much do you know about the communities you serve? Do your programs address local health, economic, and educational needs, or leave **unfilled service gaps**? Are you leveraging data to secure vital funding, or **wasting resources** delivering the wrong programs?

A [study](#) of 232 Metro Atlanta nonprofits showed growth in scale, reach, and impact when using community data in planning. Those that didn't were more likely to **remain stagnant**.

The insights you need

Neighborhood Nexus makes **hundreds of community indicators** from dozens of sources **freely available** and **easy to access** on your own. Or engage our team on a project.



Maps & Data

Visualize, analyze and export hundreds community indicators for free

[Create →](#)

Deep Dives

Explore articles and dashboards looking at regional and statewide issues and trends

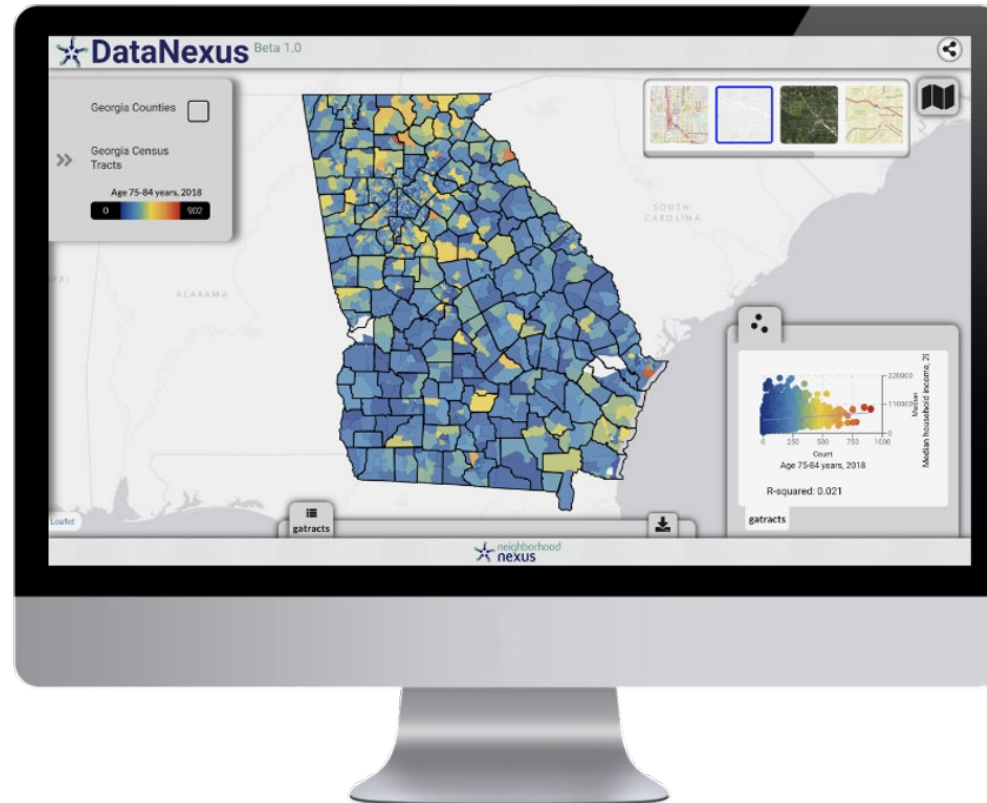
[Explore →](#)

Custom Insights

Let our team help you create tailored tools and data stories to maximize your impact

[Learn more →](#)

Introducing **Data Nexus** ^{beta}



www.neighborhoodnexus.org/maps

www.neighborhoodnexus.org/covid19

March 20, 2020

How we're thinking about COVID-19

The crisis that Atlanta and Georgia and the world is facing is a unique threat in its scale and urgency; however, the opportunities it presents are also significant. The covid-19 pandemic is shining a light on systemic inequities and historic blindspots—whether unknown or unacknowledged—and our response could inform our approach to addressing long-term systemic change.

The effects of the covid-19 pandemic immediately developed into concurrent public health and an economic crises. Thus, medical *and* economic interventions are necessary, especially for those families finding themselves at the intersection of both.

As such, we at Neighborhood Nexus have been working with public agencies, nonprofit service providers, and the philanthropic community to provide data-informed analysis and guidance. From creating maps and tools, conducting economic modeling to inform policy decisions, and supporting relief funds and planning efforts, we're here for you. Please reach out anytime to tpearce@atlantaregional.org.

Below, we've organized critical data and resources regarding Georgia's most vulnerable populations as you and other agencies work to provide relief over the coming weeks and months. Here, you will find:

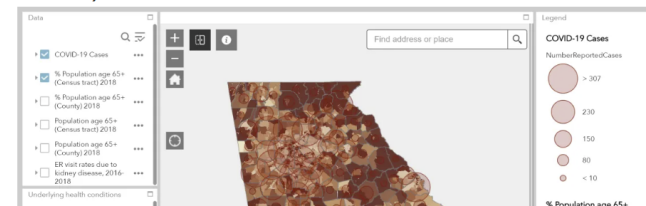
- [information on vulnerable populations, including health and economic indicators](#)
- [economic impacts](#)
- [covid-19 incidents and mortality trends](#)
- [analysis into social patterns](#)
- [a list of other community resources](#).

More community data can be found throughout our site, especially on our [mapping page](#) and the [33n blog](#).

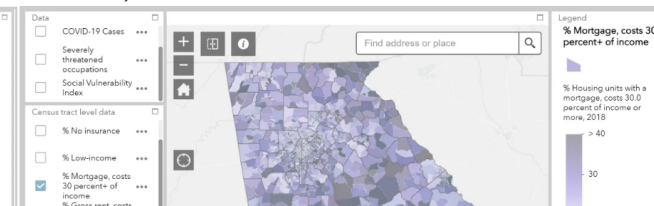
Vulnerable Populations

The following maps look at indicators relating to high-risk groups, [according to the CDC](#) and economic analysis. Use these tools to identify individuals, families, and local partners. Click the images to open full-screen interactive tools.


Medically Vulnerable





Economically Vulnerable



33n.atlantaregional.com



Finding Meaning at 33.7°N

Finding Meaning at 33.7°N
Powered by  and 

Regional SnapshotSpecial FeaturesWeekly FeaturesThe QuarterMetro Atlanta SpeaksCounty Dashboards

COVID-19 Weekly Report

Week ending July 3, 2020

Brought to you by

33n

Powered by

ARC

neighborhood nexus

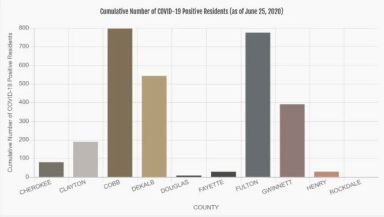
COVID-19 Weekly Report: July 3, 2020

By Layla Bellows | July 3rd, 2020 | COVID-19, Friday Factday

The latest information on new cases and economic impacts in ARC's 10-county area.

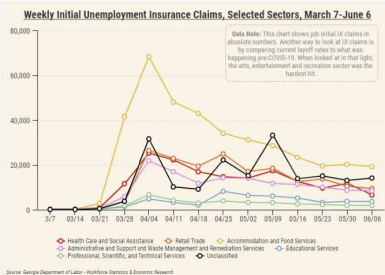
Read More >Comments Off

Cumulative Number of COVID-19 Positive Residents (as of June 25, 2020)



Data Diverison: From Olmstead to COVID-19

Weekly Initial Unemployment Insurance Claims, Selected Sectors, March 7-June 6



Friday Factday: Differential Economic Impacts of COVID-19 by Industry

By Layla Bellows | July 3rd, 2020 | COVID-19, Economy, Equity, Friday Factday

Read More >Comments Off

COVID-19 Weekly Report

Week ending June 26, 2020

Brought to you by

33n

Powered by

ARC


neighborhood nexus


COVID-19 Weekly Report: June


Search 33n


Search ...


Most Popular Posts

COVID-19 Weekly Report: June 5, 2020
1,586 views

COVID-19 Weekly Report: June 12, 2020
1,052 views


COVID-19 Weekly Report: June 26, 2020
475 views

Monday Mapday: Interactive Map of Atlanta Homicide Data
465 views

COVID-19 Weekly Report: June 19, 2020
319 views

Categories

Public Health (70)
Other Demographics (59)
Race and Diversity (47)
Age and Generations (43)
Transportation (68)
Education (39)
Metro Atlanta Speaks (41)
Housing (54)
Economy (135)



Actionable Data
+ Storytelling

Better Decisions

Neighborhood Nexus is solving this by enabling mission-driven organizations to more easily and confidently...



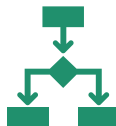
Ask the right questions



Use the best data



Tell compelling stories



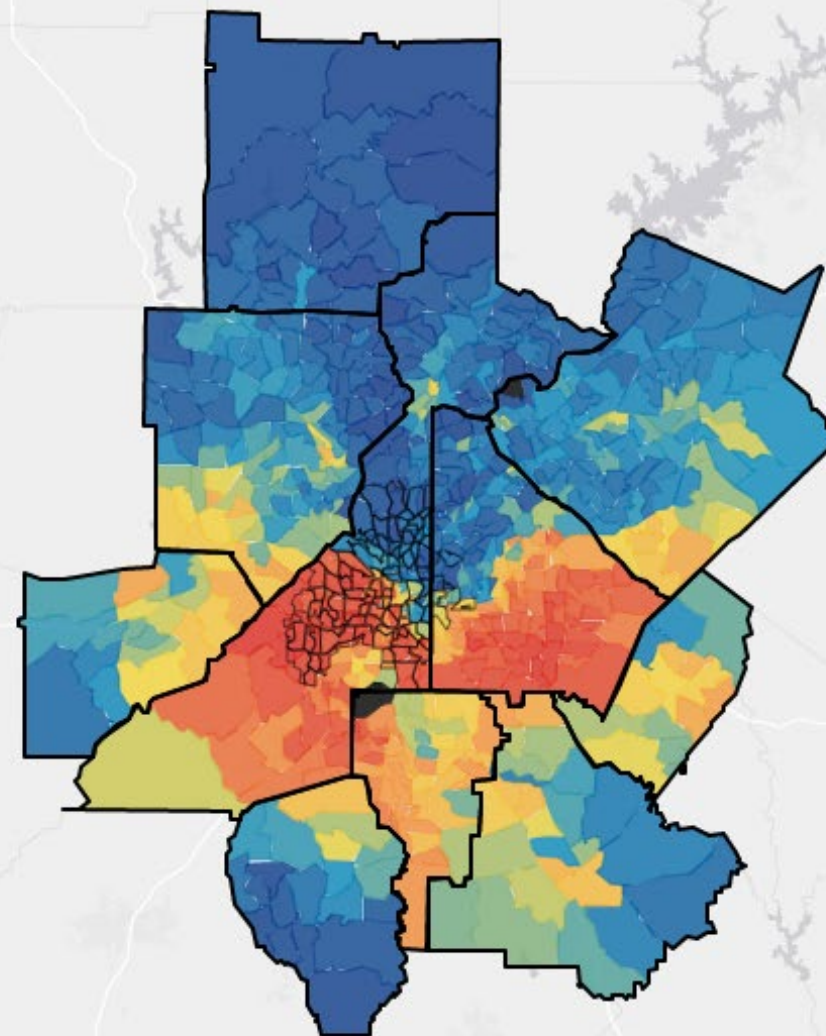
Make informed decisions



Thank you!

Tommy Pearce, Executive Director
tpearce@atlantaregional.org

www.neighborhoodnexus.org



GEORGIA

What We Know (or think we know) About The Economic Impact of COVID-19

**Before We Talk Economy, Let's Take Quick
Look at the Public Health Side of things!**

COVID-19 Weekly Report

week ending July 3, 2020

The COVID-19 Weekly Report, jointly produced by the Atlanta Regional Commission and Neighborhood Nexus, provides the latest data about the state of the novel coronavirus in the Atlanta area. Information comes from the Georgia Department of Public Health, Georgia Labor Market Explorer, and Google COVID-19 Mobility Reports, among others. The report focuses on ARC's member governments but also examines the broader metro area as appropriate.



Key Insights

The most noteworthy updates for this week are:

- **3,676 new COVID-19 cases**, a decrease of 10 percent from last week's 4,084 new cases.
- **60,779 new unemployment insurance (UI) claims this week, down 7.7 percent** from 65,842 claims last week.
- **17,683 new jobs** posted this week, **up 29.7 percent** from 13,635 postings last week.
- Overall **time spent out of home is down 2.7 percentage points**, still 16.4 percent below the baseline.
- There were **161 million workweek miles traveled this week**, up 2.3 percent from the 157 million last week.

www.33n.atlantaregional.com

Cases Are Trending Up...

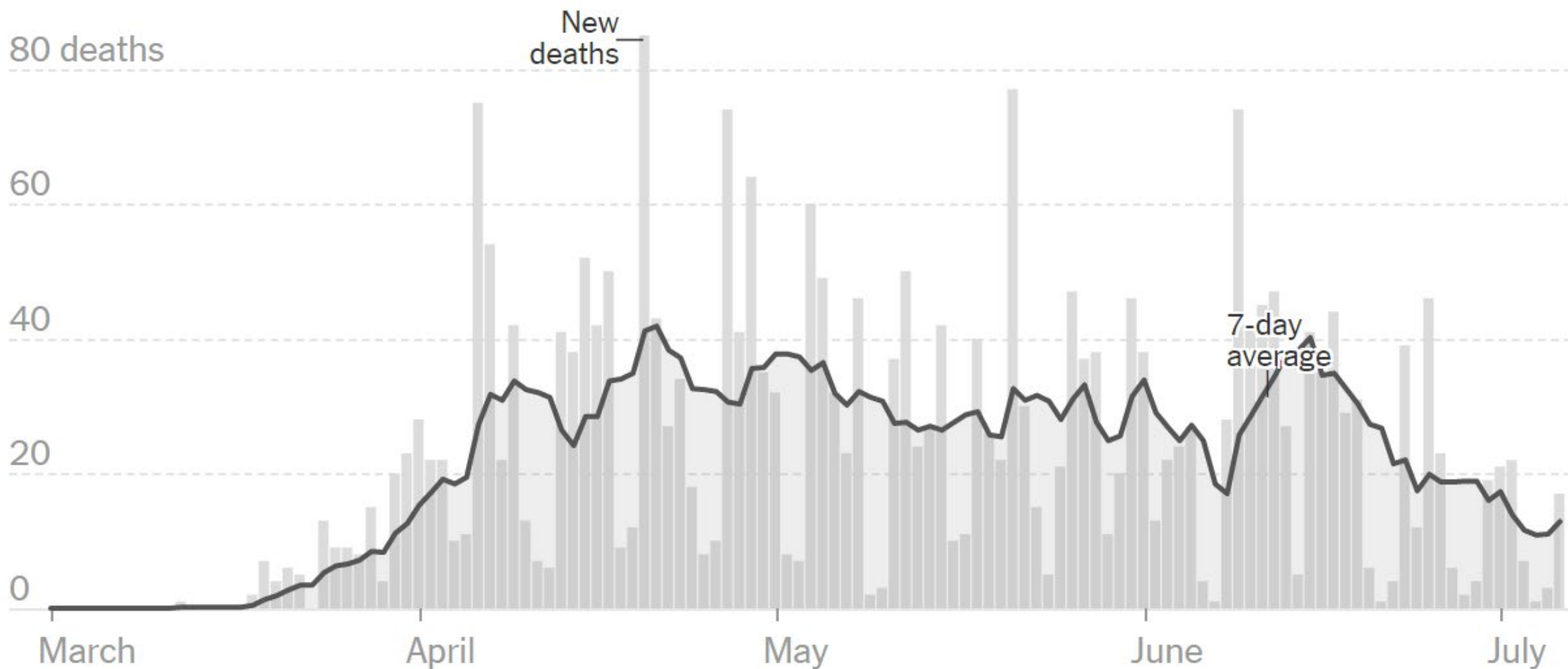
New reported cases by day in Georgia



Note: The seven-day average is the average of a day and the previous six days of data.

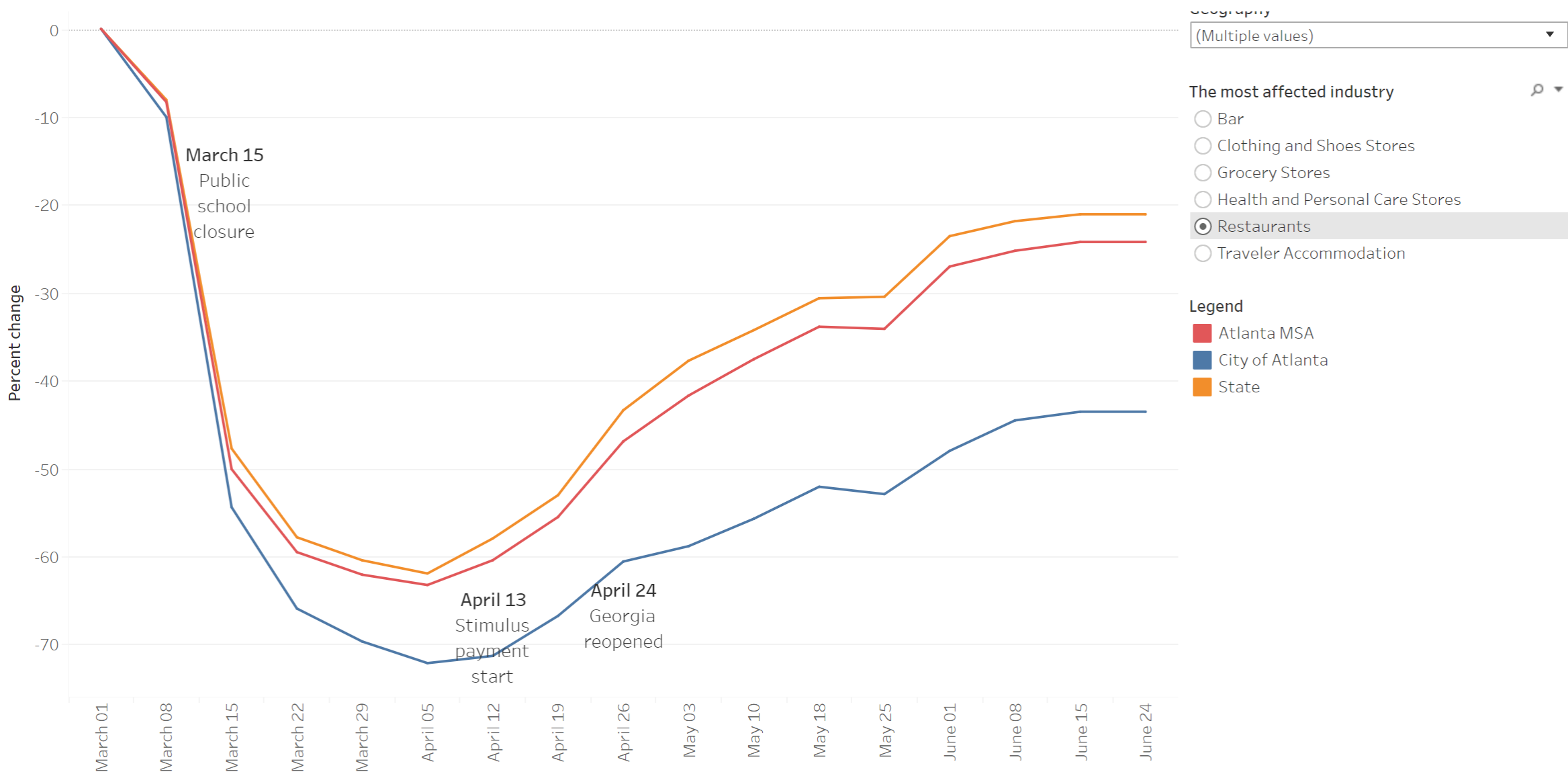
Deaths Are Trending Down...

New reported deaths by day in Georgia



Data source: NY Times

Reopening...

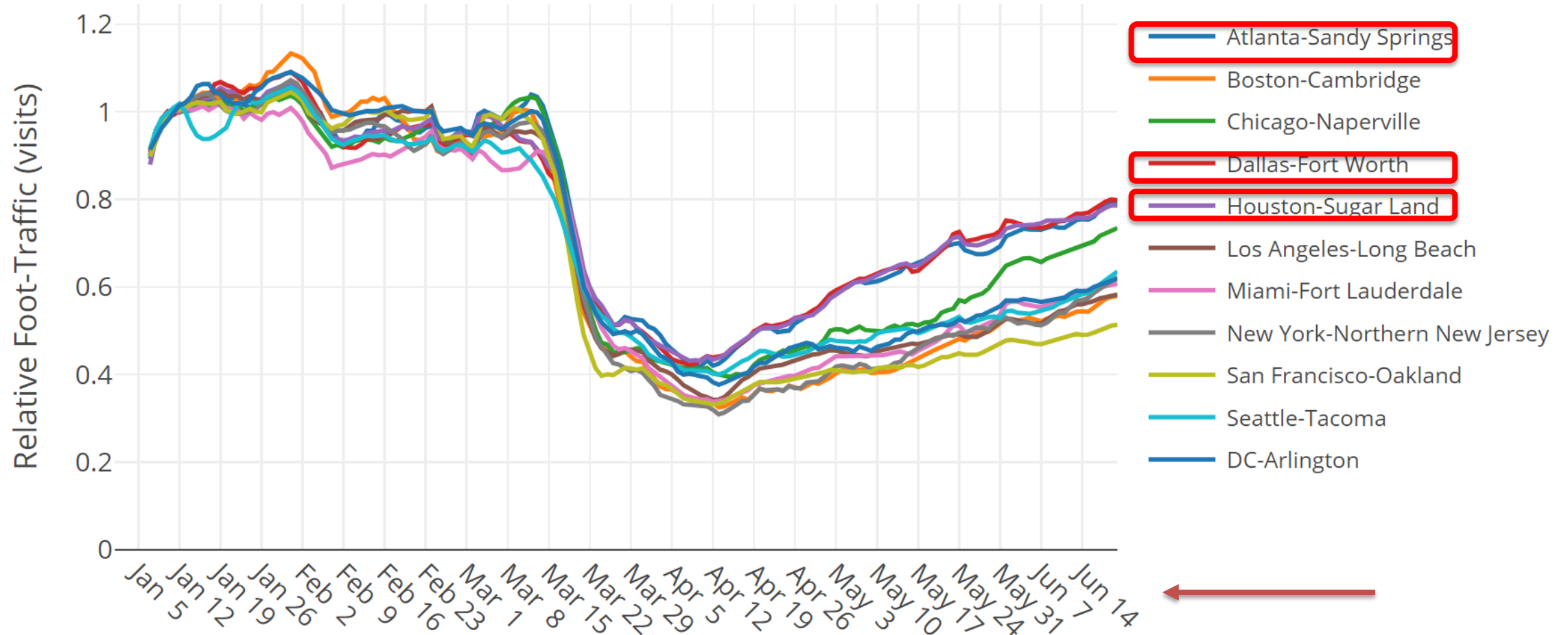


Source: Safegraph (Weekly Pattern))

One Strand is Not Like The Other...

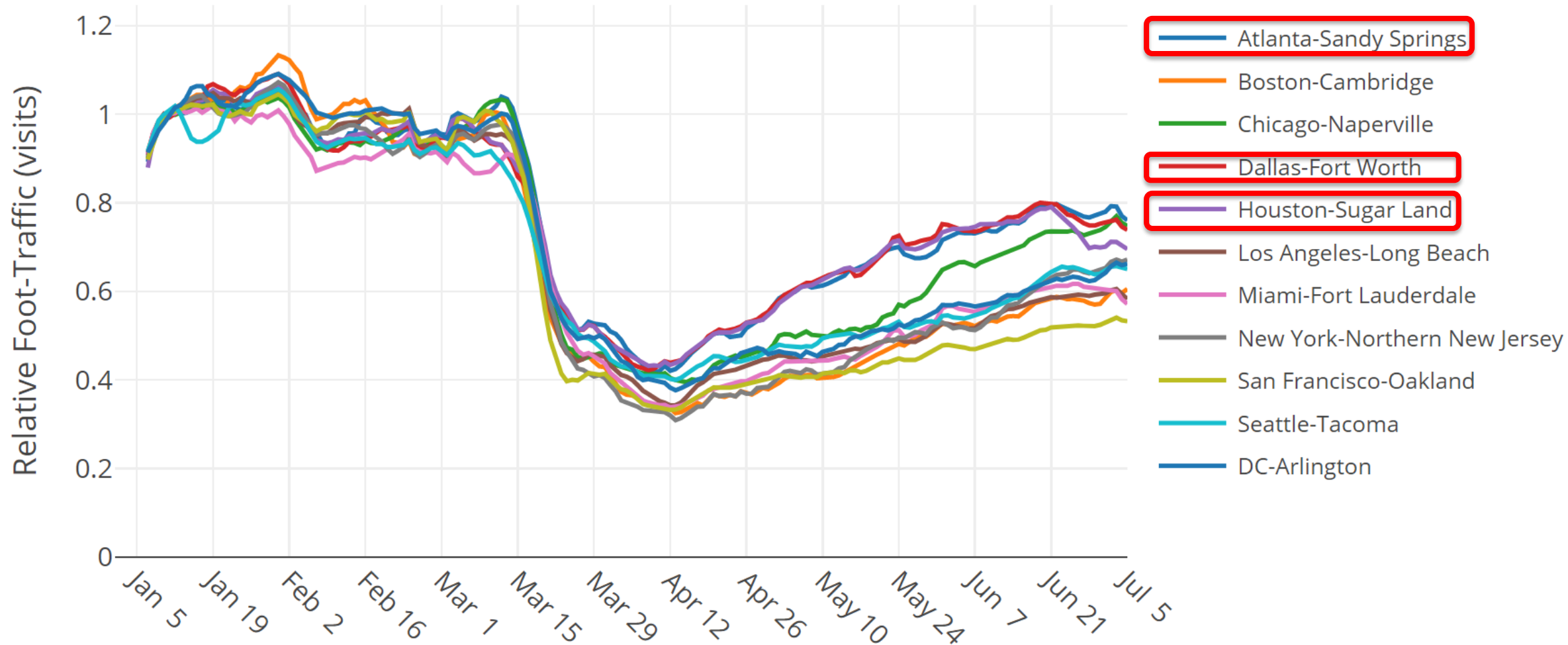
TOP IMPACTED REGIONS

All Regions



Source: Safegraph

...Now?



Source: Safegraph

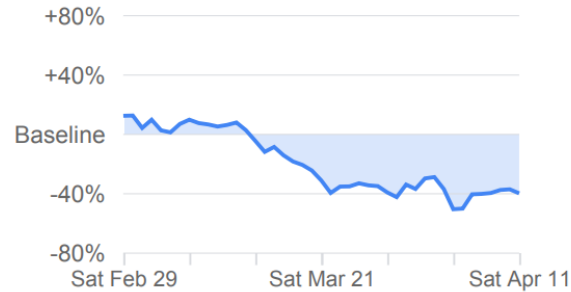
Just Google It

12 Weeks Ago

Retail & recreation

-40%

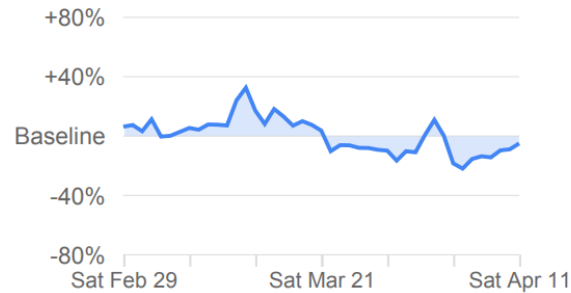
compared to baseline



Grocery & pharmacy

-5%

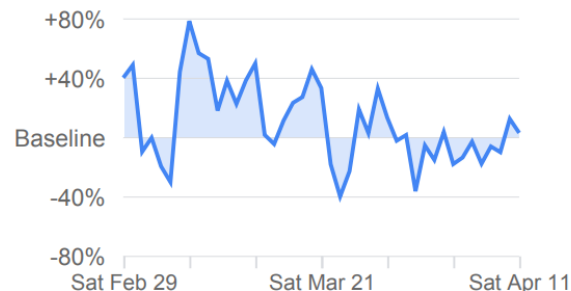
compared to baseline



Parks

+3%

compared to baseline



Latest (July 3)

Retail & recreation

-6%

compared to baseline



Grocery & pharmacy

+12%

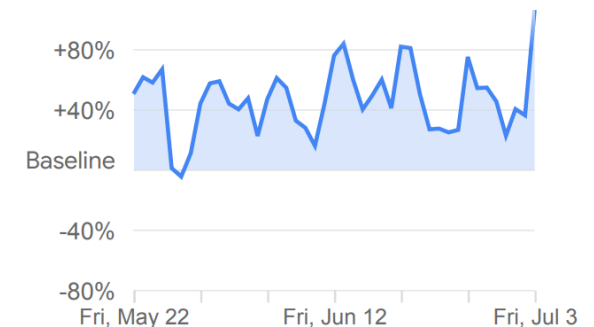
compared to baseline



Parks

+106%

compared to baseline



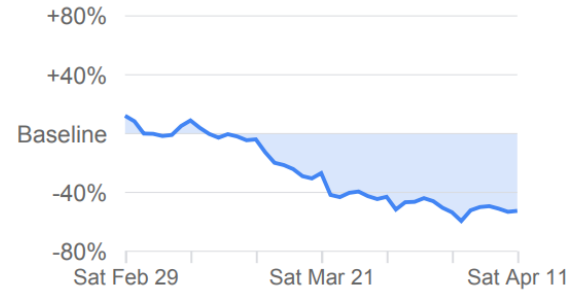
Just Google It

12 Weeks Ago

Transit stations

-53%

compared to baseline



Workplaces

-36%

compared to baseline



Residential

+13%

compared to baseline



Latest (July 3)

Transit stations

-32%

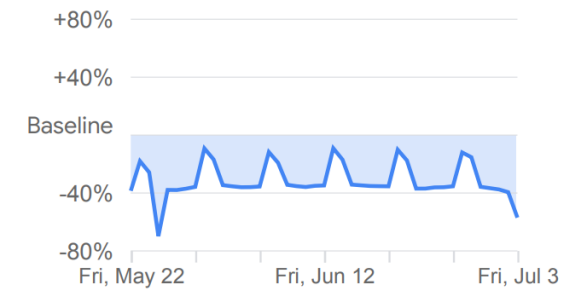
compared to baseline



Workplaces

-57%

compared to baseline



Residential

+13%

compared to baseline



What We Are Thinking

How much of a risk to your health and well-being do you think the following activities are now?

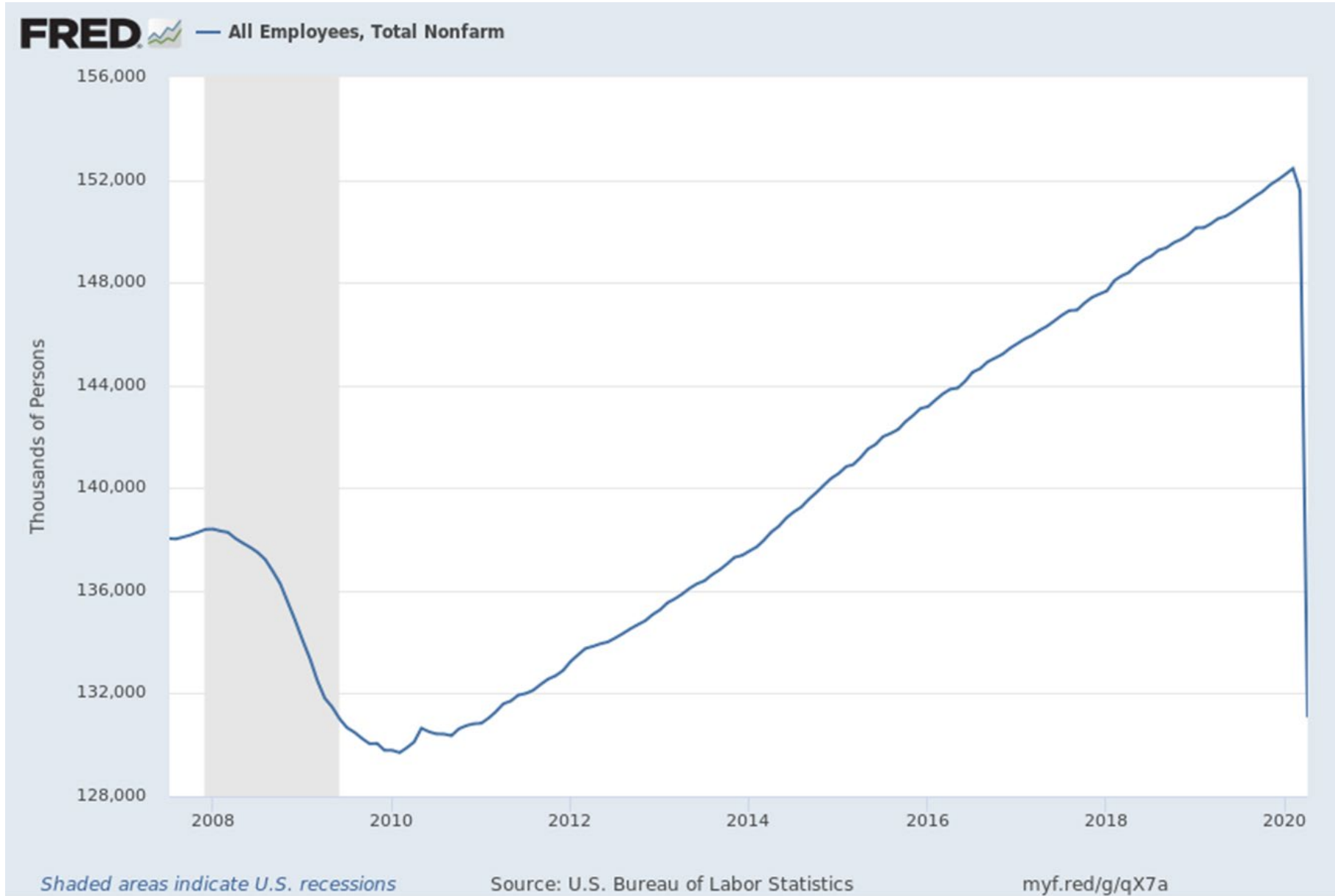
% Large risk or Moderate risk



Source: Ipsos

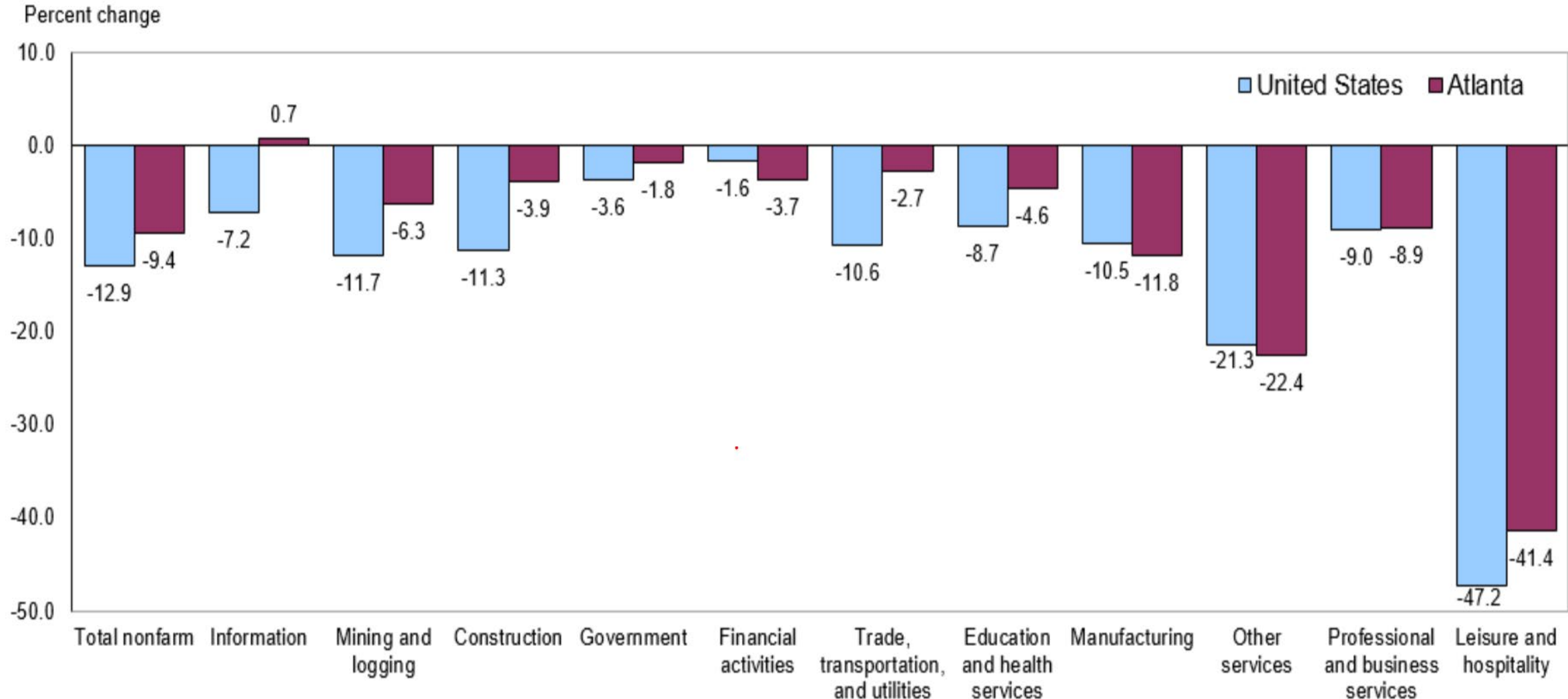
So, About the Economy...

Friday, May 8. Worst Economic Day In History...



April Was a Rough Month...

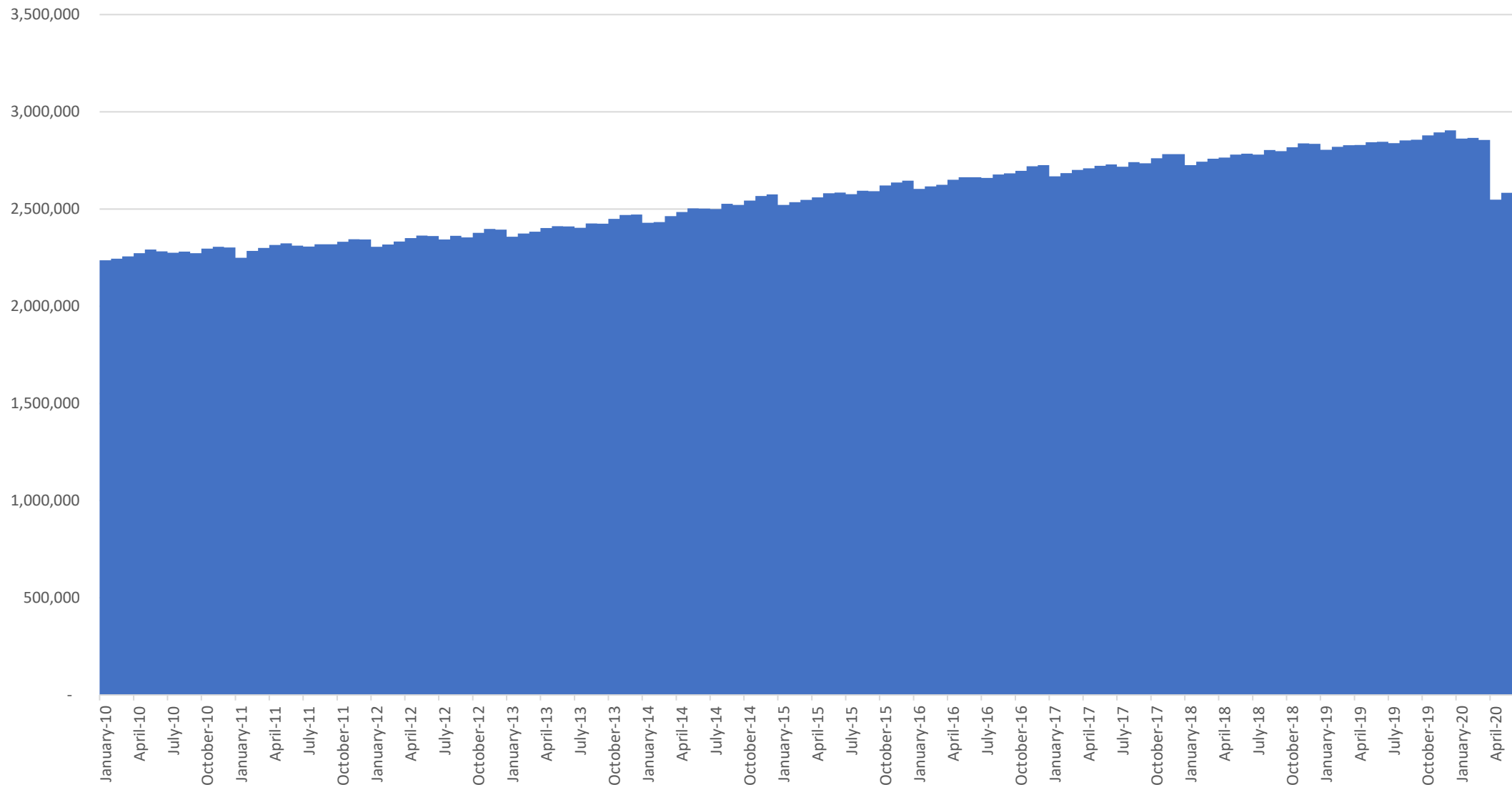
Chart 2. Total nonfarm and selected industry supersector employment, over-the-year percent change, United States and the Atlanta metropolitan area, April 2020



Source: U.S. Bureau of Labor Statistics.

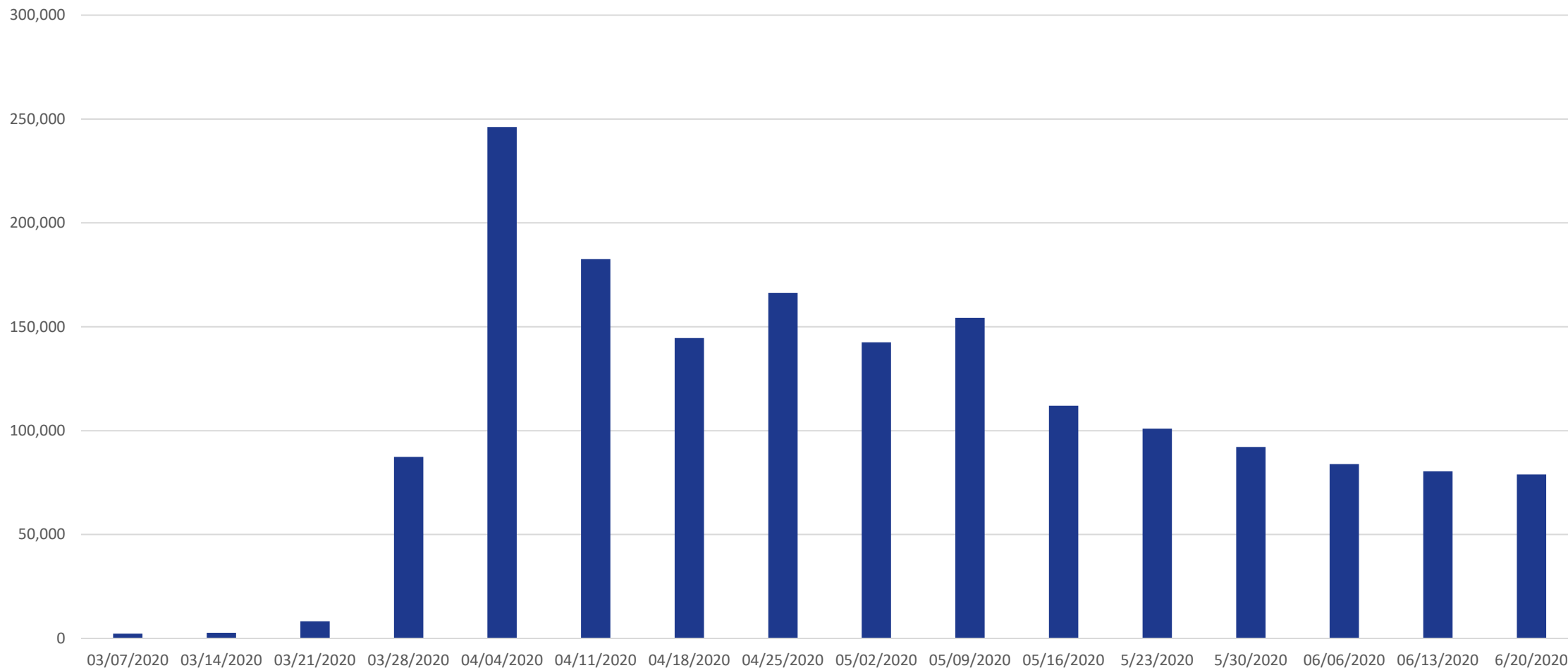
Five years of Jobs Gains Wiped Out...

Metro Atlanta: Total Employment - 2010 - Current



Layoffs are Declining...

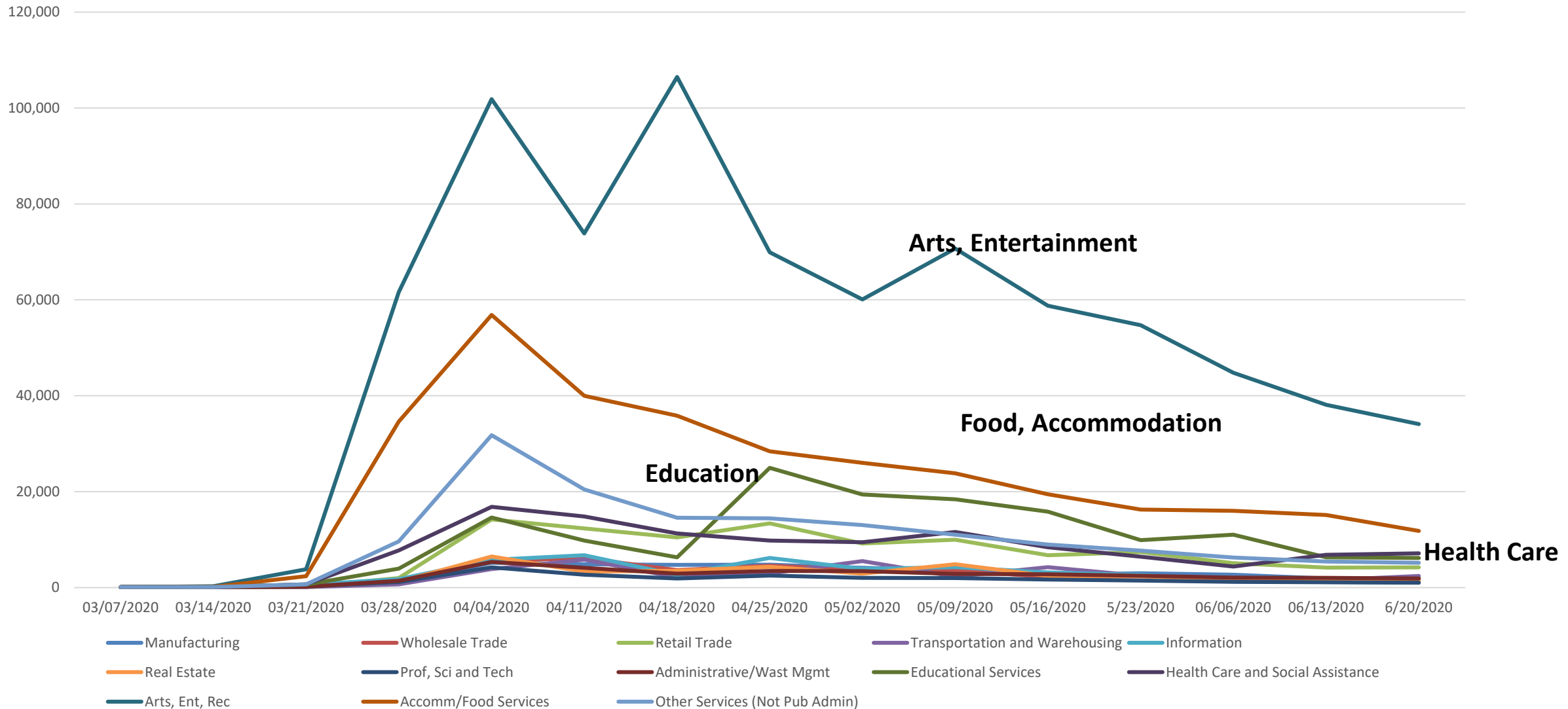
UI Claims



Source: GA DOL

Newly Unemployed Concentrated Where You Think They Are...

Initial Unemployment Insurance Claims by Industry

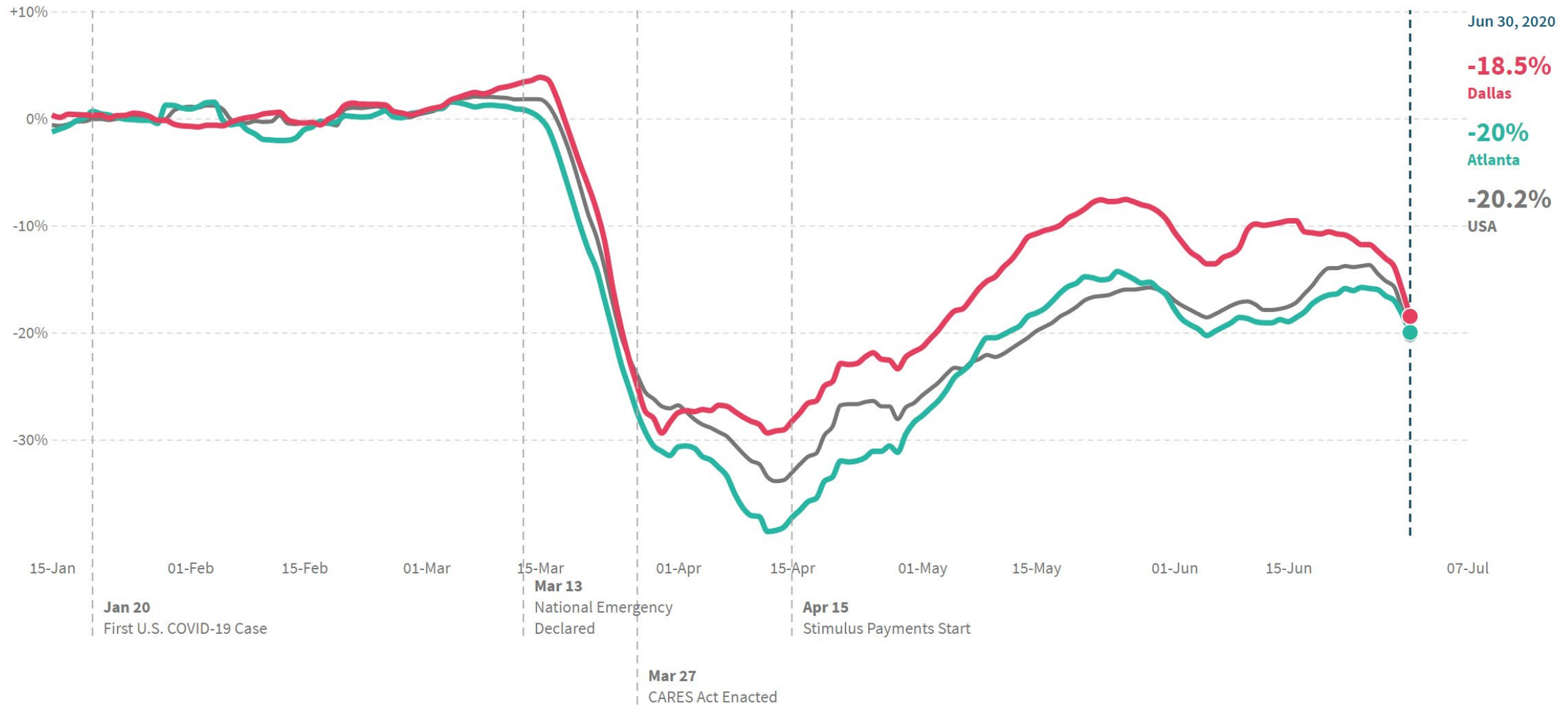


Source: GA DOL

Small Businesses Are Beginning To Close Again...

In **Atlanta**, as of June 30, 2020, the number of small businesses open decreased by **20%** compared to January 2020.

DOWNLOAD CHART 

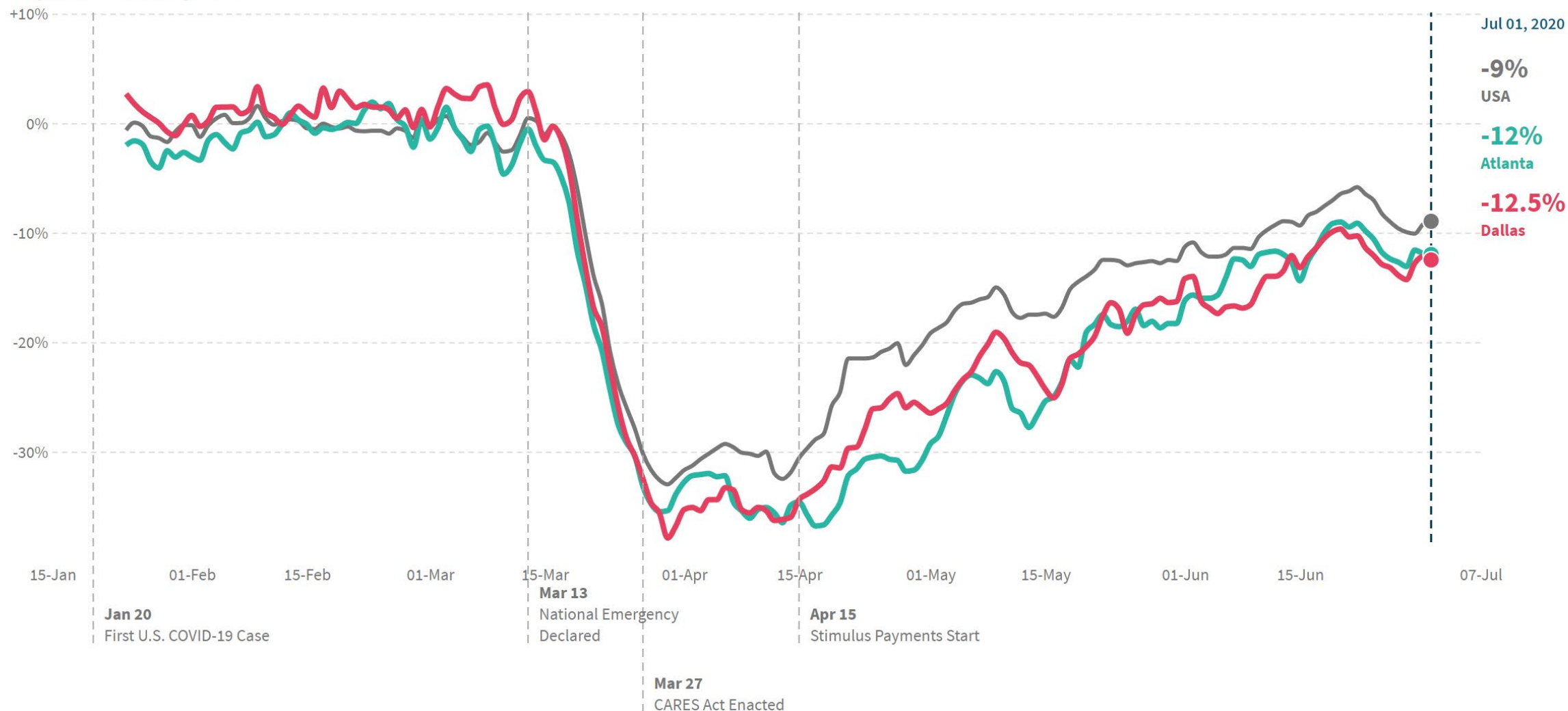


Source: Opportunity Insights (Womply)

Consumer Spending Down

In **Atlanta**, as of July 01 2020, total spending by all consumers decreased by **12%** compared to January 2020.

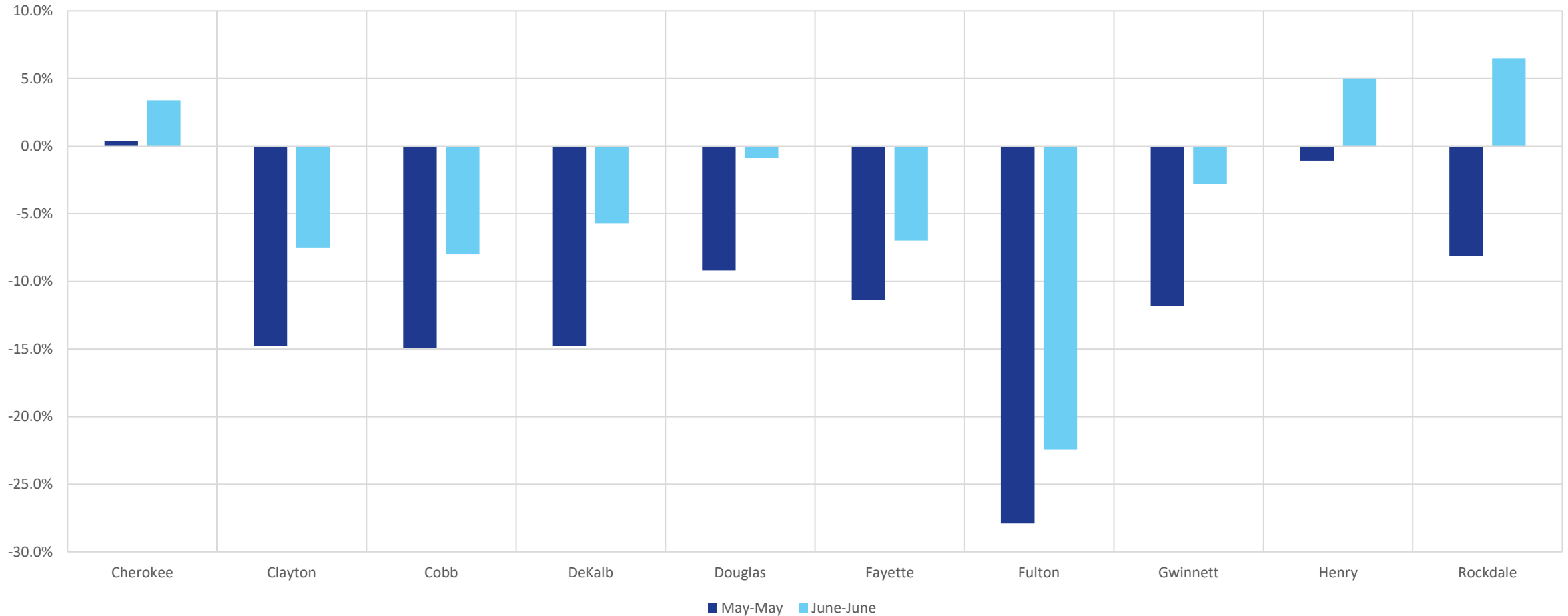
DOWNLOAD CHART 



Source: Opportunity Insights (Affinity Solutions)

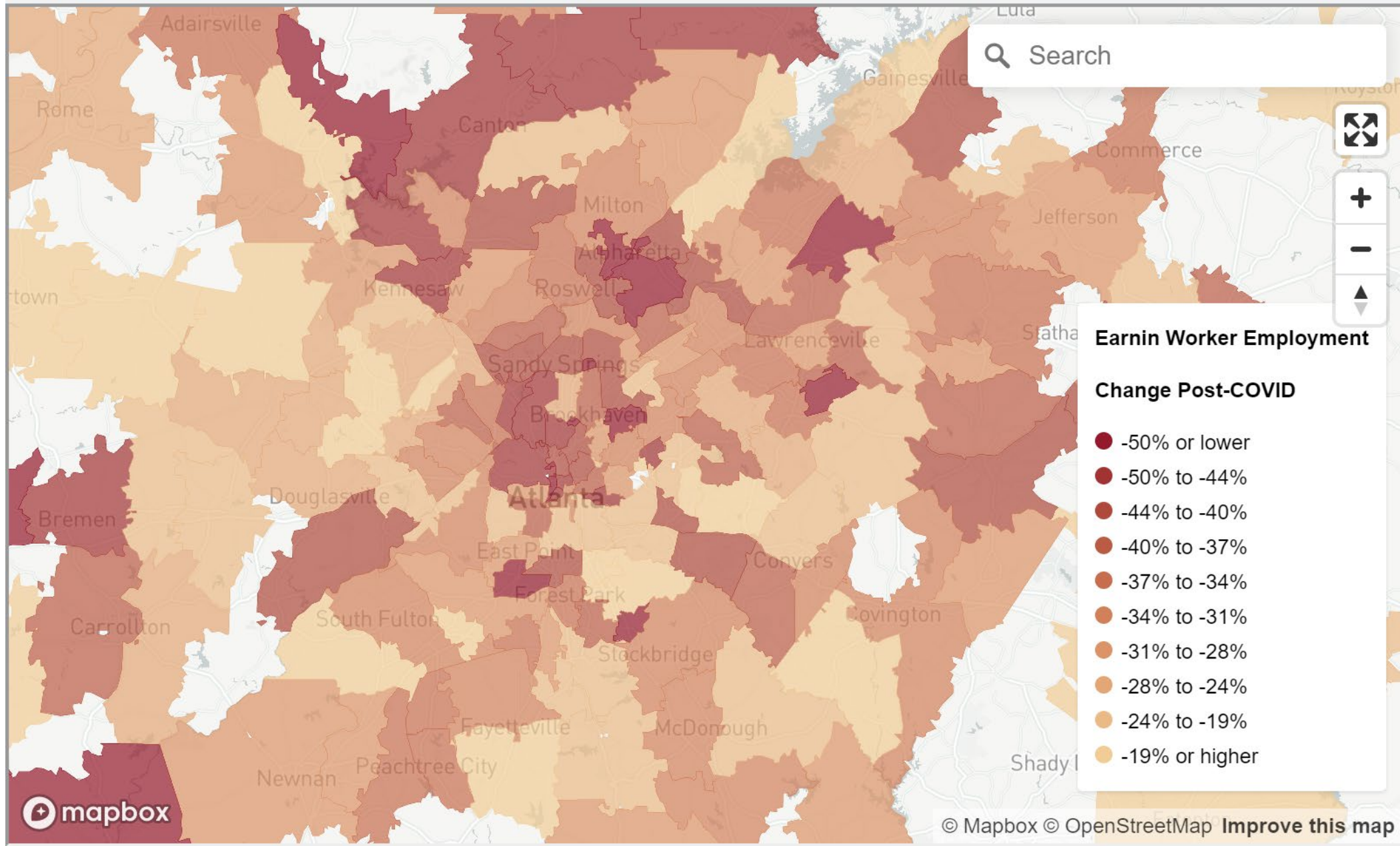
Local Government Revenues Taking A Hit

Year over Year Percent Change in Sales Tax Distributions



Source: Georgia Department of Revenue, "Sales Tax Commodity Report," Accessed July 7, 2020, via georgiadata.org

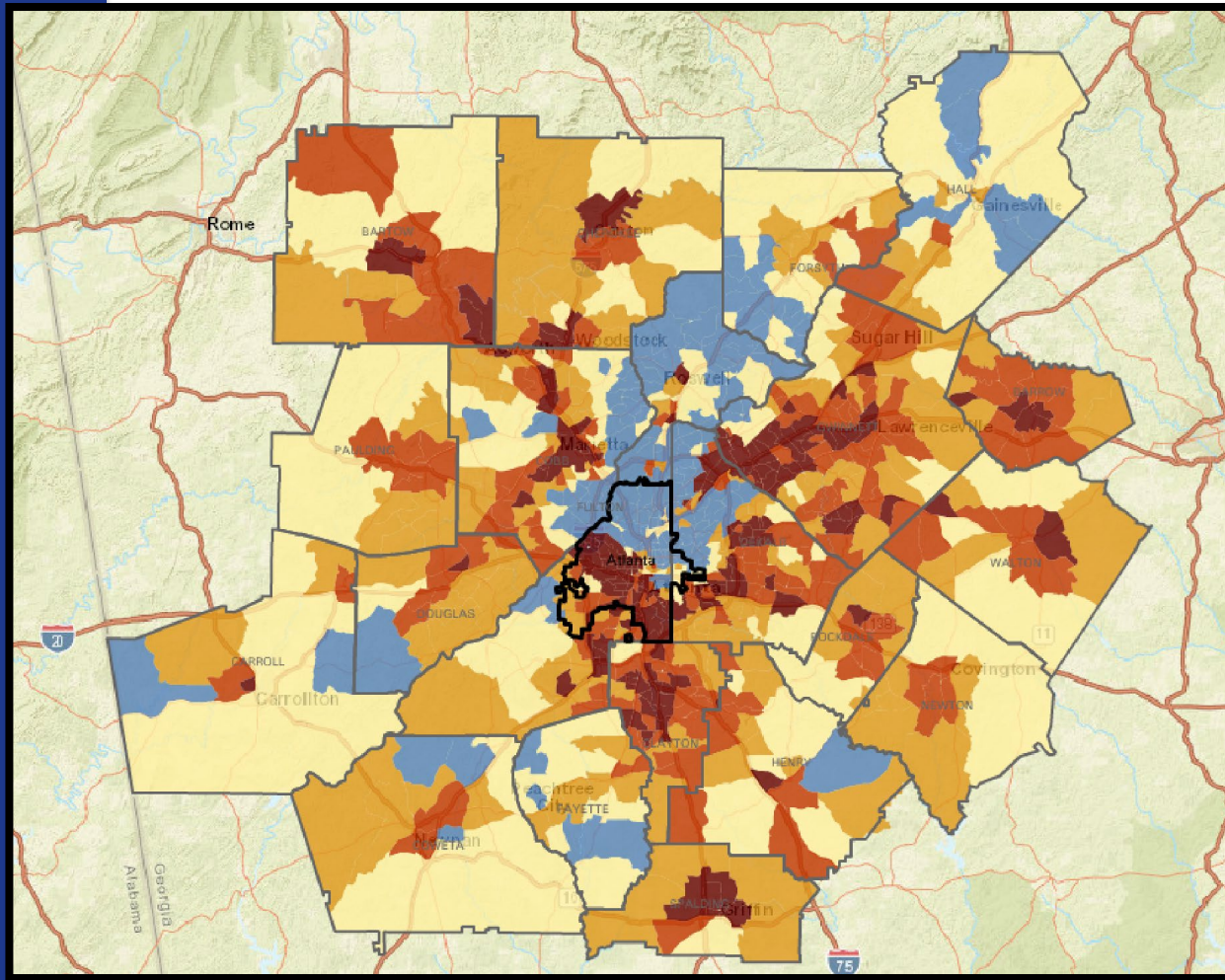
Low-Income Employment Declining Everywhere



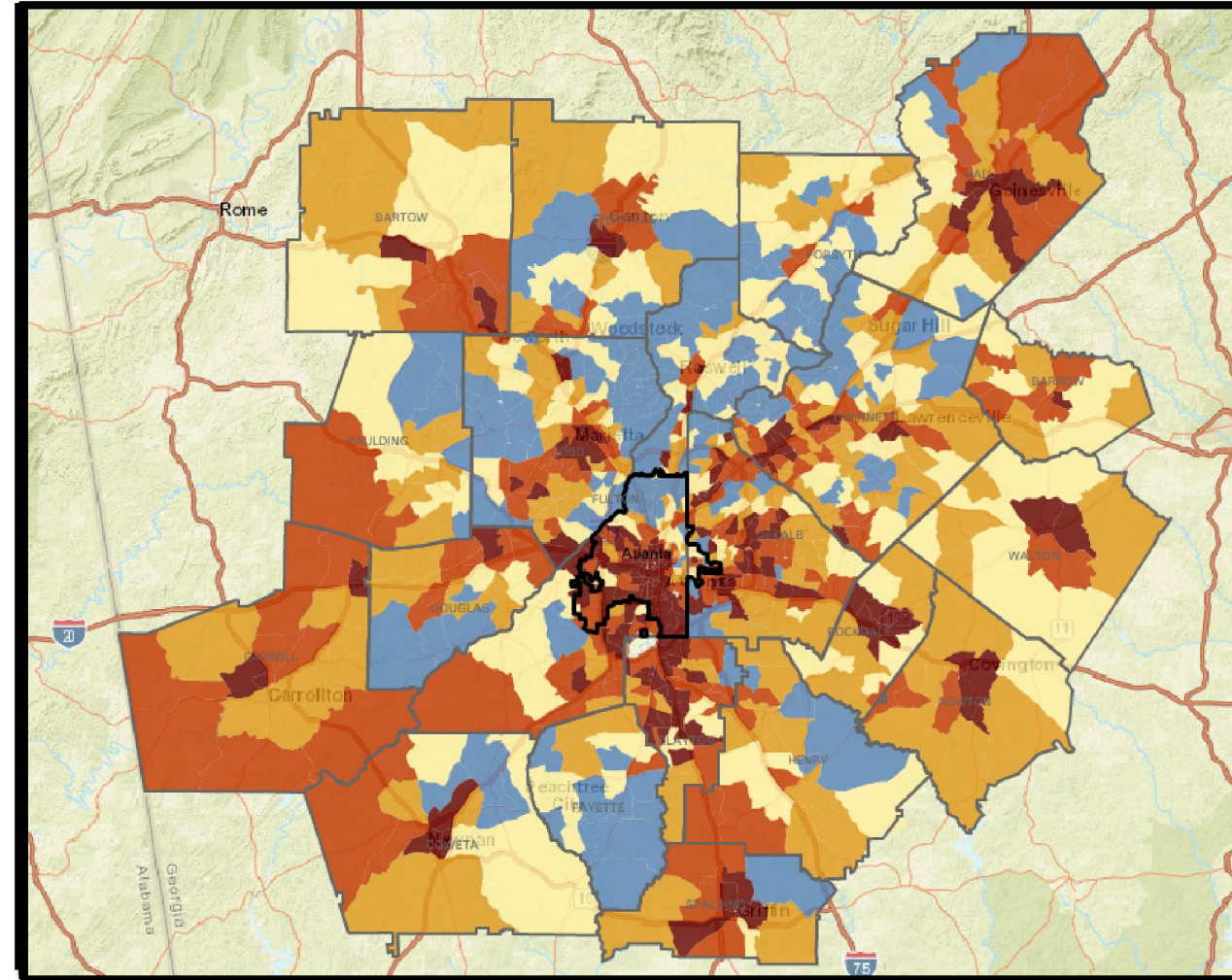
Source: Opportunity
Insights (Affinity
Solutions)

Threatened Workers Spatial Disparities

Percent of Threatened Workers



Percent in Poverty

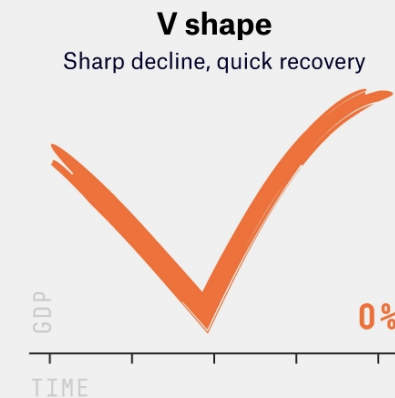
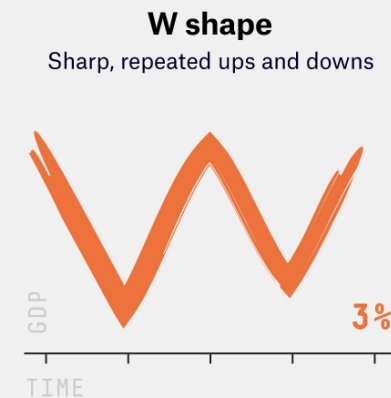
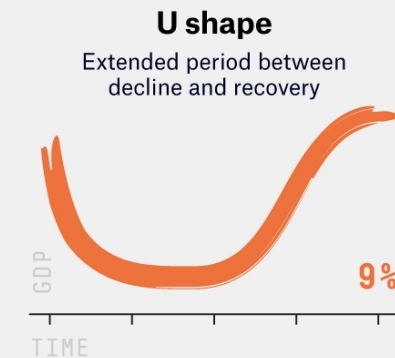
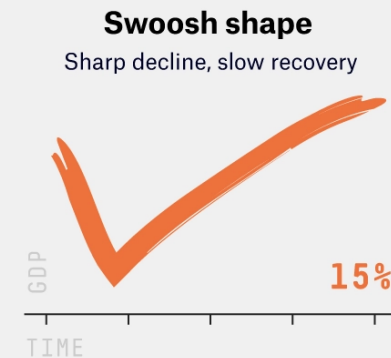
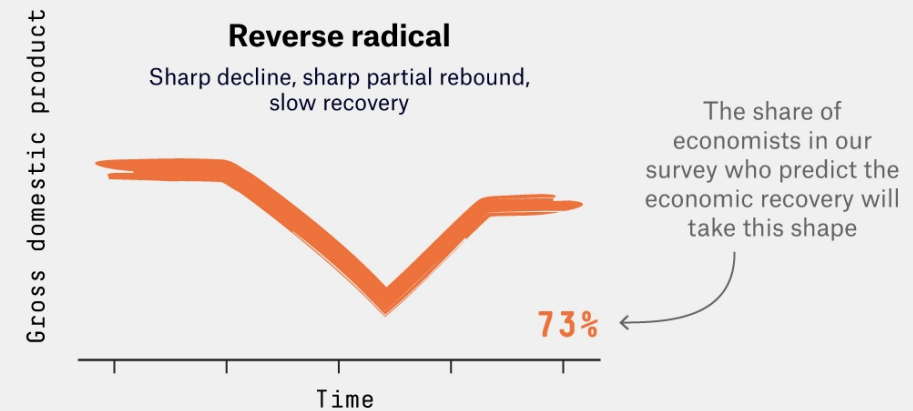


What's The Prognosis?

Consensus?

Economists in our survey expect an uneven recovery

Expert predictions for the shape of the U.S. economic recovery



Atlanta MPO Economic Outlook

Employment

(in Thousands, 2020 Q1-Q4)

Gross Domestic Product

(Percent change, Peak 2020 Q2)

Disposable Personal Income

(in Bil of Current \$s, 2020 Q1-Q4)

Mild case Scenario

500.4
jobs lost

-12.5%
quarterly

-\$26.5
income lost

Severe case Scenario

526.8
jobs lost

-11.8%
quarterly

-\$27.7
income lost

Critical case Scenario

538.4
jobs lost

-13.9%
quarterly

-\$28.3
income lost

Anything Else?

Summing Up

Other things we're hearing and thinking about:

- Food Insecurity is about to become an even bigger now that the school year is over
- Majority of licensed child-care centers have temporarily closed
- Recent study showed a 3.5 to 5 percentage point drop in reading and math proficiency due to school closures/distance learning
- We've seen a SMALL spike in people unable to pay rents. How much worse will that get once eviction moratoria are lifted?
- Transportation is harder to access, so the new essential workforce has additional struggles with accessing the things they need
- A little more than 50% of Arts organizations (small sample) report concerns of being able to survive the economic downturn.

Perspectives About Five Years from Now...

“The shift towards remote work can potentially help better-educated senior citizens the most, enabling them to perform many jobs from the comfort of their homes or to participate in the so-called gig economy.”

- Mauro Guillén, Professor, Wharton School; Author, 2030: How Today's Biggest Trends Will Collide and Reshape the Future of Everything

“In five years, many of us will still be working from office settings, but we will do so less often, with trepidation”

- Melissa Gregg, Chief technologist, User Experience and Sustainability for Client Computing, Intel

“This is the time to build a new social contract between business and society, and to rebuild the economy in a more inclusive, equitable, and regenerative way.”

- Anthea Kelsick, Co-CEO, B Lab US and Canada

“Be prepared to see entirely new planned communities pop up that are built with the intention of balancing the demand for open space with the need for urban amenities.”

- Steve Nygren, Founder and CEO, Serenbe

“The pandemic (hopefully) has given us urgency to value and protect low-wage work in America in a whole new way.”

- Ai-Jen Poo, Director, National Domestic Workers Alliance

“The next five years need to be a time of drastic reengineering of our systems and structures to eliminate health disparities and know that in crisis we have the ability to ensure that resources and care are allocated equitably.”

- Esther Choo, Associate Professor, Center for Policy & Research in Emergency Medicine, Oregon Health & Science University

<https://qz.com/is/new-normal/>

Explore For Yourself!

<https://neighborhoodnexus.org/covid19/>

www.33n.atlantaregional.com



MAPS & DATA

SERVICES

ABOUT US

DONATE

Tell your story.
With data.
Easily.

Neighborhood Nexus empowers mission-driven organizations to more easily and confidently ask the right questions, use the best data, tell compelling stories, and make informed decisions.



COVID-19

The current health and economic crisis is unprecedented. We're focused on actionable data and insights to guide your response. [View our COVID-19 resources here.](#)



Finding Meaning at 33.7°N

Powered by [ARC](#) and [neighborhood nexus](#)

Regional Snapshot

Special Features

Weekly Features

The Quarter

Metro Atlanta Speaks

County Dashboards

COVID-19 weekly reader: May 29, 2020



COVID-19 Weekly Report
week ending May 29, 2020

The Atlanta Regional Commission's COVID-19 Weekly Report provides the latest data about the state of the novel coronavirus in the Atlanta area. Information comes from the Georgia Department of Public Health, Georgia Labor Market Explorer, and Google COVID-19 Mobility Reports, among others. The report focuses on ARC's member governments but also examines the broader metro area as appropriate.

Key Insights

Search 33°n

Search ...

Most Popular Posts

COVID-19 weekly reader: May 29, 2020
503 views

Friday Factday: Social Distancing- Directions and Distinctions
371 views