

2020 Census Brief

The Last Decade In Numbers

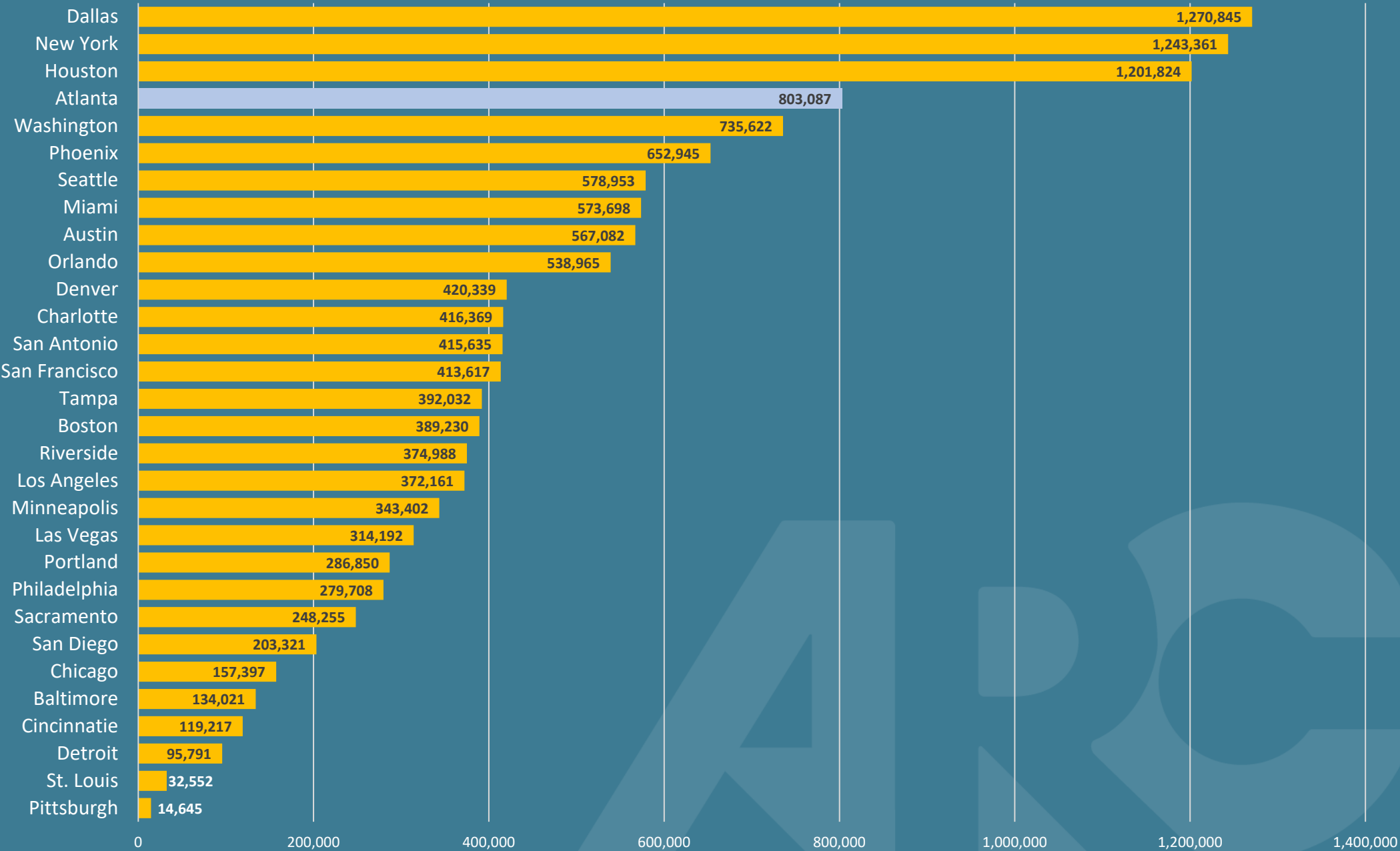
Mike Carnathan

Group Director, Research & Analytics

mcarnathan@atlantaregional.org

Metro Atlanta In Context: Population Change 2010-2020

Dallas	7,637,387
New York	20,140,470
Houston	7,122,240
Atlanta	6,089,815
Washington	6,385,162
Phoenix	4,845,832
Seattle	4,018,762
Miami	6,138,333
Austin	2,283,371
Orlando	2,673,376
Denver	2,963,821
Charlotte	2,660,329
San Antonio	2,558,143
San Francisco	4,749,008
Tampa	3,175,275
Boston	4,941,632
Riverside	4,599,839
Los Angeles	13,200,998
Minneapolis	3,690,261
Las Vegas	2,265,461
Portland	2,512,859
Philadelphia	6,245,051
Sacramento	2,397,382
San Diego	3,298,634
Chicago	9,618,502
Baltimore	2,844,510
Cincinnati	2,256,884
Detroit	4,392,041
St. Louis	2,820,253
Pittsburgh	2,370,930

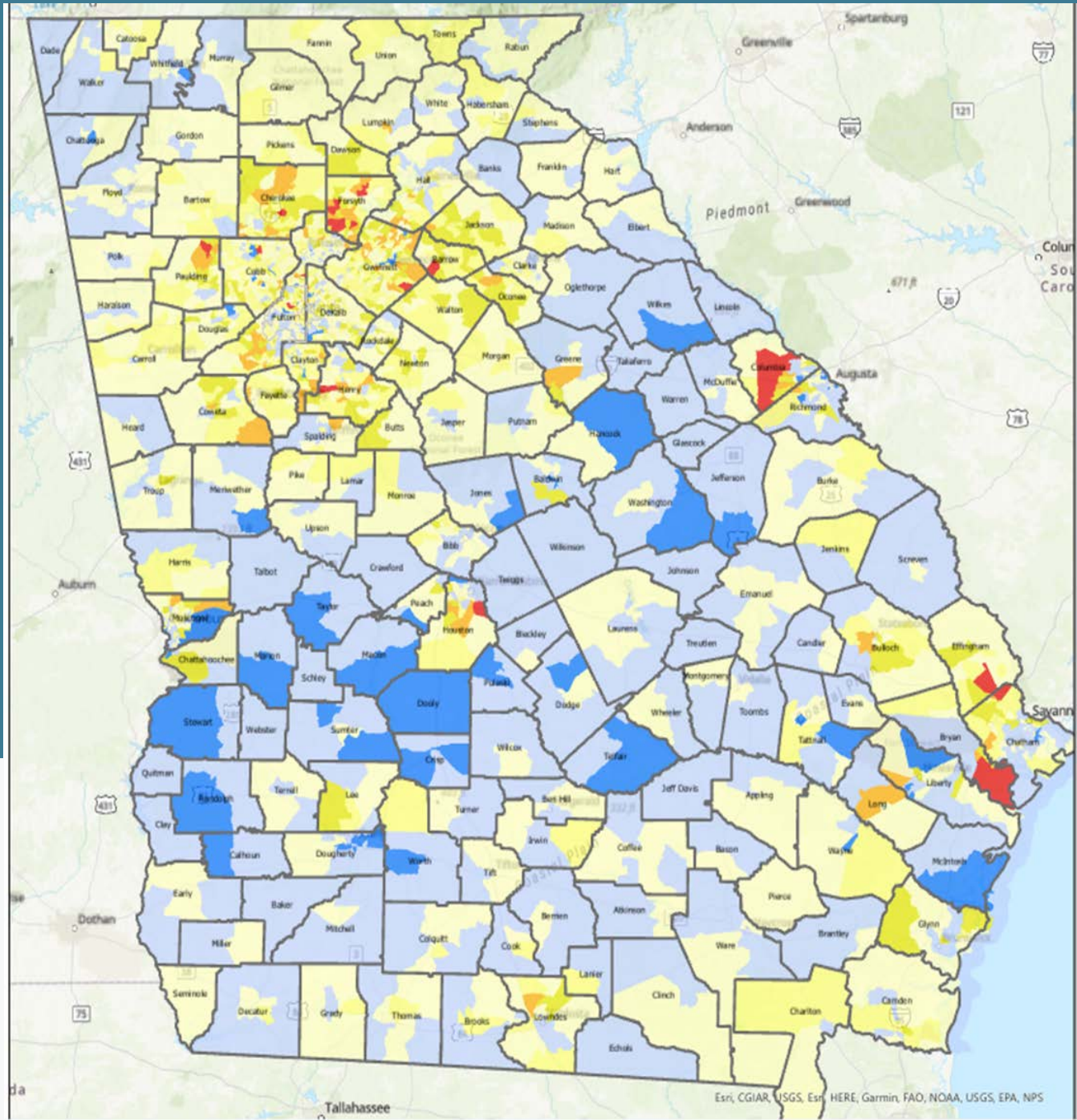
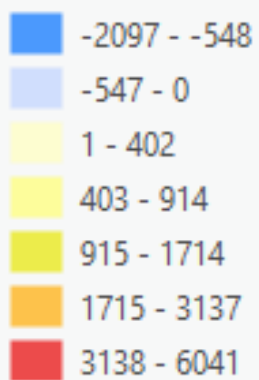


A Decade of Change: By The Numbers

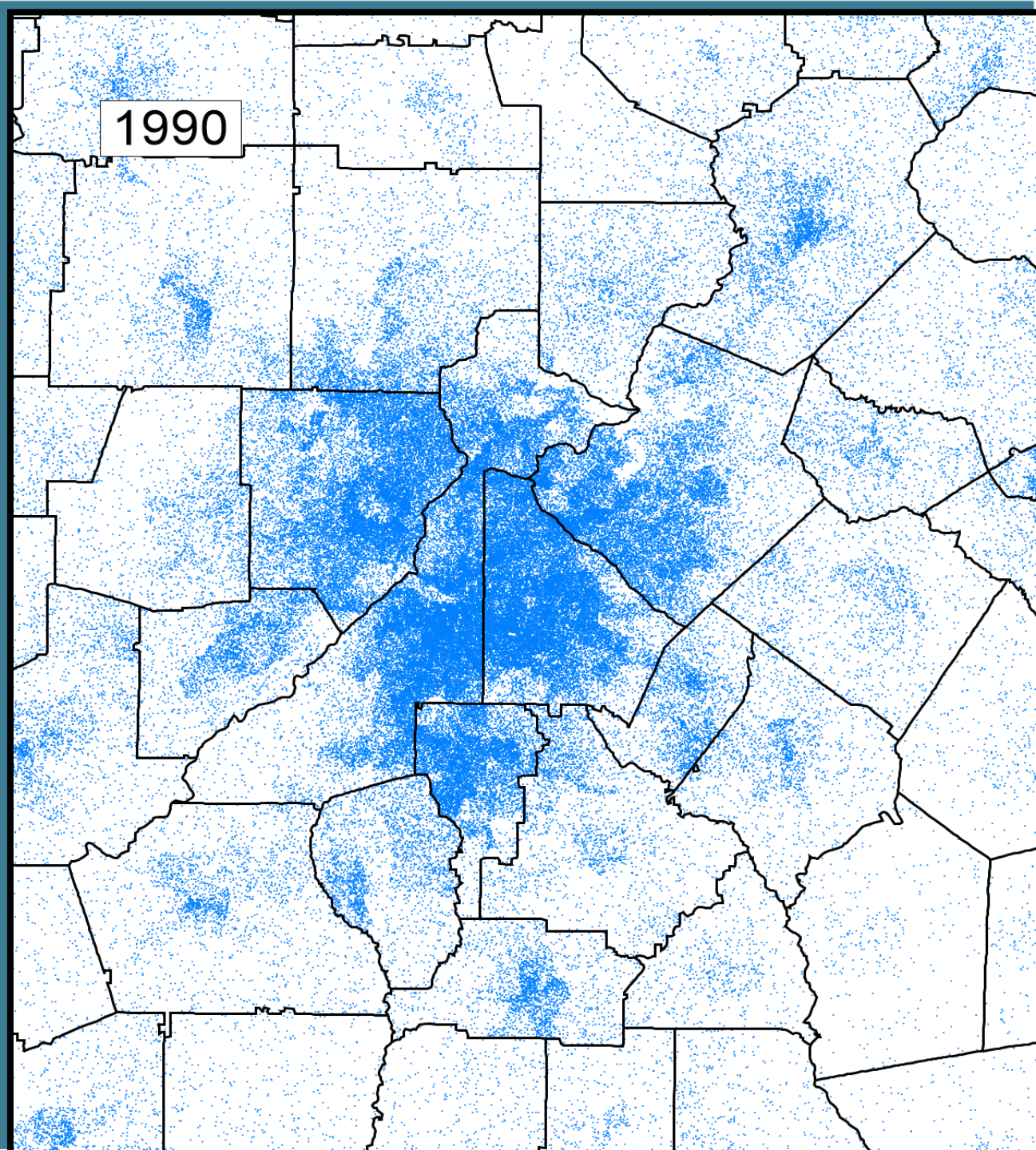
Jurisdiction	Total Population, 2020	Total Population, 2010	Numeric Change	Percent Change
11-County Region	4,967,514	4,283,261	684,253	16.0%
Cherokee County	266,620	214,346	52,274	24.4%
Clayton County	297,595	259,424	38,171	14.7%
Cobb County	766,149	688,078	78,071	11.3%
DeKalb County	764,382	691,893	72,489	10.5%
Douglas County	144,237	132,403	11,834	8.9%
Fayette County	119,194	106,567	12,627	11.8%
Forsyth County	251,283	175,511	75,772	43.2%
Fulton County	1,066,710	920,581	146,129	15.9%
Gwinnett County	957,062	805,321	151,741	18.8%
Henry County	240,712	203,922	36,790	18.0%
Rockdale County	93,570	85,215	8,355	9.8%
COA	498,715	420,003	78,712	18.7%

Maps!

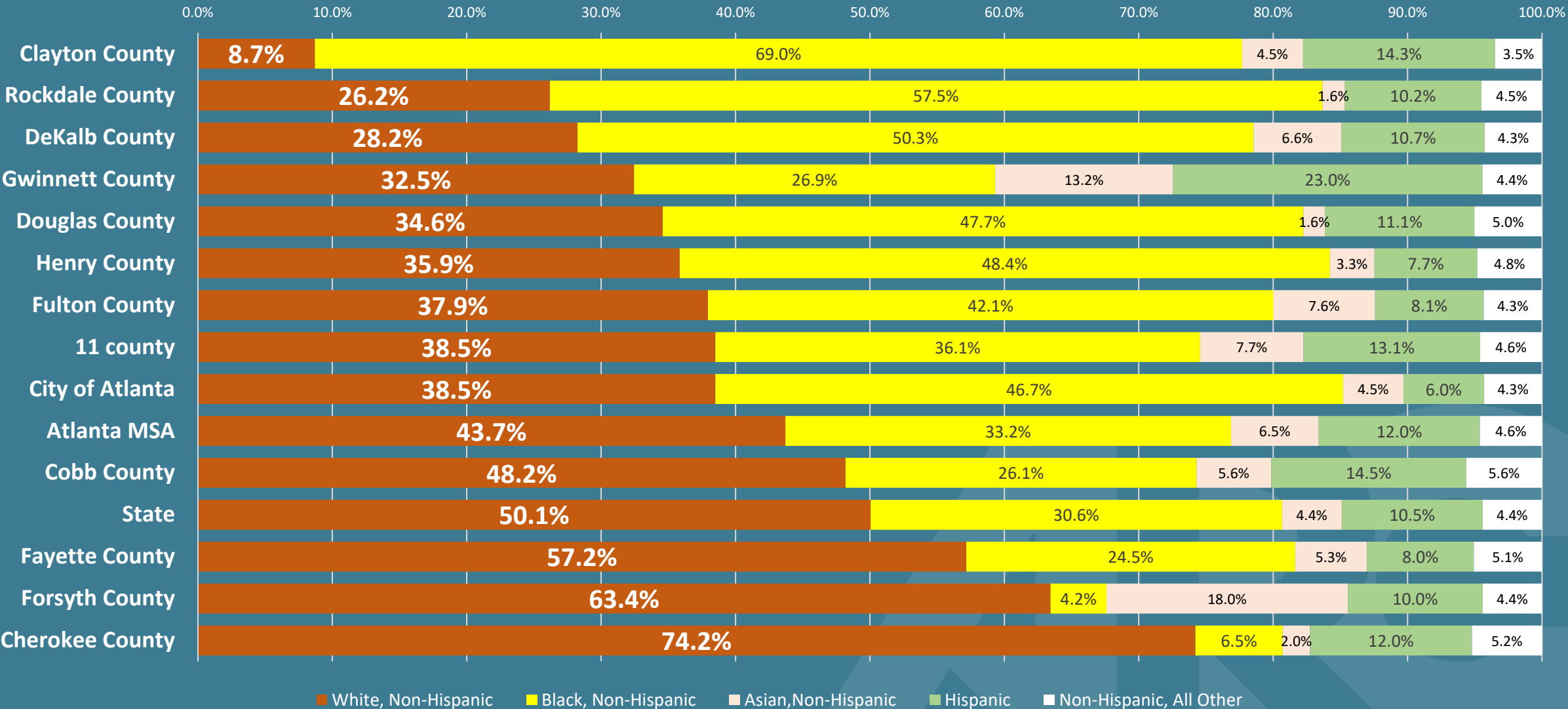
Statewide Context: Total Population Change, 2010-2020



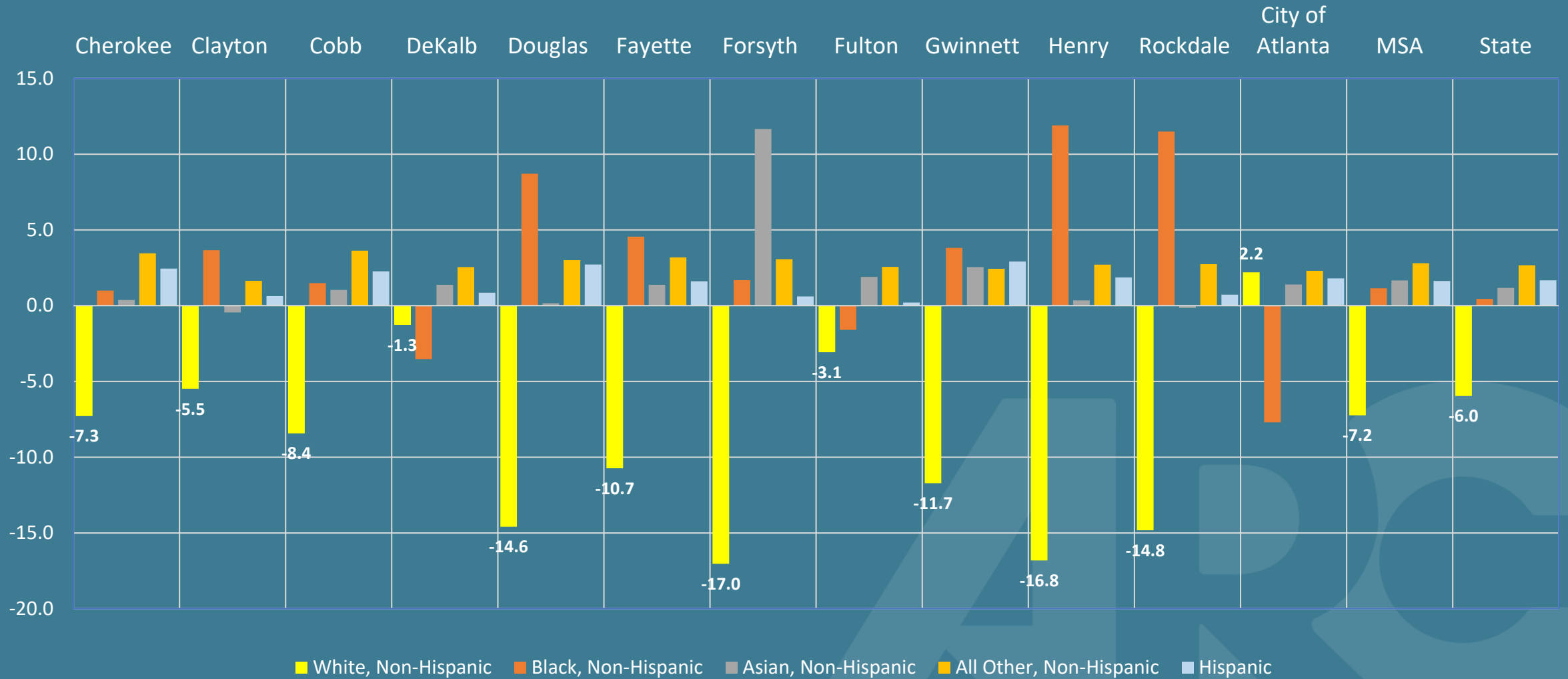
30 Years In A Blink Of An Eye



Composition of Us: Race & Ethnicity

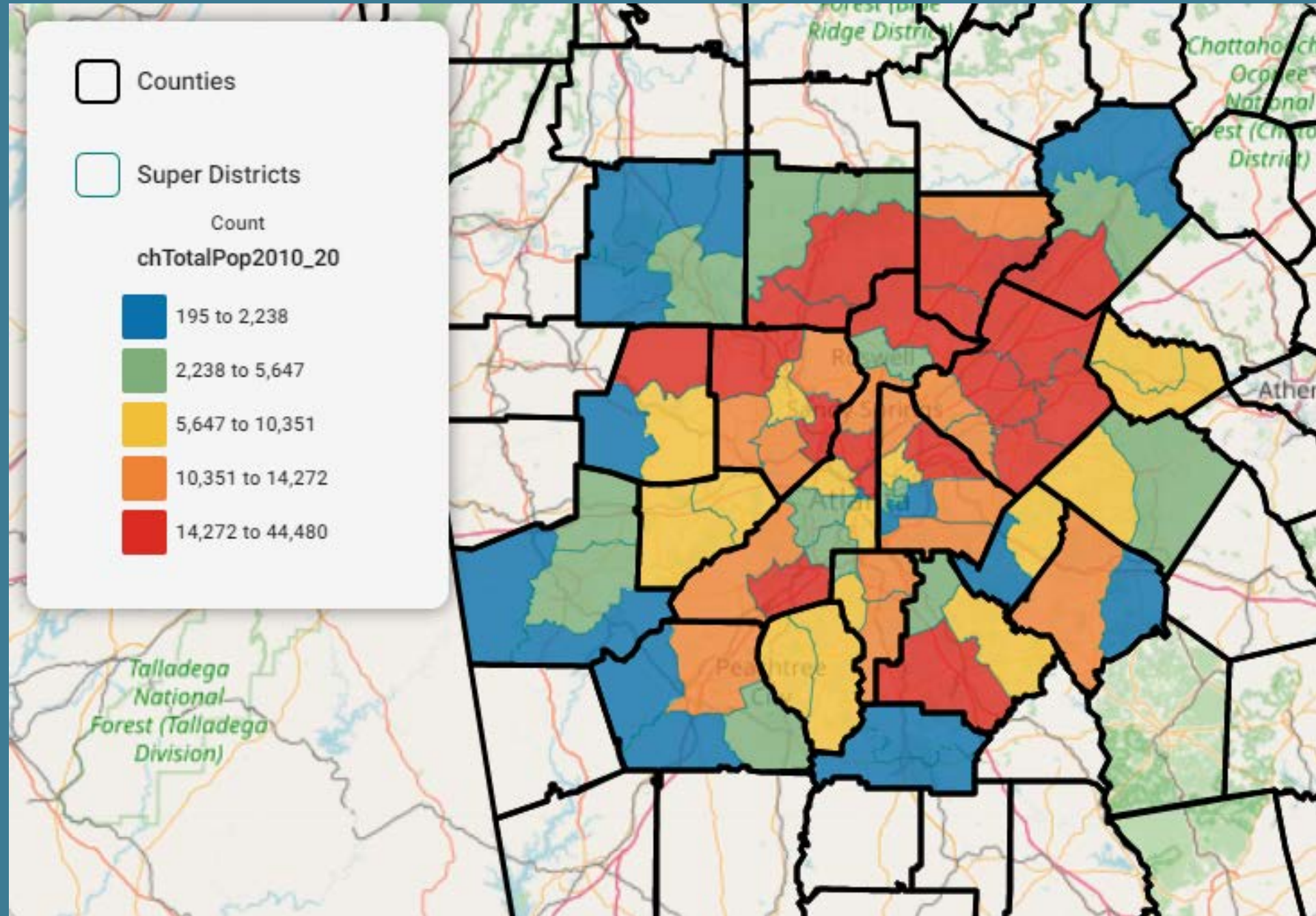


How That Composition Changed Over the Decade



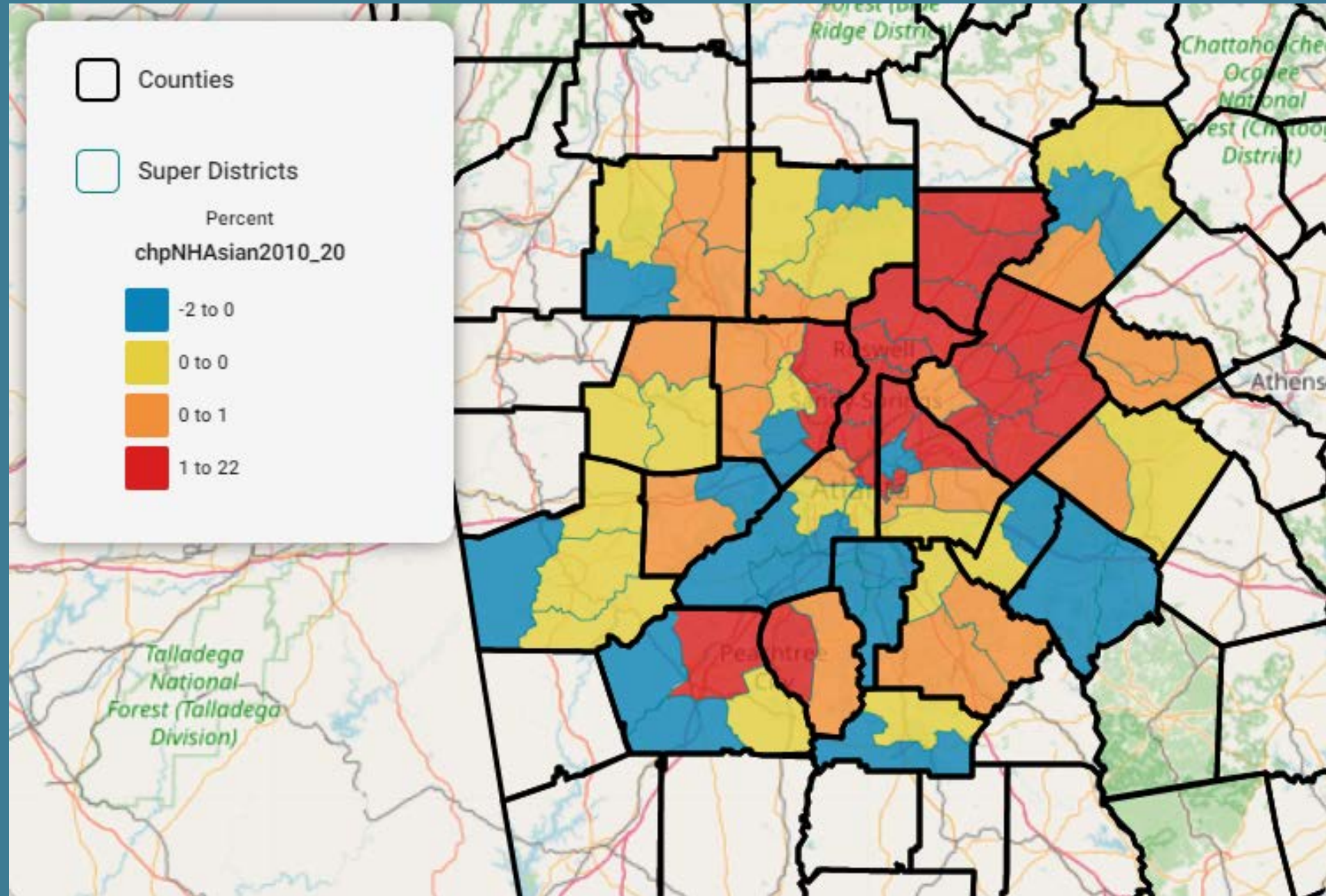
Maps!

Total Population
Change,
2010-2020



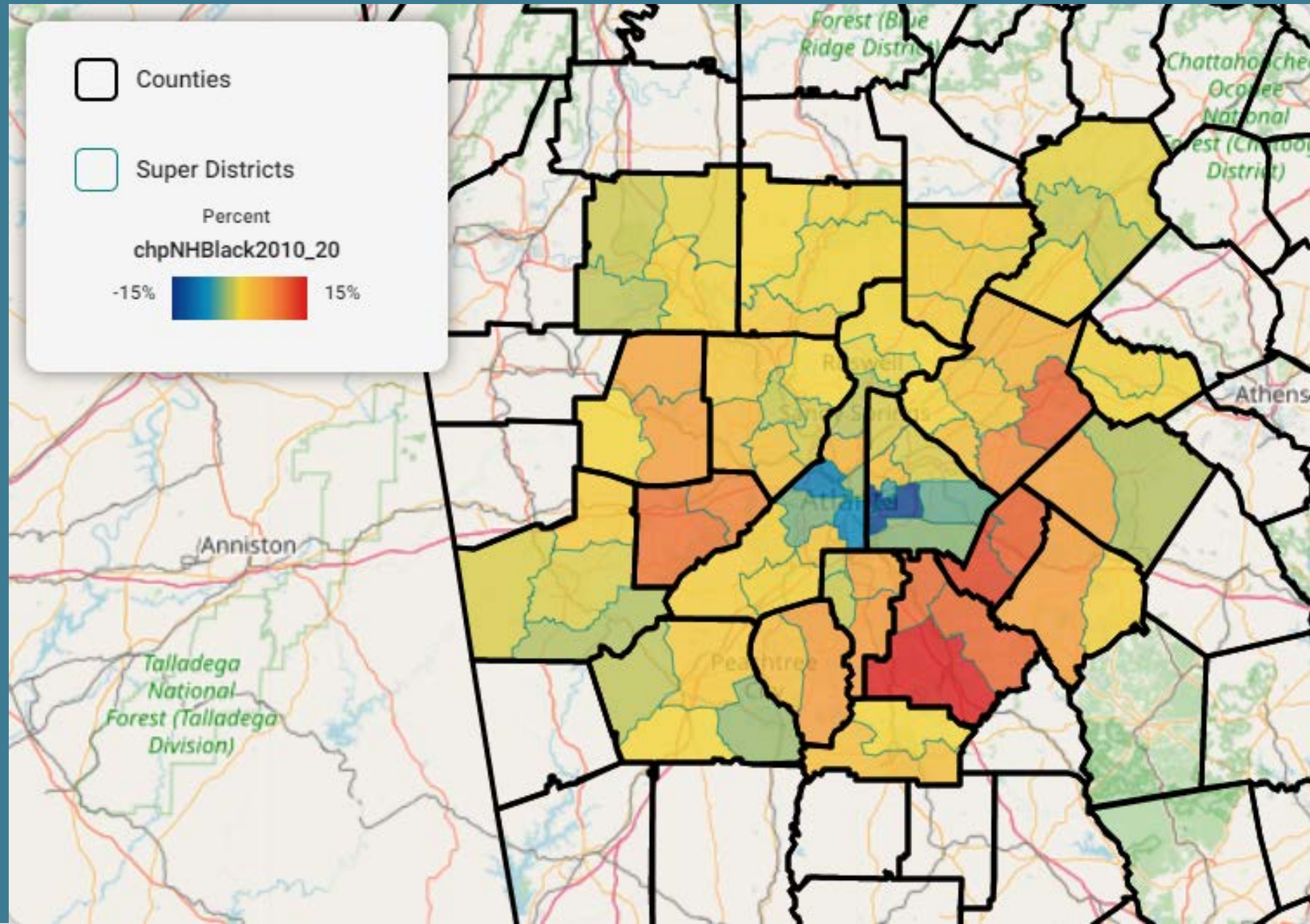
Maps!

Change in the %
of Asian
Populations,
2010-2020



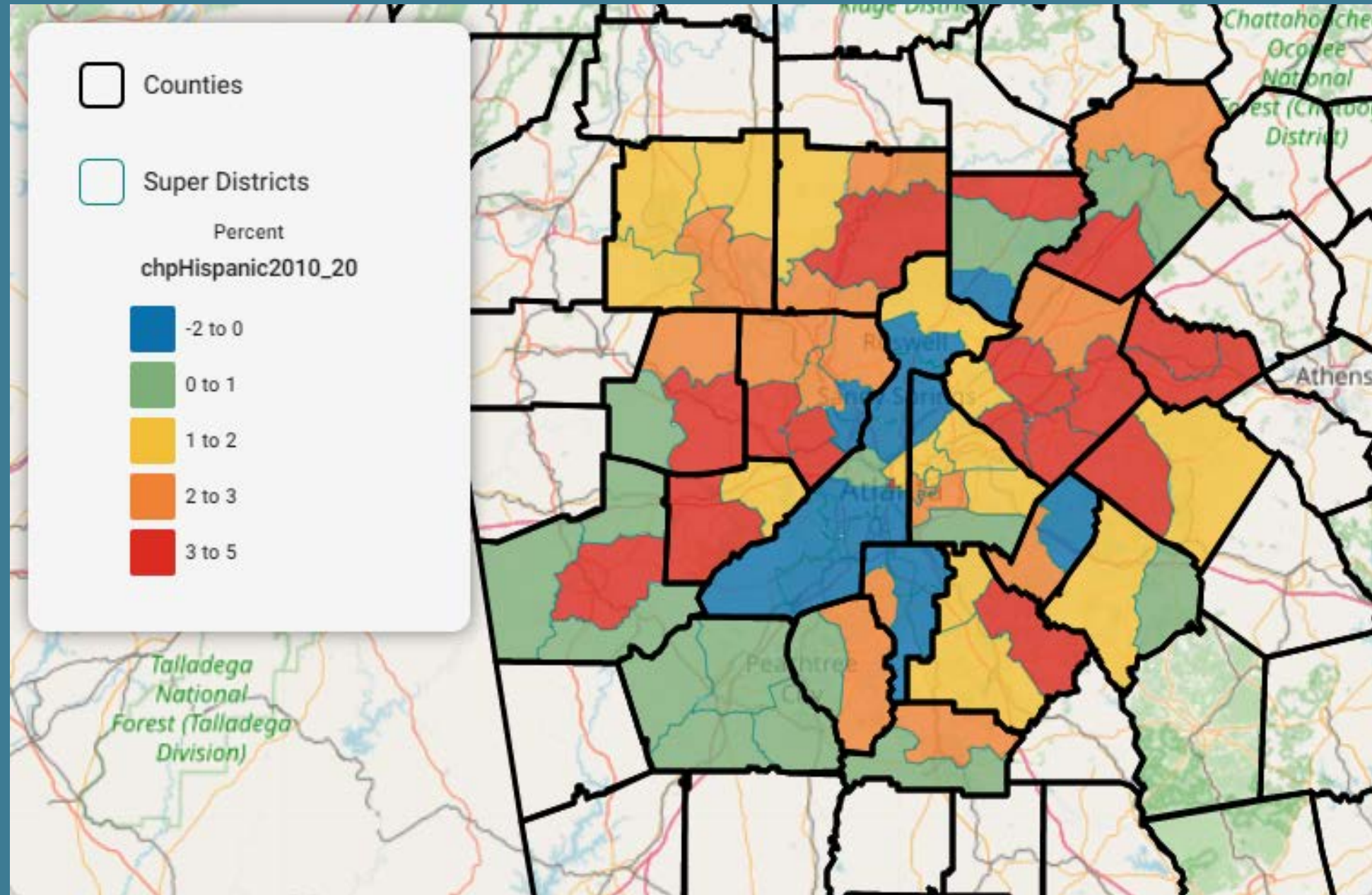
Maps!

Change in the %
of Black
Populations,
2010-2020



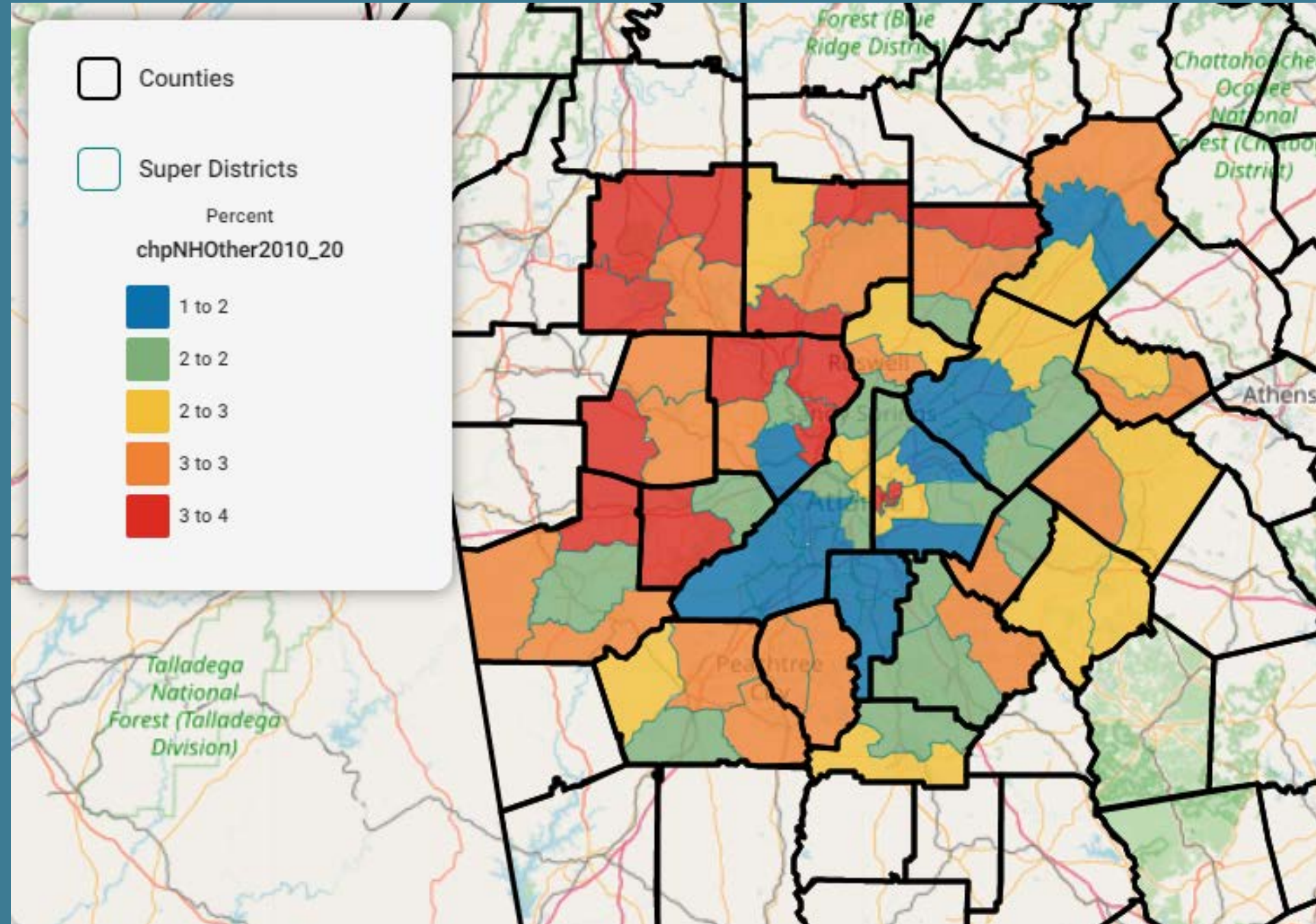
Maps!

Change in the %
of Hispanic
Populations,
2010-2020



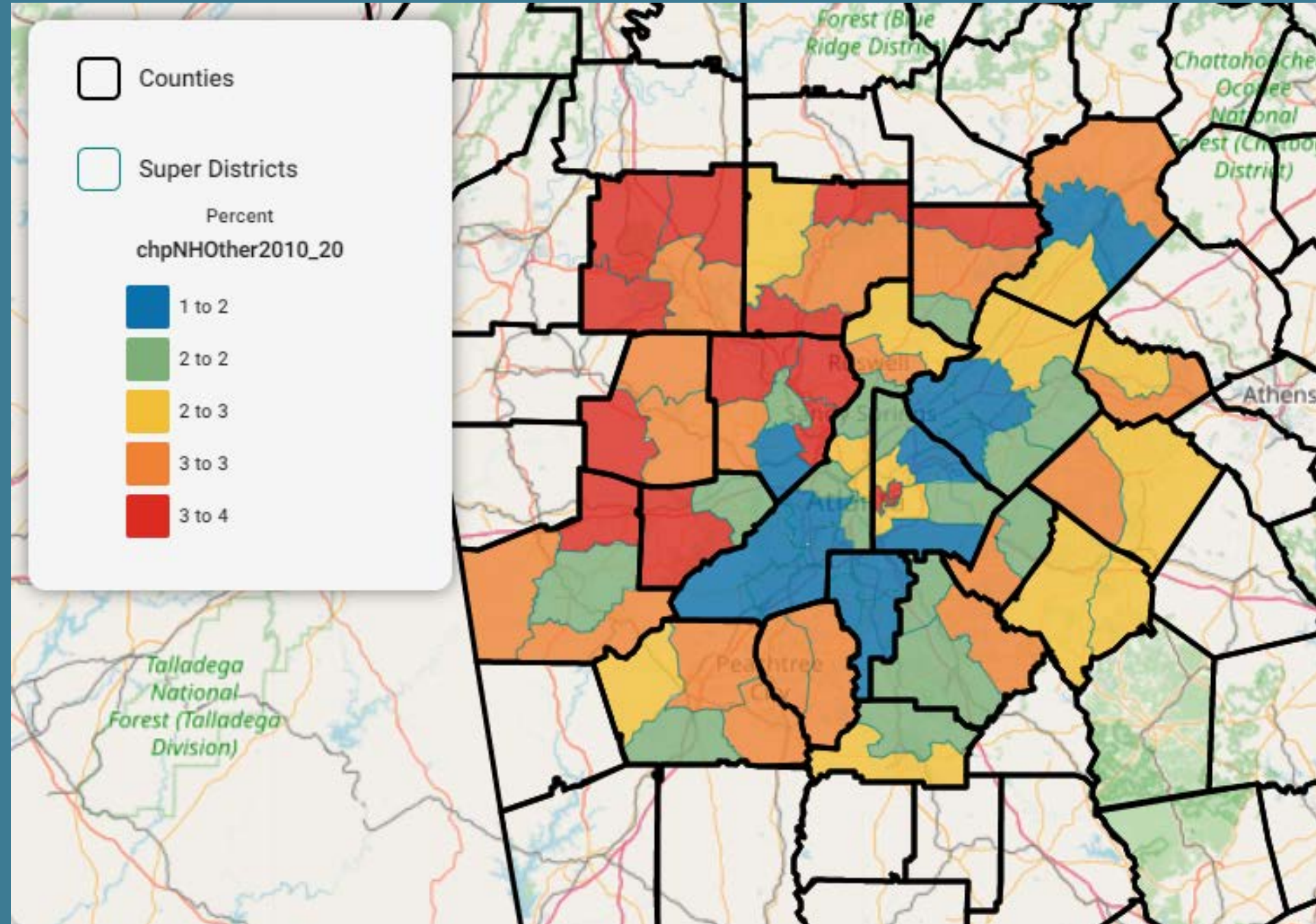
Maps!

Change in the %
of "Other Races"
Populations,
2010-2020



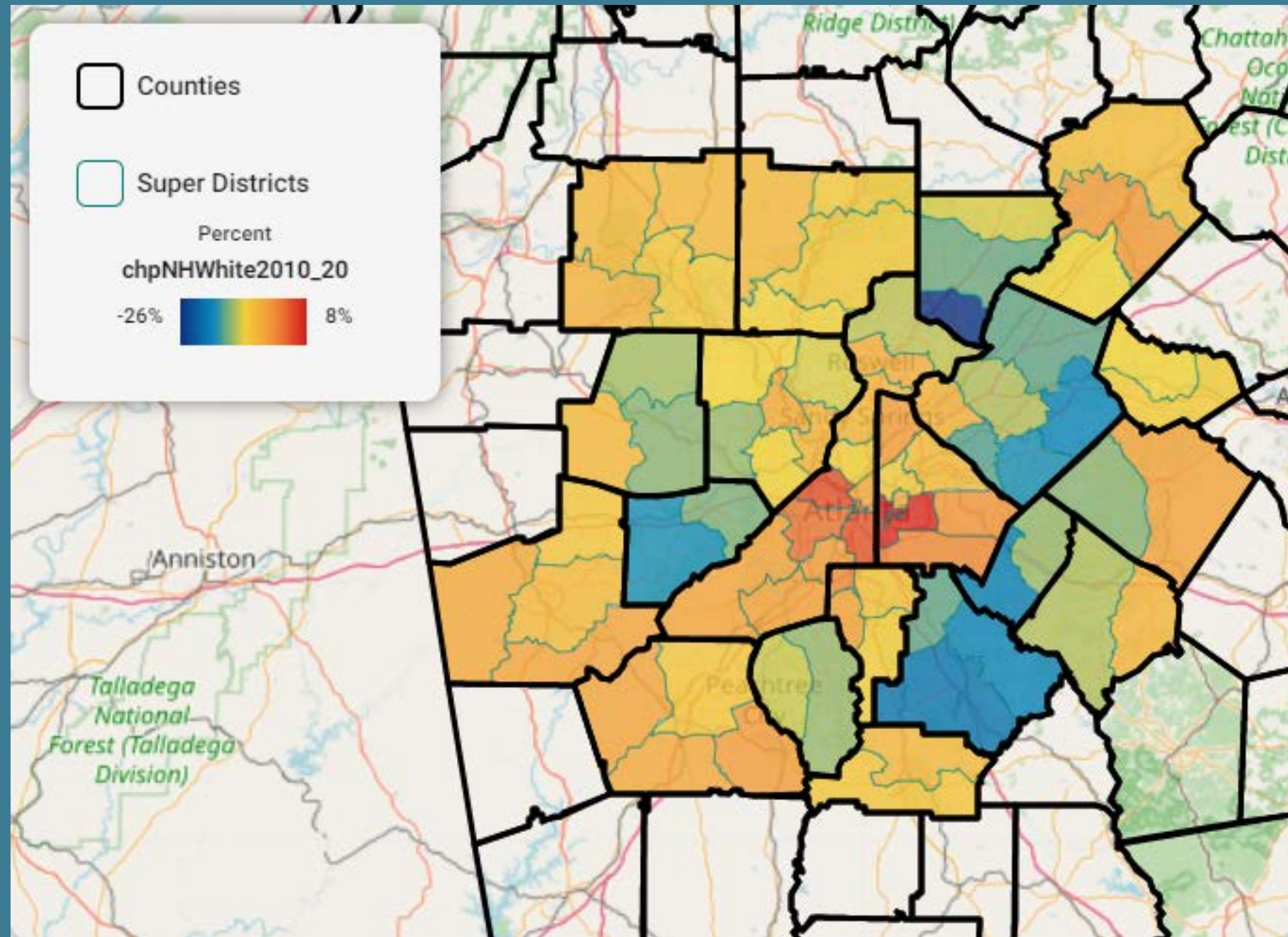
Maps!

Change in the %
of "Other Races"
Populations,
2010-2020



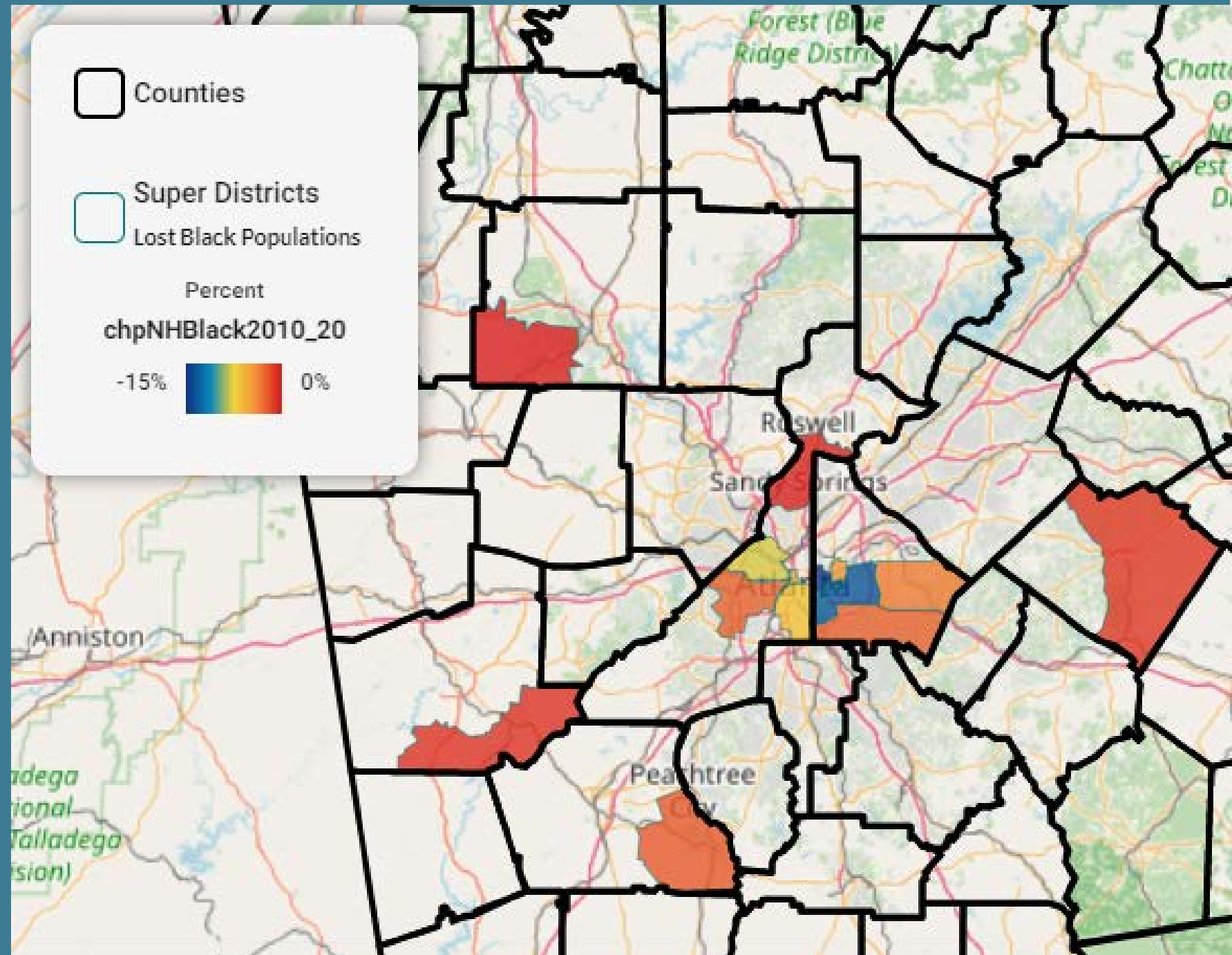
Maps!

Change in the %
of White
Populations,
2010-2020



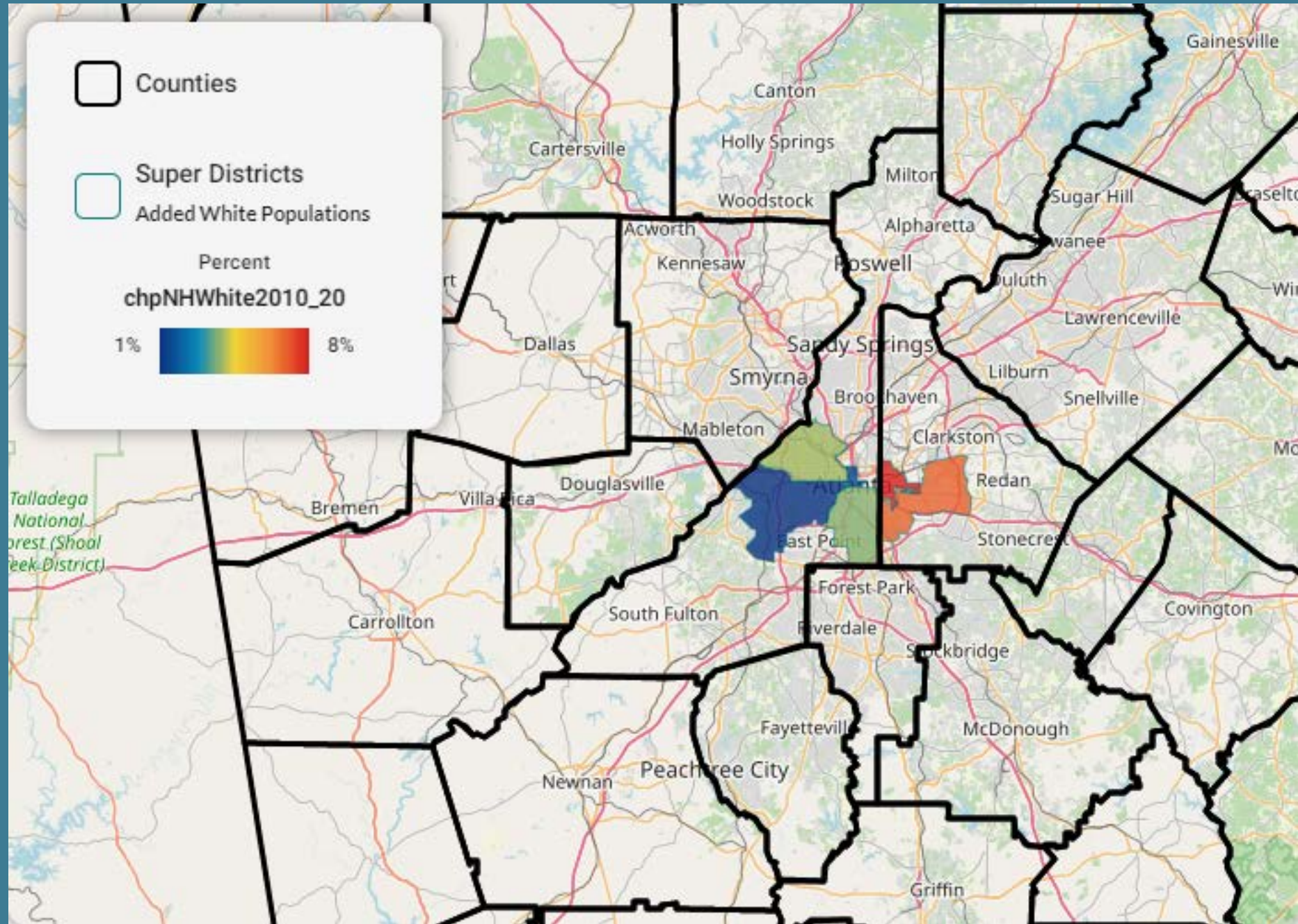
Maps!

Only Areas That
Experienced A
Decline in Share
of Black
Populations,
2010-2020



Maps!

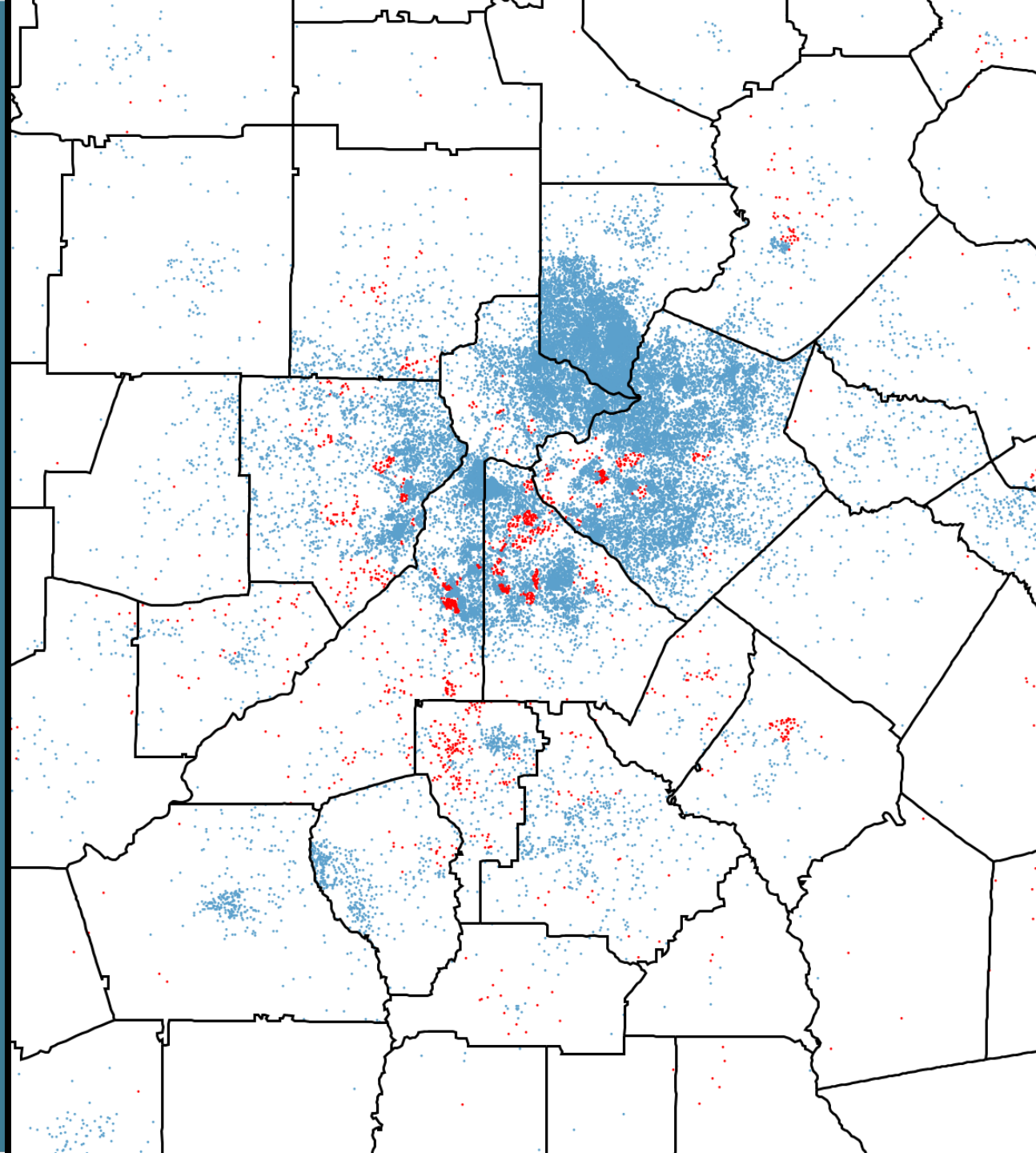
Only Areas That
Experienced A
Decline in Share
of White
Populations,
2010-2020



Change in Asian Populations, 2010-2020

Blue dot = Addition of 10 Persons

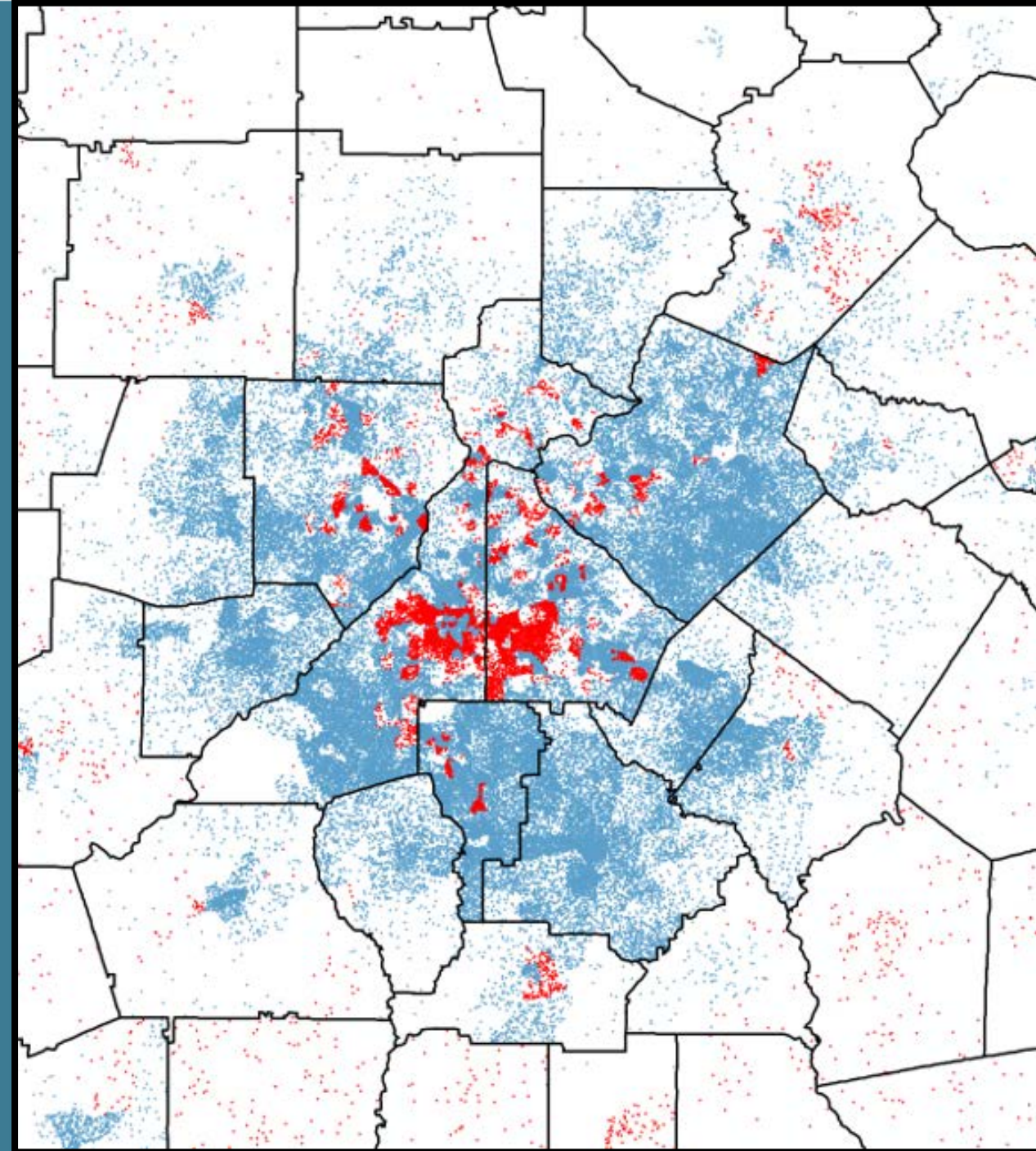
Red dot = Loss of 10 Persons



Change in Black Populations, 2010-2020

Blue dot = Addition of 10 Persons

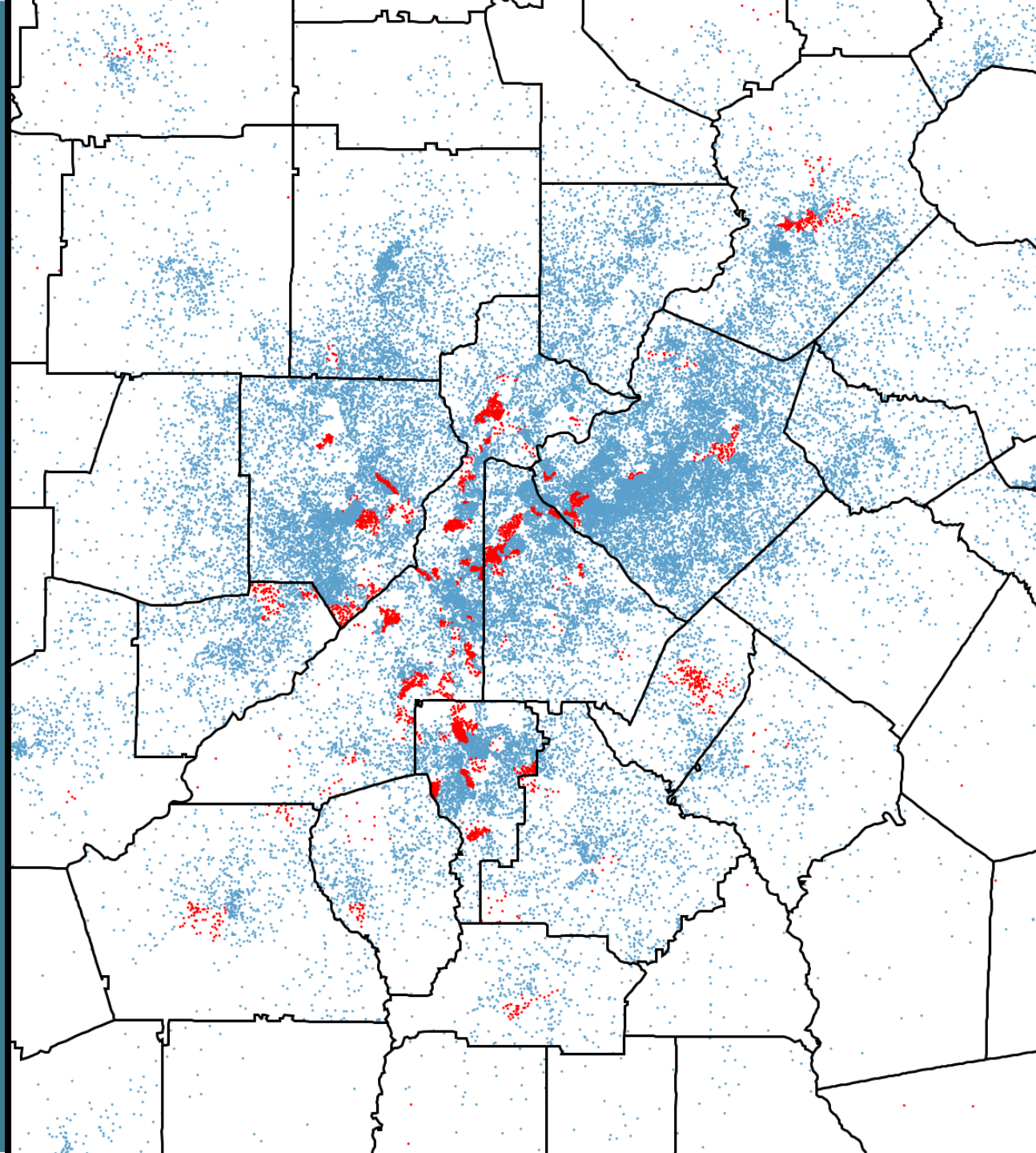
Red dot = Loss of 10 Persons



Change in Hispanic Populations, 2010-2020

Blue dot = Addition of 10 Persons

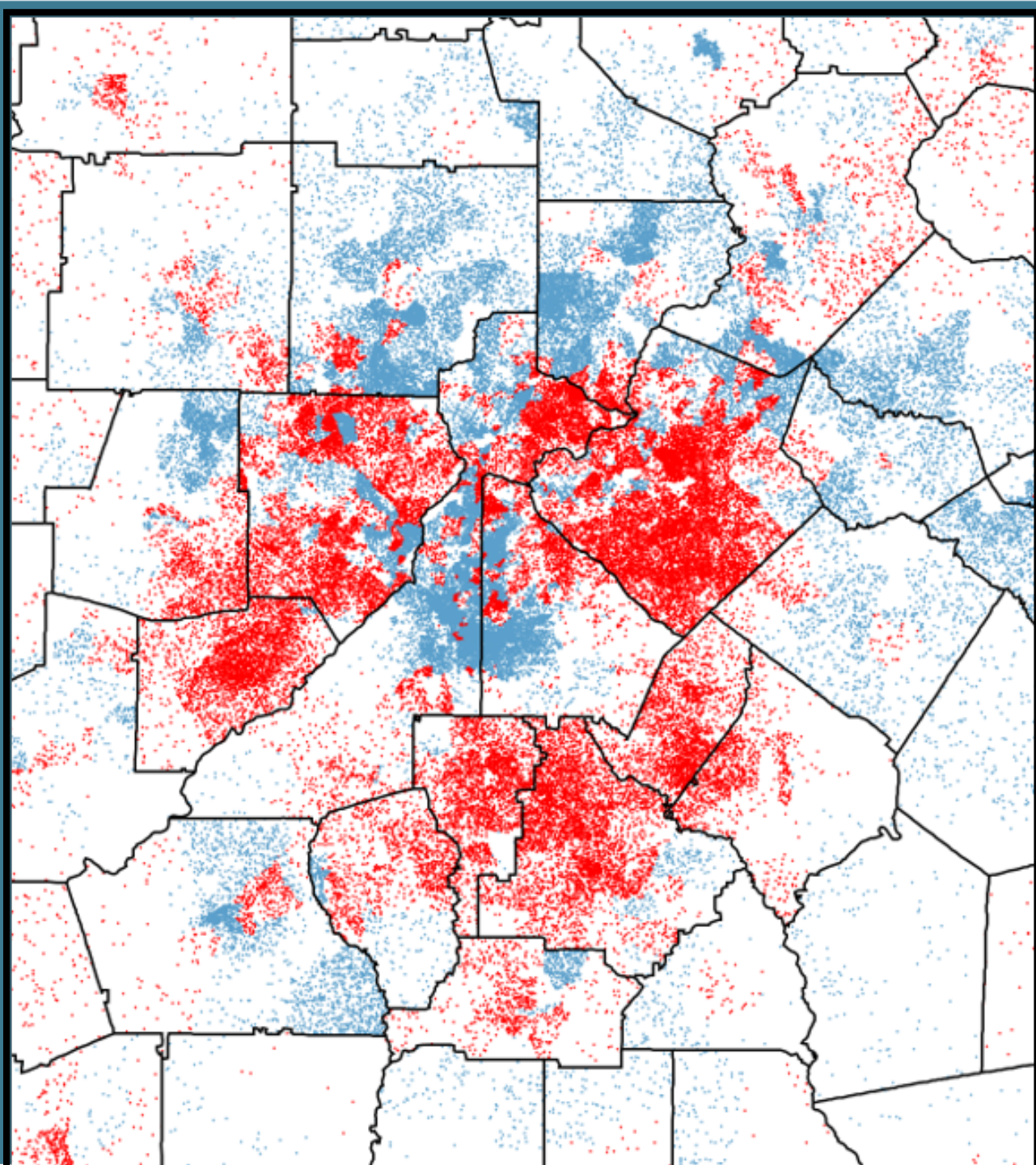
Red dot = Loss of 10 Persons



Change in White Populations, 2010-2020

Blue dot = Addition of 10 Persons

Red dot = Loss of 10 Persons



2021 Population Estimates

Now for Something Completely Different (almost)



The Highlights

- For the first time, the Atlanta Region's population exceeds 5 million residents (5,026,704).
- The 11-County Atlanta Region added 59,190 new residents between April 1, 2020 and April 1, 2021. This is the slowest annual population growth since 2014, which is to be expected given the economic downturn and pandemic.
- Our newest member, Forsyth County, had the greatest annual percent change in the region at 2.8 percent, followed by Cherokee (2.4%) and Henry (2.2%).
- Gwinnett County paced the region in total population added, up 13,180 new residents.

The Numbers

					Average	Average		
				2021	Annual	Annual	Average Annual	
	2000	2010	2020	ARC	Change	Change	Change 2020-2021	
	<u>Census</u>	<u>Census</u>	<u>Census</u>	<u>Estimate</u>	<u>00-10</u>	<u>10-20</u>	<u>Persons</u>	<u>Percent</u>
Atlanta Region	3,527,779	4,283,261	4,967,514	5,026,704	75,548	68,425	59,190	1.2
Cherokee	141,903	214,346	266,620	272,950	7,244	5,227	6,330	2.4
Clayton	236,517	259,424	297,595	300,085	2,291	3,817	2,490	0.8
Cobb	607,751	688,078	766,149	772,349	8,033	7,807	6,200	0.8
DeKalb	665,865	691,893	764,382	769,592	2,603	7,249	5,210	0.7
Douglas	92,174	132,403	144,237	146,237	4,023	1,183	2,000	1.4
Fayette	91,263	106,567	119,194	120,684	1,530	1,263	1,490	1.3
Forsyth	98,400	175,511	251,283	258,413	7,711	7,577	7,130	2.8
Fulton	816,006	920,581	1,066,710	1,075,970	10,458	14,613	9,260	0.9
Gwinnett	588,448	805,321	957,062	970,242	21,687	15,174	13,180	1.4
Henry	119,341	203,922	240,712	245,902	8,458	3,679	5,190	2.2
Rockdale	70,111	85,215	93,570	94,280	1,510	836	710	0.8
City of Atlanta	416,474	420,003	498,715	501,945	353	7,871	3,230	0.6
in DeKalb	29,775	28,292	40,020	40,280	-148	1,173	260	0.6
in Fulton	386,699	391,711	458,695	461,665	501	6,698	2,970	0.6

How Did We Do?

24,231: Difference
between ARC's 2020
Estimate and the Official
2020 Census population
of the 10-county region

0.51%: % Difference
between ARC's 2020
Estimate and the Official
2020 Census population of
the 10-county region