

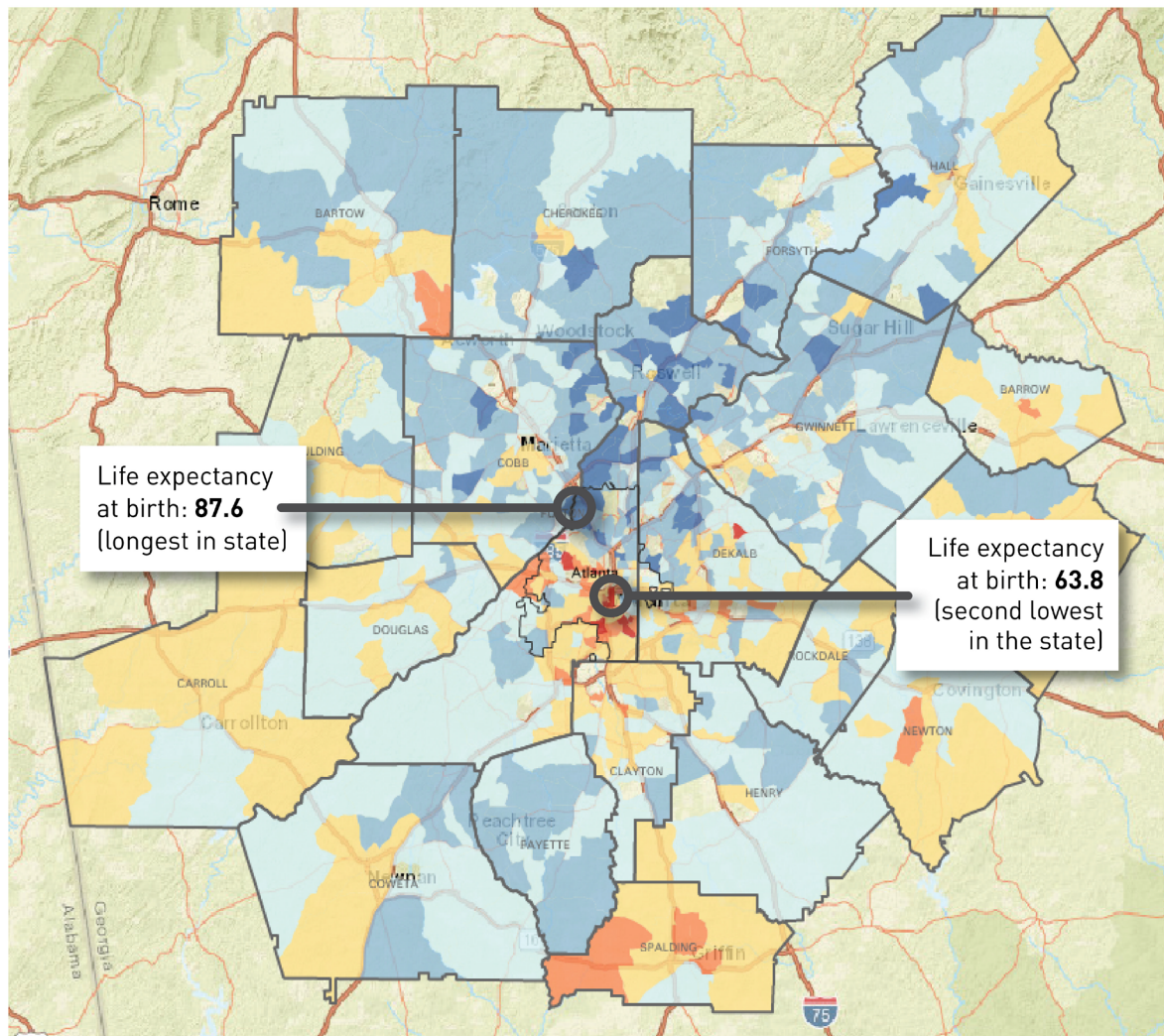


# Live Beyond Expectations Regional Strategic Plan Update

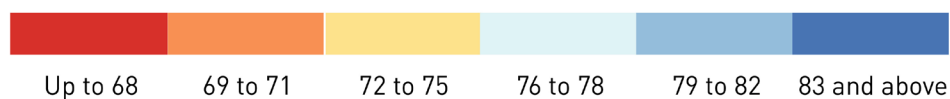
ARC Advisory Committee on  
Aging Meeting

September 22, 2021

Mary Blumberg &  
Katie Perumbeti



**Life Expectancy at Birth**



Source: U.S. Small-area Life Expectancy Estimates Project, 2010-2015

# Life Expectancy *Depends on* Where You Live

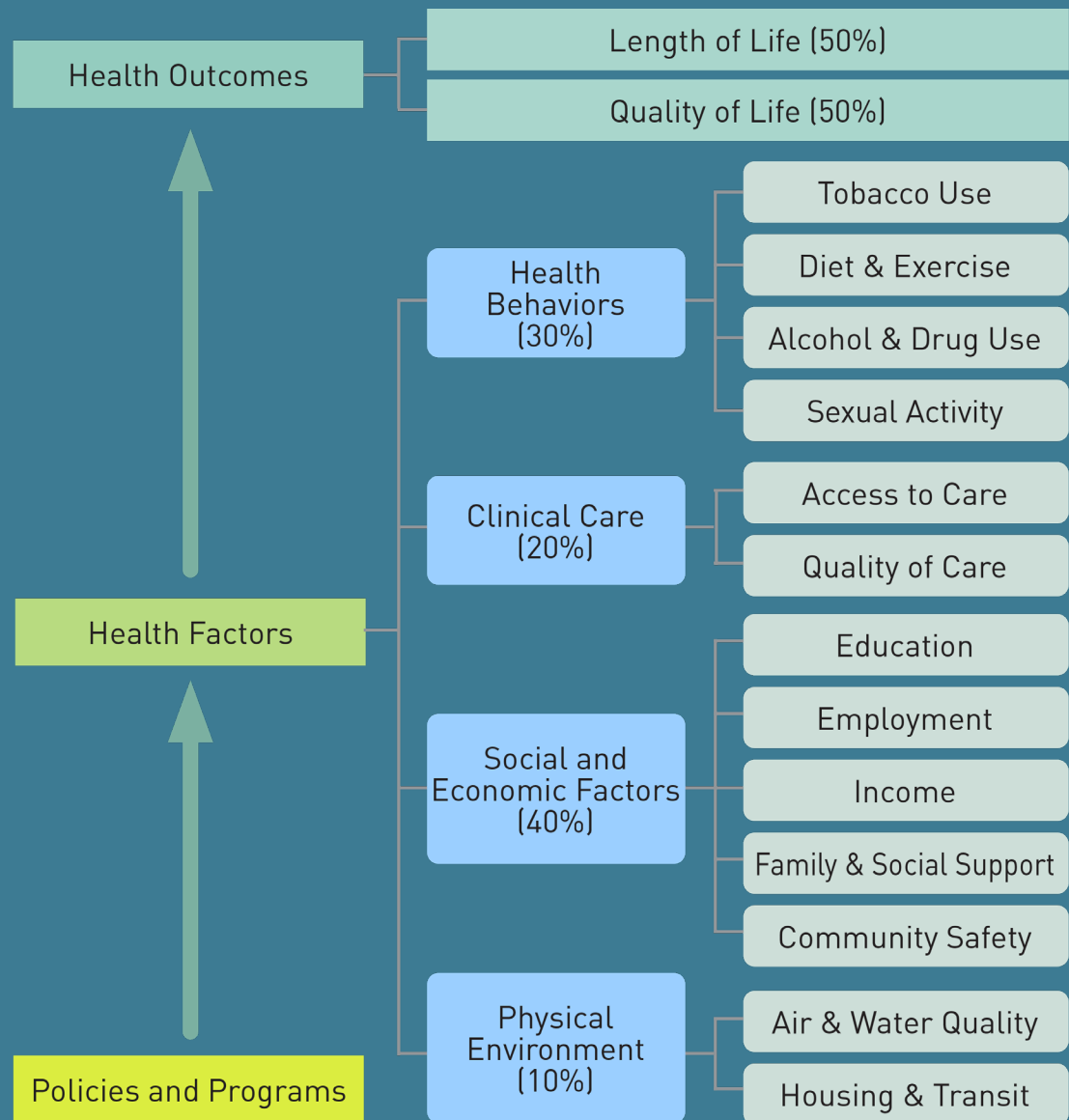
# The Goal:

## Live Beyond Expectations Regional Strategic Plan Framework 2020-2025



Helping people live longer, healthier lives in the Atlanta region

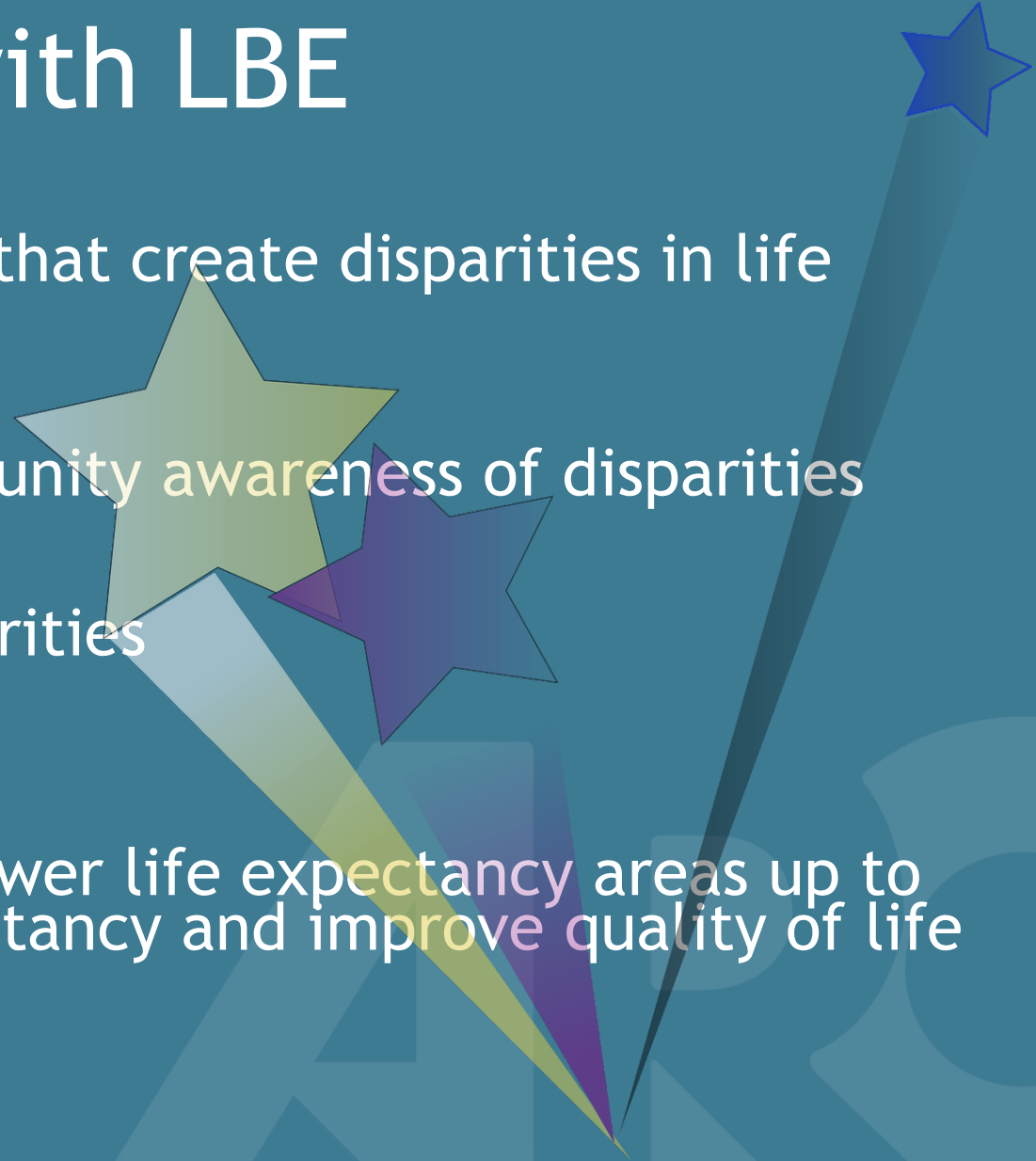
ARC, led by its Aging and Independence Services Group, will implement a strategic framework, designed to identify and address inequities that create disparities in life expectancy.



# County Health Rankings Model: Health Factors for How Well and Long We Live

# ARC's Aspirations with LBE

- Identify and reduce inequities that create disparities in life expectancy and quality of life
- Build organizational and community awareness of disparities
- Build capacity to address disparities
- **Long-term aspiration:** Bring lower life expectancy areas up to the regional average life expectancy and improve quality of life along the way



# Approaches to Reduce Disparities

- **Practice**: provide **services and programs** that address unmet needs
- **Policy**: work with governmental, philanthropic, educational, nonprofit, and business leaders to **improve or amend policies that create inequities** and **advance policies that promote equity**
- **Place**: focus on locations, within each county, **where residents experience the most inequity**

# Implementation To-Date

- Inventoried ARC work programs and alignment opportunities
- Researched factors impacting life expectancy and disparities between high and low life expectancy tracts
  - For county snapshot files, visit: <https://atlantaregional.org/aging-health/aging-health-planning/live-beyond-expectations-strategic-plan-2020-2025/>
- Mapped baseline of how ARC-funded services overlap with lower life expectancy areas
- Convened advisory committee of internal ARC staff and external partners (ongoing)

# Tracking Progress

County Snapshots - 5 Year Updates

Annual Evaluation - Annual Updates

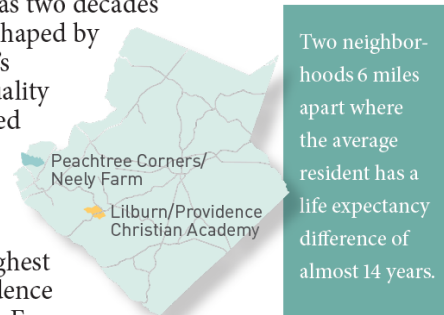
Provider Network Analysis - Annual Updates

# Life Expectancy in Gwinnett County

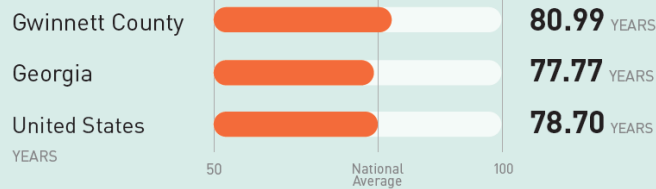
July 2021

Across metro Atlanta, lifespans vary by as much as two decades or more based on geography. Life expectancy is shaped by numerous complex factors beyond an individual's control, such as access to food, sidewalks, and quality education. Many of these factors can be influenced by our work at ARC and that of our partners.

This document provides a snapshot of select social and economic characteristics that vary between the census tracts with the lowest and highest life expectancy Gwinnett County: Lilburn/Providence Christian Academy and Peachtree Corners/Neely Farm, respectively. Consideration of these factors can inform strategies that help to extend lifespans and improve quality of life.

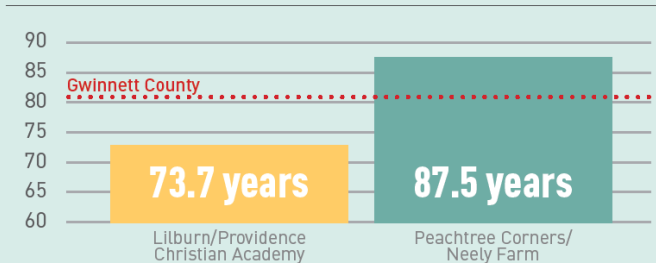


## Average Life Expectancy Comparisons



Data Source: Robert Wood Johnson Foundation Life Expectancy Tool, January 2020

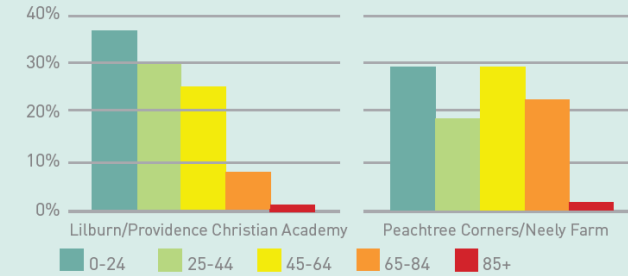
## Life Expectancy in Gwinnett



Data Source: U.S. Small-area Life Expectancy Estimates Project, 2010-2015

# Factors Affecting Life Expectancy in Gwinnett County

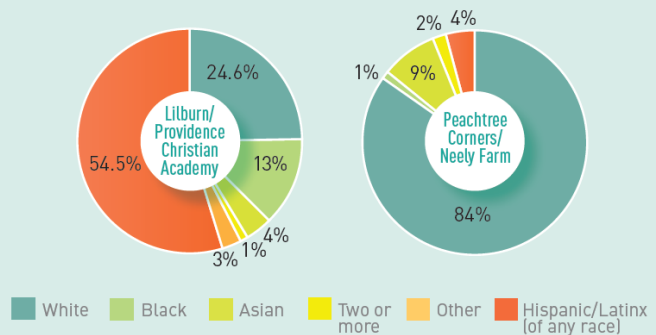
## Age Distribution



Two-thirds of residents of the Lilburn-Providence Christian Academy tract are under 45, while about half of residents of Peachtree Corners/Neely Farm are 45 or older. The metro Atlanta region as a whole is more evenly distributed.

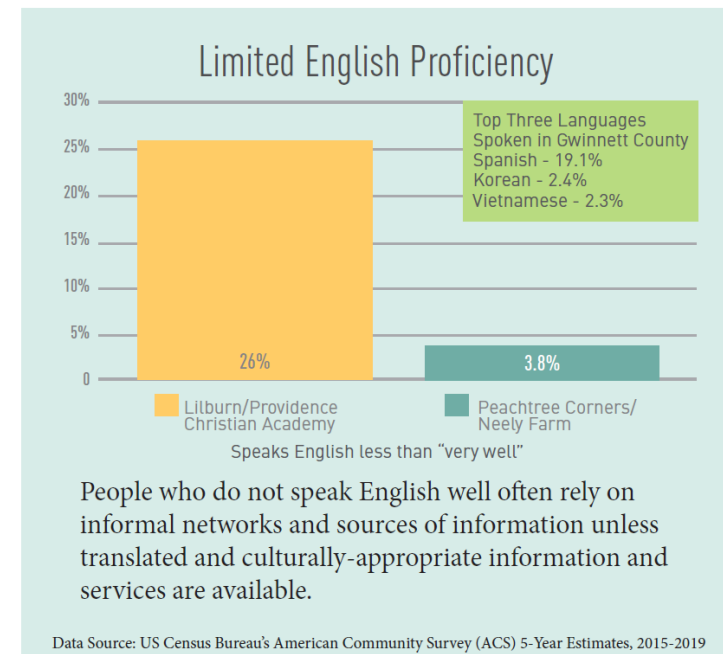
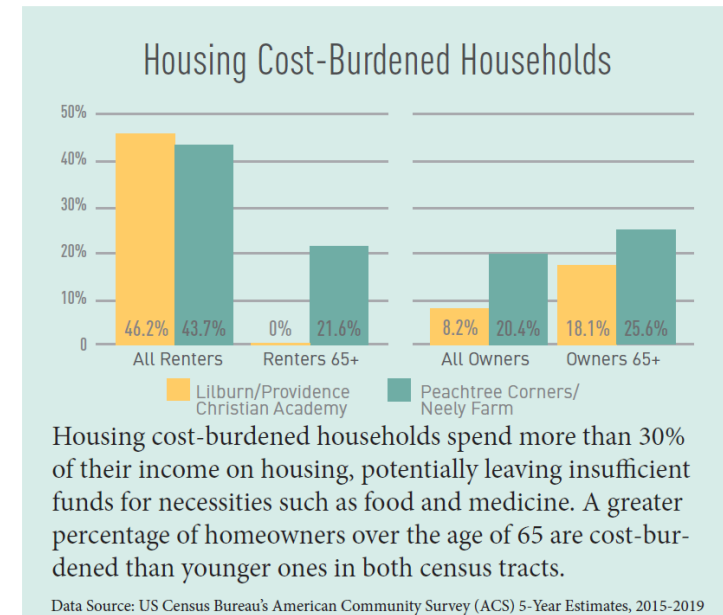
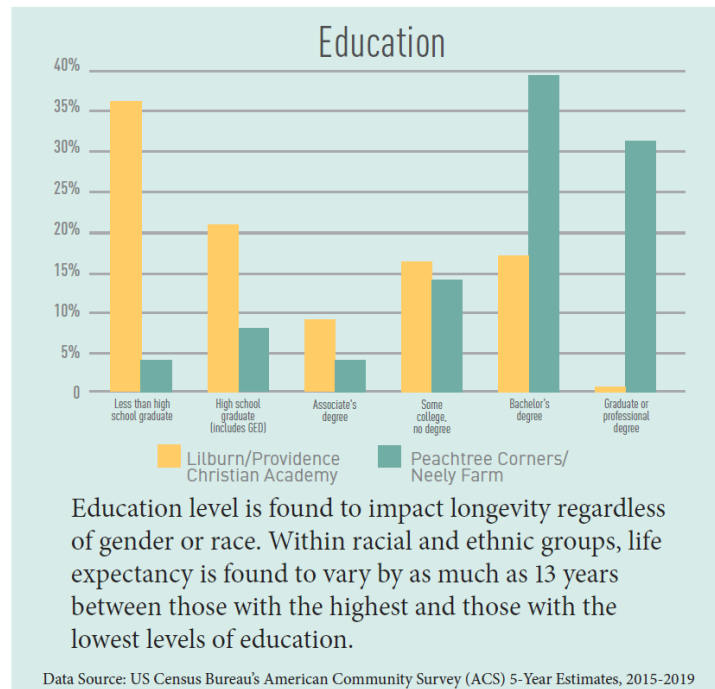
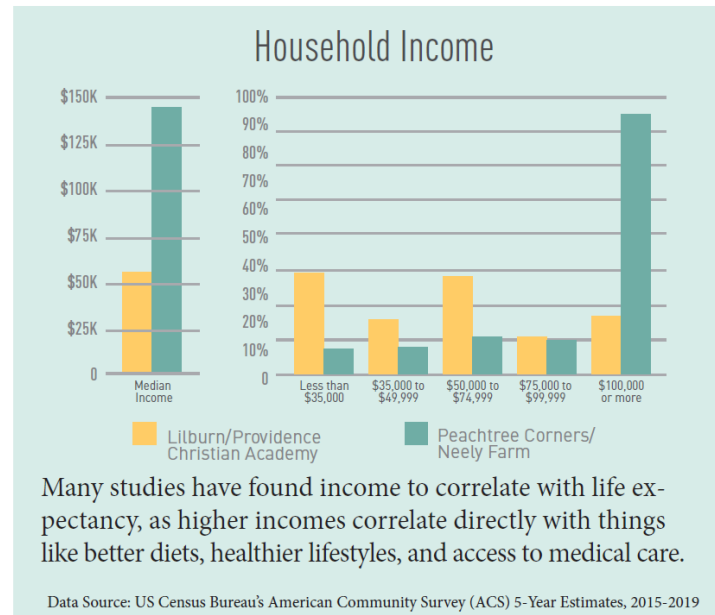
Data Source: US Census Bureau's American Community Survey (ACS) 5-Year Estimates, 2015-2019

## Race & Hispanic Origin

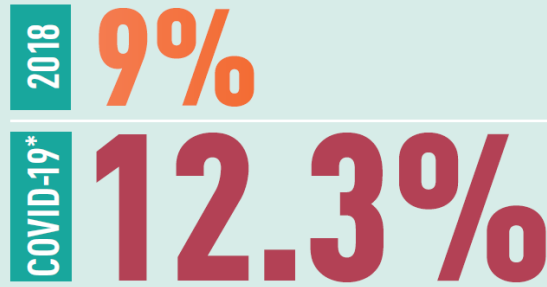


On average, with some minor exceptions, studies have shown that white individuals outlive other individuals at every age and level of education. Reasons for this discrepancy vary by individual, but in general, multiple factors are at play associated with systemic racism, including socioeconomic status and access to health care.

Data Source: US Census Bureau's American Community Survey (ACS) 5-Year Estimates, 2015-2019



## Percent of Gwinnett County Food Insecure

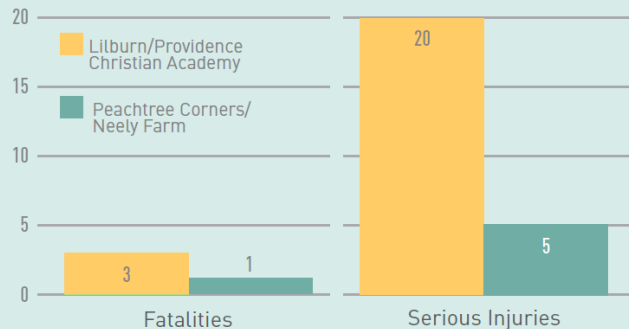


\*projected rise due to COVID

Food insecurity is limited or uncertain access to enough food. A lack of access to healthy food is linked to a greater likelihood of developing chronic conditions such as diabetes, obesity, and cardiovascular disease—which have been shown to significantly affect life expectancy.

Data Source: Feeding America, Map the Meal Gap, 2018

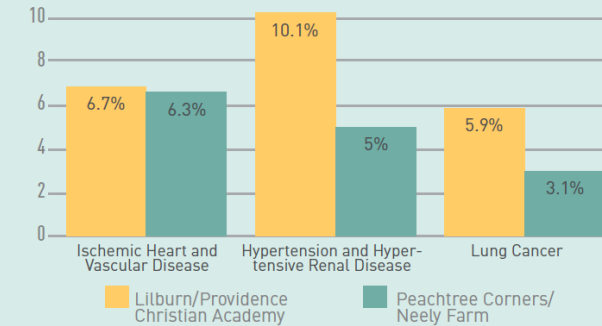
## Crashes Involving Motor Vehicles



Research has found a disproportionate number of motor-vehicle-related pedestrian injuries and deaths take place in the nation's less pedestrian-friendly neighborhoods.

Data Source: Georgia Department of Transportation, Georgia Crash Data Portal, 2013-2019

## Top Causes of Premature Death



Premature deaths due to these causes can be prevented through interventions in areas such as transportation, access to preventative care, disease management, and mental health services.

Data Source: Georgia OASIS, Mortality Mapping Tool, 2015-2019

## Addressing the Problem

By working together across the region, we can address metro Atlanta's life expectancy disparities. The ingenuity and resources are here. ARC invites all interested individuals and organizations to join with us and our communities to ensure that the Atlanta region is a place where people of all ages, abilities, and incomes can live high-quality lives, regardless of location.

We are focusing on:

- Place** Concentrate on locations where residents experience the most inequity
- Policy** Work with governmental, philanthropic, educational, nonprofit, and business leaders to improve or amend policies that create inequities and advance policies that promote equity
- Practice** Provide services and programs that address unmet needs



For more information, please contact [info@empowerline.org](mailto:info@empowerline.org)

# Tracking Outcomes

## Life expectancy years

2017	2018
79.6	79.8



Source: County Health Rankings

## Quality of life adults reporting good (or better) health

2016	2017	2018
84.5%	84.0%	83.4%



Source: County Health Rankings

## Financial stability adults unable to afford a \$400 emergency expense

2016	2017	2018
14.1%	14.0%	13.1%



Source: ARC's Metro Atlanta Speaks Survey

## Healthcare access people with health insurance

2016	2017	2018
84.0%	85.1%	86.3%



Source: American Community  
Survey 5-Year Estimates



# Annual Process Evaluation

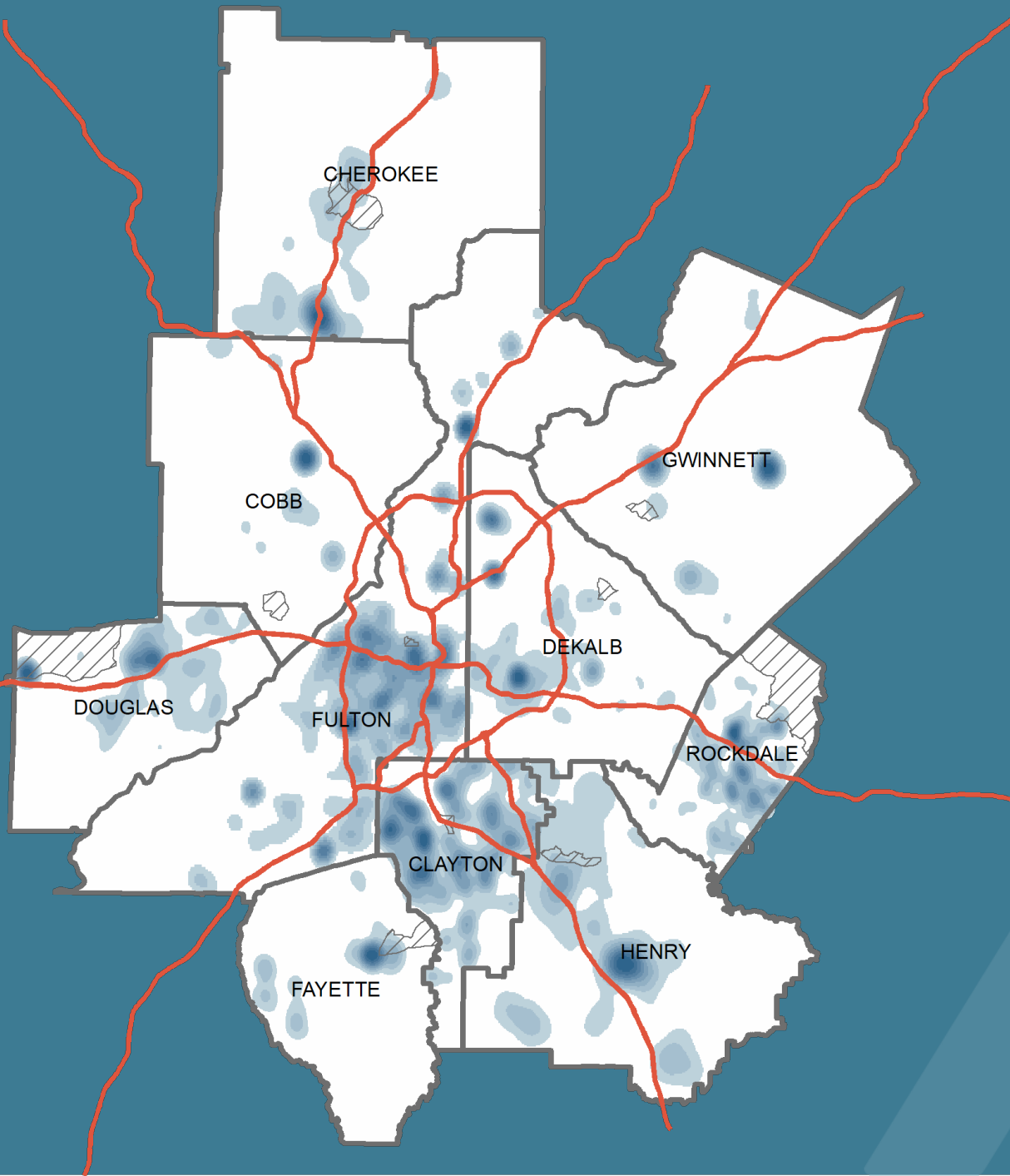
- Implementation task milestones completed
- Output measures related to strategies by location
  - Specific measures TBD
  - Examples:
    - # people in lowest LE tract engaged
    - New resources developed
    - Policy and system changes
      - Zoning reform
      - Funding formula changes
      - Medicaid expansion
      - New public transportation option

# Provider Network Services

- Determine:
  - Where current clients tend to live
  - Where current service units tend to cluster
- Use this information to:
  - Increase awareness of disparities
  - Build network capacity to address disparities
  - Improve outreach to communities
- Goal: ensure areas with lowest life expectancies and greatest health disparities are aware of and/or receiving services

# Mapping Provider Network Services

-  Where Provider Network clients tend to live in each county
-  Census tracts with the lowest life expectancy in each county



Data Source: DDS Unduplicated Congregate Meal Clients (FY20), Transportation Clients (FY20), Material Aid Clients (FY21), Respite Clients (FY21), Personal Care and Homemaker Clients (FY21), and Home Delivered Meals Clients (FY21)

# Next Steps

- External Partners Collaboration
  - Inventory partners and providers
  - Identify opportunities to collaborate
- Community Engagement
  - Regional outreach and communications
  - Place-based engagement, focusing on lowest life expectancy areas

## Questions? Ideas? Contact us:

- Mary: [mblumberg@atlantaregional.org](mailto:mblumberg@atlantaregional.org)
- Katie: [kperumbeti@atlantaregional.org](mailto:kperumbeti@atlantaregional.org)